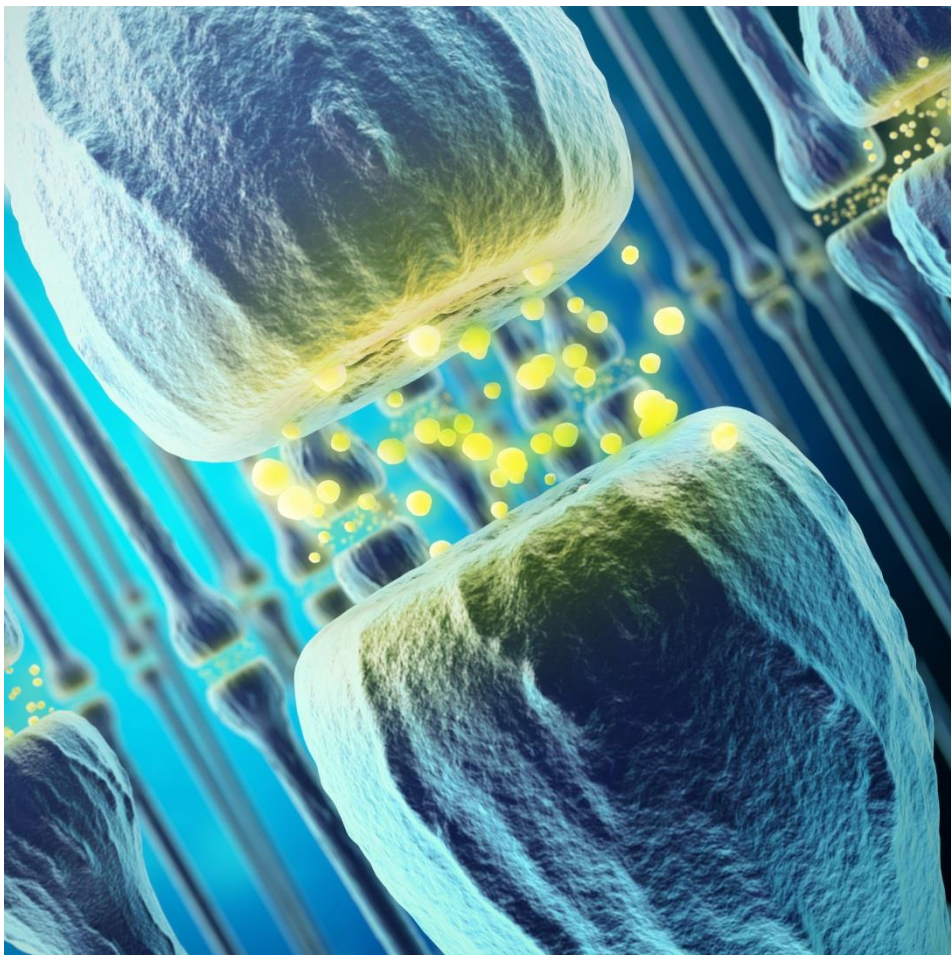




Annual Report

Research Activity 2018



Division of Clinical Neuroscience
University of Oslo and Oslo University Hospital





Contents

Oslo University Hospital and the University of Oslo	4
From Division Director Eva Bjørstad	4
Division of Clinical Neuroscience (NVR) Organizational Chart	5

Department of Physical Medicine and Rehabilitation

Rehabilitation after trauma	6
Group Leader: Nada Andelic	
Painful musculoskeletal disorders	10
Group Leader: Cecilie Røe	

Department of Refractory Epilepsy – National Centre for Epilepsy

Complex epilepsy	11
Group Leader: Morten Lossius	

Department for Neurosurgery

Neurovascular-Hydrocephalus Research Group	15
Group Leader: Per Kristian Eide	
Oslo Neurosurgical Outcome Study Group (ONOSG)	18
Group Leader: Eirik Helseth and Torstein Meling	
Vilhelm Magnus Laboratory for Neurosurgical Research	21
Group Leader: Iver A. Langmoen	
Functional Neurosurgery Group	25
Group Leader: Pål Gunnar Larsson	

Department of Neurology

Movement Disorders	28
Group Leader: Mathias Toft	
Cerebrovascular diseases	31
Group Leader: Mona Skjelland	





Epilepsy Research Group – Department of Neurology.....	30
Group Leader: Erik Taubøll	
Multiple Sclerosis (MS)	34
Group Leader: Elisabeth Gulowsen Celius	
NEMU – Neurological and musculoskeletal pain and genetics.....	41
Group Leader: John-Anker Zwart	
Brain plasticity and neuropsychiatry	43
Group Leader: Torbjørn Elvsåshagen	
Cognitive Health in Brain Disorders (CHBD)	46
Group Leader: Ira Haraldsen	
 Department of Neurohabilitation	
Intellectual disability and neurohabilitation.....	49
Group Leader: Bjørnar Hassel	
 Sunnaas Rehabilitation Hospital	
Specialized medical rehabilitation – Sunnaas Rehabilitation Hospital.....	50
Group Leader: Johan Stanghelle	
 Publication list NVR research groups 2018	 53





Oslo University Hospital and the University of Oslo

Oslo University Hospital (OUH) is Norway's largest hospital with over 20 000 employees and a budget of 20 billion NOK. The Hospital has a local function for parts of Oslo's population. It has a regional function for the inhabitants in the South-Eastern Norway Regional Health Authority, and it also has a large number of national functions. The Hospital is responsible for the majority of medical research and education of health personnel in Norway.

The University of Oslo (UiO) is Norway's largest research and educational institution with 28 000 students and 7 000 employees. Professional breadth and internationally recognized research environments make UiO an important contributor to society. The Faculty of Medicine was established in 1814 and works for progressive education, research and dissemination for the patients' and society's best interests.

From Division Director Eva Bjørstad

Being the largest hospital in Norway, Oslo University Hospital provides highly specialized health care services to the citizens of Oslo and the Southeast health region. In addition, the Hospital has a nationwide responsibility for a number of national and multi-regional assignments. The Division of Clinical Neuroscience encompasses the disciplines of neurology, neurosurgery, physical medicine and rehabilitation, neuro habilitation and complex epilepsy. The proximity to patients and their medical issues are the cornerstones for the research conducted at our Hospital, and the research is aimed at improving patient care. High ethical standards ensure the confidentiality and our goal is to continuously improve diagnostics, treatment and management for all our patients.

Research activity at the Division of Clinical Neuroscience

The Division's research activity is organized into 16 different research groups covering a broad range of basic, clinical and epidemiological research with an overall aim to improve patient care with emphasis on diagnostic, therapeutic and preventive measures. Most group leaders have a combined position at Oslo University Hospital and the University of Oslo. In total the Division has 18 Professors, 4 Associate Professors, several postdoctoral fellowships and PhD students, administrative staff and technical staff. The Division has an advisory research board that in 2018 consisted of: Professor and Head of Research John-Anker Zwart, Division Director Eva Bjørstad, Senior Consultant Morten Lossius, Professor and Senior Consultant Eirik Helseth, Senior Consultant Mona Skjelland, Senior Consultant Nada Andelic, Quality and healthcare adviser Hege Hammer and Administrative Manager Agnete Hager. In 2018 there were in total 217 registered peer reviewed publications and 10 PhD dissertations.

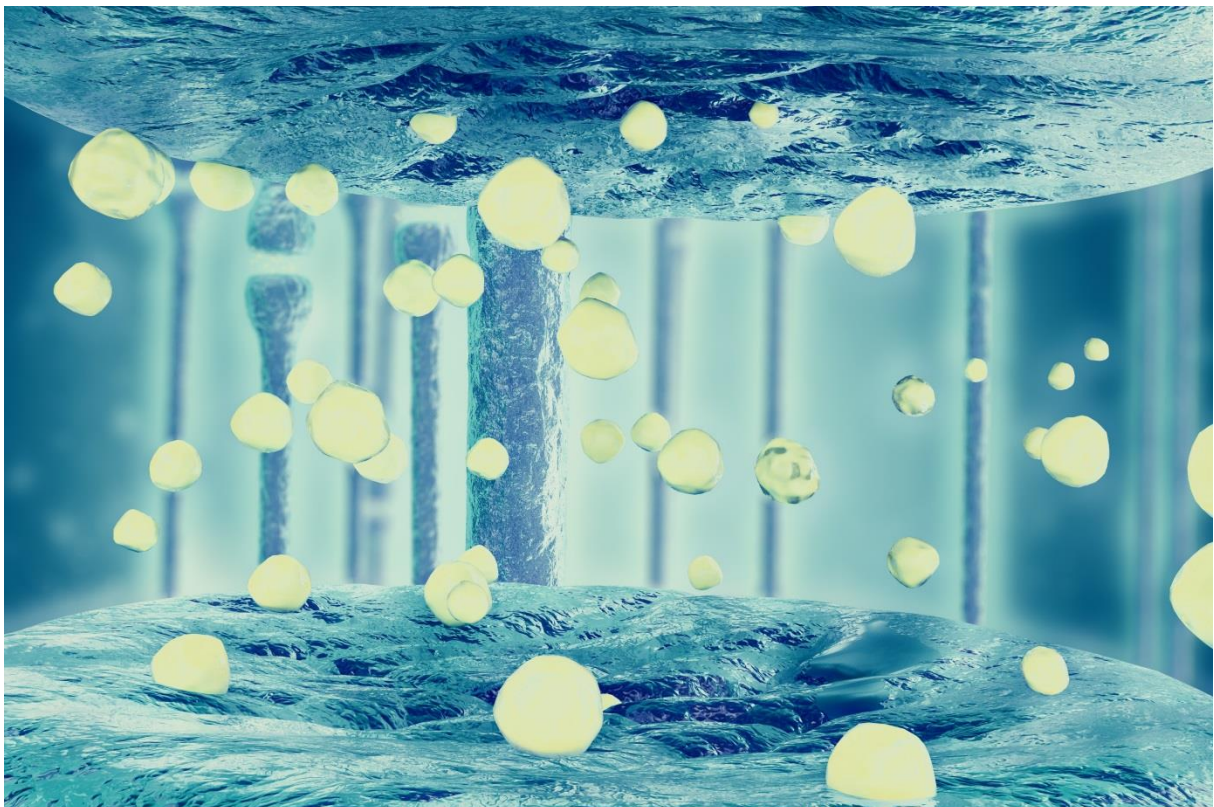
Eva Bjørstad



Division of Clinical Neuroscience (NVR) Organizational Chart



*UiO employees



Rehabilitation after trauma



Group Leader

Nada Andelic, MD/PhD, Researcher, Dept. of Nursing Science, UiO
(nada.andelic@medisin.uio.no) / OUH (nadand@ous-hf.no)

Group members

- Cecilie Røe, Professor, MD/PhD, UiO
- Erik Bautz-Holter, Professor emeritus, UiO
- Helene Lundgaard Sjøberg, PhD, Senior researcher, OUH
- Unni Sveen, Professor, PhD, OUH
- Tonje Haug Nordenmark, PhD, Postdoc, OUH
- Marit V. Forslund, PhD, postdoc, OUH
- Tanja Karic, PhD, OUH
- Torgeir Hellstrøm, PhD, OUH
- Ingerid Kleffegaard, PhD fellow, OUH
- Mari S. Rasmussen, PhD fellow, UiO
- Emilie I. Howe, Cand Psych, PhD fellow, UiO
- Silje Fure, PhD fellow, UiO
- Elin Western, PhD fellow, UiO
- Ida Maria Borgen Henriksen, PhD fellow, UiO
- Cathrine Buaas Tverdal, PhD fellow, UiO

Associated group members

- Line Preede, PhD fellow, UIO

Research profile and aims

The research group generates knowledge about the mechanisms and consequences of trauma, patient care, trends and challenges in treatment and rehabilitation including the patients' healthcare needs. The main research focus is traumatic injuries including traumatic brain injury (TBIs), and aneurysmal subarachnoid hemorrhage (aSAH). The research conducted by this group is multidisciplinary and collaborative, where collaboration between genetics, intensive medicine, neurosurgery, neuroradiology, neuropsychology and rehabilitation has been established over the last 10 years. By combining the perspectives and methods of basal, clinical and health care service research, we may provide unique knowledge on the consequences of injuries, how to organize effective patient care and improve the functional outcomes after injuries.

The main aims are:

1. To better understand the mechanisms, course and consequences of TBI and multiple traumas by using translational research strategy.
2. To develop and build evidence based efficient protocols for the rehabilitation implementation.
3. To strengthen existing and initiate new national and international research collaborations.



Main ongoing projects

- *Center-TBI (Collaborative European NeuroTrauma Effectiveness Research in TBI)*. Principal investigator at the Oslo University Hospital Study Site of Center-TBI Nada Andelic
- *The course of functional recovery after moderate-to-severe TBI (5, 10 and 20 years after injury)*. In collaboration with Sunnaas Rehabilitation hospital. Principal investigator Nada Andelic, Researchers: Cecilie Røe, Torgeir Hellstrøm, Emilie I. Howe, Marit V. Forslund
- *The family as a resource for improved patient and family functioning after traumatic brain injury*. A randomized controlled trial of a family centered intervention. Principal investigator Helene L. Sjøberg, PhD fellow Mari S. Rasmussen
- *The effect evaluation of combined cognitive and vocational interventions after mild-to-moderate traumatic brain injury: a randomized controlled trial and qualitative process evaluation*. Principal Investigator: Nada Andelic, PhD fellows: Emile I. Howe and Silje Fure. Postdoc Torgeir Hellstrøm
- *Traumatic brain injury; needs and treatment options in the chronic phase. A randomized controlled community-based intervention*. Principal investigator: Cecilie Røe, PhD fellow Ida M. Borgen Henriksen, postdocs: Marit V. Forslund, Solveig L. Hauger, Ingerid Kleffelgaard
- *OSU6162 in the treatment of fatigue and other neuropsychological sequelae after aneurysmal subarachnoidal hemorrhage - a double-blind, randomised, placebo-controlled study*. Principal investigators Angelika Sorteberg and Tonje Haug Nordenmark. PhD fellow Elin Western
- *Rehabilitation needs after trauma*. In collaboration with the National Trauma Register and University Hospital of North Norway and CHARM. Principal investigator Nada Andelic, PhD fellows to be hired

Other projects

- *Development of persistent fatigue after moderate-to-severe TBI*. In collaboration with Sunnaas Rehabilitation Hospital. Principal investigator Marianne Løvstad, PhD fellow Daniel Løke
- *Global functioning and quality of life 5 and 10 years after aneurysmal subarachnoid hemorrhage*. Principal investigator Tonje Haug Nordenmark, researcher Tanja Karic
- *Transitions in rehabilitation: Biographical reconstruction, experiential knowledge and professional expertise*. In collaboration with OsloMet. Investigators from OUH Helene L. Sjøberg and Unni Sveen
- *Effect of adapted physical activity and goal-setting on physical and mental health*. In collaboration with Beitostølen Health Sport Center. Principal investigators Cecilie Røe and Erik-Bautz Holter, fellow Line Preede
- *Pediatric traumatic brain injury: A prospective study investigating incidence, outcomes and unmet treatment needs 2 years post-injury*. In collaboration with Children Dept. Principal investigators Trond Diseth and Mia Myhre. PhD fellow Hilde M. Dahl
- *Acute treatment of traumatic brain injury at Oslo University Hospital. Profile of patient population, hospital resource use and hospital discharge*. In collaboration with Dept. of Neurosurgery. Principal investigator Eirik Helseth, PhD fellow Cathrine Buas Tverdal



Most important national and international collaborators

National

- Oslo Traumatic Brain Injury Outcome and Rehabilitation Research Network (OBIOR-research network)
- Hospitals in the South-East Region, including Sunnaas Rehabilitation Hospital
- The Norwegian University Hospitals
- OsloMet
- Work Research Institute (AFI)
- Norwegian Labor and Welfare Administration, Oslo
- NAV, Dept. of vocational rehabilitation
- Universities of Oslo, Bergen, Trondheim and Tromsø
- Helsam/Charm

International

- Karolinska, Uppsala, Umeå and Salgrenska University Hospitals, Sweden
- Copenhagen University Hospital and Hammel Rehabilitation and Research Centre, Denmark
- Virginia Commonwealth University, Richmond, US
- BioCruces Health Research Institute, Spain
- University of California, San Diego, CA, USA
- University of Gottingen, Germany
- Hannover Medical School, Germany
- CENTER-TBI collaborators across the European hospitals/universities ((particularly Finland, UK, France, Slovakia and Germany)

Funding

- European Union's Seventh Framework Programme for Research and Development
- Norwegian Research Council
- Heath Authority South-East Region
- Norwegian Extra Foundation for Health and Rehabilitation
- University of Oslo
- Oslo University Hospital

Scientific production of the research group in 2018

Dissertations

PhD thesis

Torgeir Hellstrøm:

“Functional impairment, cognition, and MRI changes following mild traumatic brain injury”

Faculty of Medicine, UiO

Ingerid Kleffelgaard:

“Vestibular rehabilitation for dizziness and balance problems after mild-to-moderate traumatic brain injury”

Faculty of Medicine, UiO

Master thesis

Cathrine Buaas Tverdal:

“Care transition after traumatic brain injury. Discharge process from trauma hospital; patient experience and satisfaction with care transition”

Faculty of Medicine, UiO





Øyvor Haugsbakk Talåsen:

«Det handler om å gi folk en sjanse». En kvalitativ studie om hvordan personer med traumatisk hodeskade opplever arbeidslivet ti år etter skaden

Collaboration between OUH and Oslo Met

Peer reviewed original research articles: 15

Other publications: 10

Selected publications:

Kleffelgaard I, Soberg HL, Tamber AL, Bruusgaard KA, Pripp AH, Sandhaug M, Langhammer B (2018)
“The effects of vestibular rehabilitation on dizziness and balance problems in patients after traumatic brain injury: a randomized controlled trial”

Clin Rehabil, 33 (1), 74-84

DOI 10.1177/0269215518791274, PubMed 30056743.

Tverdal CB, Howe EI, Røe C, Helseth E, Lu J, Tenovuo O, Andelic N (2018)

“Traumatic brain injury: Patient experience and satisfaction with discharge from trauma hospital”

J Rehabil Med, 50 (6), 505-513. DOI 10.2340/16501977-2332, PubMed 29620136.

Howe EI, Andelic N, Perrin PB, Røe C, Sigurdardottir S, Arango-Lasprilla JC, Lu J, Løvstad M, Forslund MV (2018)

“Employment Probability Trajectories Up To 10 Years After Moderate-To-Severe Traumatic Brain Injury”

Front Neurol, 9, 1051. DOI 10.3389/fneur.2018.01051, PubMed 30568630,



Painful musculoskeletal disorders



Group Leader

Cecilie Røe, Professor, Head of Dept of Physical Medicine and Rehabilitation,
UiO (cecilie.roe@medisin.uio.no)/ OUH (cecilie.roe@ous-hf.no)

Group Members

- Erik Bautz-Holter, Professor emeritus, UiO
- Siri Bjorland, PhD student, UiO
- Jens Ivar Brox, Professor, UiO
- Kaia Beck Engebretsen, PT, PhD, OUH
- Marte Heide, PhD student, UIO
- Aasne Hoksrud, PhD, OUH
- Marianne Bakke Johnsen, PhD, OUH
- Niels-Gunnar Juel, MD, Dr. Philos, OUH
- Synnøve Kvalheim, PhD, OUH
- Elisabeth Kvalvaag, PhD, OUH
- Kjersti Myhre, PhD, OUH
- Marianne Mørk, PhD student, OUH
- Line Preede, PhD student, UiO
- Elina Schistad, PhD, postdoctoral student Pain Medicine, OUH
- Helene Skaara, MSc, OUH
- Sigrid Skatteboe, PhD, OUH
- Mirad Taso, PhD student, OUH
- Thy Vanem, PhD student, OUH

Research profile and aims

The research unit generates knowledge regarding diagnostics, treatment and rehabilitation of painful musculoskeletal conditions. The main focus is on neck, back and shoulder conditions. The research is multidisciplinary, and collaboration with basal, clinical and health care service milieus established. Based on the framework of the International Classification of Functioning, Disability and Health (ICF) and the biopsychosocial model, interaction between the genetic and other basal disease mechanisms with psychosocial, personal and environmental factors are studied regarding the course of pain, functioning and participation. Furthermore, developing and evaluating treatment models in prospective and randomized studies, aiming to improve functioning and return to work are focus areas.

The main aims are:

- To understand the mechanisms, course and consequences of painful musculoskeletal conditions.
- To develop and evaluate treatment models for painful musculoskeletal conditions.



Ongoing projects

- A randomized controlled study of surgical versus non-surgical treatment for cervical radiculopathy. Principal investigator Jens Ivar Brox, PhD fellow Mirad Taso
- The effectiveness of radial extracorporeal shockwave therapy, standardized exercise program or usual care for patients with plantar fasciopathy. Study protocol for a double-blind, randomized, sham-controlled trial. Principal investigator Aasne Fenne Hoksrud, PhD fellow Marianne Mørk and Marte Heide
- The long-term course of low back pain and radiculopathy. Principal investigators Cecilie Røe and Johannes Gjerstad, National Institute of Occupational health. PhD fellow Siri Bjorland
- Reliability of Modic changes. Principal investigator Elina Schistad
- Improving functioning and participation among persons with physical disabilities. Principal investigator Cecilie Røe. PhD student Line Preede
- Clinical course and prognostic factors for shoulder pain patients in primary and specialized care. Principal investigator Kaia Engebretsen
- Antibiotic treatment in patients with chronic low back pain and Modic Changes: randomized trial. Conducted by FORMI. Principal investigator in the research group Jens Ivar Brox and Elina Schistad
- Development of a minimum reporting set for rehabilitation services, Principal investigator Cecilie Røe
- FINITE - Finnish-Norwegian Tennis Elbow Study. Principal investigator, Aasne Fenne Hoksrud, Collaborators Jens Ivar Brox, Stein Tyrdal, Helene Skaara, Cecilie Røe

Most important national and international collaborators

National

- Dept. of Orthopaedics, OUH
- Forsknings og formidlingsenheten for muskelskjelett helse, FORMI
- Dept. of Physical medicine and Rehabilitation, St Olavs Hospital
- Dept. of Physical medicine and Rehabilitation, University Hospital of North Norway
- Dept. of Physical medicine and Rehabilitation, Haukeland University Hospital

International

- Tuomas Lähdeoja, Helsinki University Central Hospital
- Juan Lu, Paul Perrin, Virginia Commonwealth University, US
- Christoph Gutenbrunner, Hannover Medical School, Department of Rehabilitation Medicine, Hannover, Germany





Scientific production of the research group in 2018

Peer reviewed original research articles: 10

Doctoral dissertation:

Sigrid Skatteboe: *“Outcome expectations in patients with persistent neck, back and shoulder complaints”*
16 March 2018

Elisabeth Kvalvaag: *“Subacromial Pain Syndrome. Treatment, diagnostic imaging and predictors of outcome”*
23 April 2018

Niels Gunnar Juel: *“Shoulder and hand diagnoses, stiffness and associated disability of the upper extremities in patients with type 1 diabetes for more than 45 years. The Dialog study”*
21 June 2018

Selected publications:

Juel NG, Brox JI, Hellund JC, Merckoll E, Holte KB, Berg TJ (2018)
“Radiological glenohumeral osteoarthritis in long-term type 1 diabetes. Prevalence and reliability of three classification systems. The Dialog shoulder study”
Skeletal Radiol, 47 (9), 1245-1251

Schistad EI, Bjorland S, Røe C, Gjerstad J, Vetti N, Myhre K, Espeland A (2018)
“Five-year development of lumbar disc degeneration-a prospective study”
Skeletal Radiol (in press)

Enger M, Skjaker SA, Melhuus K, Nordsletten L, Pripp AH, Moosmayer S, Brox JI (2018)
“Shoulder injuries from birth to old age: A 1-year prospective study of 3031 shoulder injuries in an urban population”
Injury, 49 (7), 1324-1329

Funding

- The Research Council of Norway
- South-Eastern Norway Regional Health Authority
- Sofies Minde Ortopedi
- Oslo University Hospital (interaction means)



Complex epilepsy



Group Leader

Morten I. Lossius, Consultant neurologist, National Centre for Epilepsy, OUH (mortenl@ous-hf.no) and Professor, UiO (morten.lossius@medisin.uio.no)

Group Members

- Marit Bjørnvold, MD/PhD, SSE
- Cecilie Johannessen Landmark, MSc/PhD, SSE and OsloMET
- Kristin Alfstad, MD/PhD, SSE
- Karl Otto Nakken, MD/PhD, SSE
- Magnhild Kverneland, MSc, SSE and UiO
- Kari Modalsli Aaberg, MD/PhD, SSE and UiO
- Hilde Karterud, Cand.san/PhD, SSE and UiO
- Antonia Villagran, MD, SSE and UiO
- Torleiv Svendsen, MD, SSE and UiO
- Oliver Henning, MD, SSE
- Sigrid Pedersen, MSc, SSE
- Erik sætre, MD, PhD, SSE
- Annette Holth Skogan Clin.Neuro.Psych/PhD, SSE
- Ellen Molteberg, MD, SSE and UiO

Associated group members

- Anette Huuse Farmen, MD, Innlandet Hospital and UiO
- Marte Syvertsen, MD, Vestre Viken and UiO
- Kaja Kristine Selmer, MD/PhD, OUS and UiO

Research profile and aims

Clinical research in patients with difficult-to-treat epilepsy, with particular focus on:

- Characterization of different epilepsy syndromes (genotype/phenotype)
- Clinical pharmacology of antiepileptic drugs
- Different diagnostic and treatment options; EEG, pharmacotherapy, surgery, VNS, diets
- Psychosocial, psychiatric and neurocognitive aspects
- Psychogenic non-epileptic seizures

Ongoing projects

PhD candidates in the UiO PhD program:

- Kari Modalsli Aaberg: *Epilepsy in young children*. Supervisor: Camilla Stoltenberg. Co-supervisors: Pål Suren, Per Magnus, Richard Chin, and Morten I. Lossius [Dissertation June 04, 2018](#)
- Magnhild Kverneland: *Effect of modified Atkin's diet in adult patients with pharmacoresistant focal epilepsy. A randomized controlled study*. Supervisor: Karl Otto Nakken. Co-supervisor: Erik Taubøll
- Antonia Villagran. *Psychiatric comorbidity in patients with psychogenic non-epileptic seizures (PNES)*. Supervisor: Morten I. Lossius. Co-supervisor: Roderick Duncan
- Torleiv Svendsen: *Tolerability and efficacy of new antiepileptic drugs*. Supervisor: Cecilie Johannessen Landmark. Co-supervisors: Ole Morten Rønning and Morten I. Lossius
- Sigrid Pedersen: *Epilepsy in Children: The Impact of the Gut Microbiota and Epigenetics in Successful Treatment of Epilepsy*. Supervisor: Kaja Kristine Selmer. Co-supervisors: Knut Rudi, Per Ole Iversen, and Benedicte Alexandra Lie
- **Ellen Molteberg**: *Long term effects of modified Atkins diet in therapy-resistant epilepsy*. Supervisor: Erik Taubøll. Co-supervisor: Per Medbøe Thorsby and Karl O. Nakken

Dr. philos. candidate:

- Oliver Henning: *"Sexuality, depression and side effects in refractory epilepsy patients"*. Supervisor: Morten I. Lossius

Post doc:

- Silje Alvestad: *"Scandinavian multi-registry study of antiepileptic drug teratogenicity: the SCAN-A study"*

PhD-candidates not yet in the UiO PhD program:

- Eli B. Kyte: *"Impact of epilepsy surgery on cognition, psychiatry and quality of life at the commencement of aging"*
Supervisor: Kristin Å. Alfstad
- Kathrine C. Haavardsholm: *"Long term effect of ketogenic diet in children with epilepsy"*
Supervisor: Anette Ramm Pettersen
- Konstantin H. Kostov: *"Clinical outcomes and determinants of effectiveness of vagus nerve stimulation in a large national refractory epilepsy population"*
Supervisor: Jukka Peltola. Co-supervisor: Morten I. Lossius and Pål Gunnar Larsson

PhD-candidates in the UiO PhD program, associated to the group:

- Anette Huuse Farnen: *"Effect of epilepsy and antiepileptic drugs in pregnancy: cognition, neurodevelopmental symptoms and obstetric outcome in offspring – a prospective cohort study"*
Supervisor: Morten I. Lossius. Co-supervisor: Merethe Øien

International projects:

- “EURAP study. An International Antiepileptic Drugs and Pregnancy Registry” (International concerted Action on the Teratogenesis of Anti-epileptic Drugs) (<http://www.eurapinternational.org/>); **Silje Alvestad** and **Kari Mette Lillestølen**, national coordinators
- “E-PILEPSY” is a pan European project, with the primary aim of improving awareness and accessibility of surgery for epilepsy across different countries. Epilepsy surgery is an established treatment in the management of individuals with drug resistant focal epilepsy (<http://www.e-epilepsy.eu/>); **Morten I. Lossius**, associated partner
- “EpiCARE” European Reference Network (ERN) on rare and complex epilepsies associated member. Head of Scientific Advisory Board **Morten I. Lossius**
- “NESREC” Nordic Epilepsy Surgery Research Consortium. **SSE**
- “Nordic prospective observational study of outcomes after rare epilepsy surgery procedures”; **Fridny Heimsdottir**
- “TRACE” ((Transcutan VNS (t-VNS) for drug resistant epilepsy)); **Oliver Henning** and **Konstantin Kostov**
- “Pharmacokinetic variability, efficacy and tolerability of a new antiepileptic drug, brivaracetam” Scandinavian project between the National Centre for Epilepsy in Norway and Denmark (Filadelfia, Dianalund); **Torleiv Svendsen**, medical leader, **Cecilie Johannessen Landmark**, project leader
- “Children with refractory epilepsy and use of the newest antiepileptic drugs”. Scandinavian project between the National Center for Epilepsy in Norway and Denmark (Filadelfia, Dianalund); Margrete Larsen Burns, Marina Nikoronova, responsible in Denmark, **Cecilie Johannessen Landmark**, project leader
- “EDDI EMG triggered seizure alarm”; **Oliver Henning** in cooperation with Danish Epilepsy Center Dianalund
- “Scandinavian multi-registry study of antiepileptic drug teratogenicity: the SCAN-A study”; **Silje Alvestad**, post-doc, in cooperation with UiB/Haukeland
- CMD Expert Group. **Cecilie Johannessen Landmark**
- EpiPed. ILAE Task Force. **Cecilie Johannessen Landmark**
- EpiEd. ILAE Task Force. **Cecilie Johannessen Landmark**
- Pediatric Treatment. ILAE Task Force. **Cecilie Johannessen Landmark**
- **Tosca**. Novartis. Prot.No CRAD001MIC03: “TuberOus SCLerosis Registry to IncreAse Disease Awareness” International multicenter study. **Marit Bjørnvold**, Principle Investigator, and **Caroline Lund**
- **EXIST 3**. Novartis (everolimus). Prot.No. CRAD001M2304: “A three-arm, randomized, double- blind, placebo-controlled study of 2 trough-ranges of everolimus as adjunctive therapy in patients with tuberous schlerosis complex (TSC) who have refractory partial-onset seizures” International multicenter study; **Marit Bjørnvold**, principle investigator, and **Caroline Lund**





Most important national and international collaborators

National

- Prof. Eylert Brodtkorb, St. Olavs Hospital and NTNU, Trondheim
- Prof. Erik Taubøll, OUH and UiO

- Prof. Jeanette Koht, Drammen hospital and UiO
- Marte Syvertsen, MD, Drammen hospital and UiO
- Ass. prof. Marte Bjørk, Haukeland University Hospital and UiB

International

- Prof. Torbjörn Tomson, Karolinska Institutet, Stockholm, Sweden
- Prof. Philippe Ryvlin, Lausanne University Hospital, Switzerland
- Prof. Marina Nikorova, Dianalund, Denmark

- Prof. Christoph Helmstaedter, Bonn University Hospital, Germany
- Prof. Kristina Malmgren, Sahlgrenska University Hospital, Sweden
- Prof. Sándor Beniczky, Århus University, Denmark
- Prof. Guido Rubboli, Copenhagen University, Denmark
- Ass. Prof. Rikke Steensbjerre Møller, University of Southern Denmark, Denmark
- Prof. Jukka Peltola, Tampere University Hospital, Finland

Scientific production of the research group in 2018

Peer reviewed original research articles: 20

Other publications: 5

Dissertations : 1

Kari Modalsli Aaberg: *"Epilepsy in young children"*. June 04, 2018

Selected publications:

Aaberg KM, Bakken IJ, Lossius MI, Lund Sjøraas C, Tallur KK, Stoltenberg C, Chin R, Surén P (2018) *"Short-term Seizure Outcomes in Childhood Epilepsy"*

Pediatrics, 141 (6), (June 2018:e20174016)

Kverneland M, Molteberg E, Iversen PO, Veierød MB, Taubøll E, Selmer KK, Nakken KO (2018)

"Effect of modified Atkins diet in adults with drug-resistant focal epilepsy: A randomized clinical trial"

Epilepsia, 59 (8), 1567-1576

Farmen AH, Grundt JH, Nakling JO, Mowinckel P, Nakken KO, Lossius MI (2018)

"Increased rate of acute caesarean sections in women with epilepsy: results from the Oppland Perinatal Database in Norway"

Eur J Neurol, 26 (4), 617-623

Funding

- South-Eastern Norway Regional Health Authority
- Norwegian ExtraFoundation for Health and Rehabilitation
- Innlandet Hospital Trust



Neurovascular–Hydrocephalus Research Group



Group Leader

Per Kristian Eide, Professor, Dept of Neurosurgery, UiO (p.k.eide@medisin.uio.no)/
Head of Section, Dept of Neurosurgery, OUH (peide@ous-hf.no)

Group Members

- Brastad Evensen, Karen, PhD fellow, OUH
- Dahlberg, Daniel, PhD fellow, OUH
- Eide, Per Kristian, professor, OUH
- Fric, Radek, PhD fellow, OUH
- Hassan-Olive, Md Mahdi, PhD fellow, OUH
- Lashkarivand, Aslan, PhD fellow, OUH
- Langvatn, Erlend, Consultant, OUH
- Slettebø, Haldor, Senior Consultant, OUH
- Sortberg, Angelika, dr.med., OUH
- Sorteberg, Wilhelm, dr.med., OUH
- Stanisic, Milo, dr.med., OUH
- Ringsby, Jon-Olav, Consultant, OUH
- Wiedemann, Markus, PhD, Consultant, OUH

Research profile and aims

The research group focuses on clinical and translational neurosurgical research within the fields of neurovascular disease and cerebrospinal fluid disorders.

1. Cerebrovascular disorders. Cerebral hemodynamics. Focus on intracranial aneurysms and subarachnoid hemorrhage, including neurointensive monitoring and outcome.
2. Brain Monitoring. Several projects study intracranial pathophysiology with a strong focus on intracranial pressure and arterial blood pressure dynamics, and cerebral autoregulation.
3. Hydrocephalus. Studies focus on the pathophysiology of hydrocephalus and alterations in pressure dynamics in hydrocephalus and other brain water disorders. Translational research has been initiated to study molecular-genetic mechanisms of hydrocephalus and diseases involving disorders in brain water homeostasis. Clinical studies focus on outcome of treatment of hydrocephalus. Studies on imaging of CSF circulation.



Ongoing projects

- Pathophysiology by cerebral abscesses
- Pathophysiology of hydrocephalus and abnormal brain pressure
- Pathophysiology of subarachnoid hemorrhage and subdural hematomas
- Outcome of treatment of subarachnoid hemorrhage, vascular compression syndromes, stroke and hydrocephalus
- Bleeding Risks of cerebral aneurysms
- Rehabilitation after subarachnoid hemorrhage
- Diagnostic Imaging by disturbances in the cerebrospinal fluid circulation
- Non-invasive monitoring of intracranial pressure
- Glymphatic circulation in humans

Most important national and international collaborators

National

- Simula, UiO
- Physical medical dept, OUH
- Dept of Radiology, OUH
- Interventional Centre, OUH
- Dept of Informatics, UiO
- Dept of Mathematics, UiO
- Dept of Neurology, OUH
- Trauma Clinic , OUH
- Sunnaas Rehabilitation Hospital
- Institute of Basic Medical Sciences, UiO

International

- University of Gothenburg, Sweden (Prof. Hansson)
- University of Kupio, Finland
- University of Copenhagen

Funding

- South-Eastern Norway Regional Health Authority
- European Union

Scientific production of the research group in 2018

Peer reviewed original research articles: 20

Invited lectures at international congresses: >15





Doctoral dissertations: 3

Dahlberg, Daniel *“When bacteria hit the brain: toxic and depolarization levels of neuroactive amino acids, ammonia and potassium in brain abscesses”*

Institute of Clinical Medicine, Faculty of Medicine, University of Oslo, ISBN 978-82-8377-160-2
Dissertation January 19th 2018

Paulsen, Anne Henriette *“Adult outcome in pediatric hydrocephalus”*

Institute of Clinical Medicine, Faculty of Medicine, University of Oslo, ISBN 978-82-8377-195-4
Dissertation March 16th 2018

Ringstad, Geir *“Imaging cerebrospinal fluid dynamics in idiopathic normal pressure hydrocephalus”*

Institute of Clinical Medicine, Faculty of Medicine, University of Oslo, ISBN 978-82-8377-269-2
Dissertation September 14th 2018

Selected publications:

Haug Nordenmark T, Karic T, Sorteberg W, Sorteberg A (2018)

“Predictors of cognitive function in the acute phase after aneurysmal subarachnoid hemorrhage”

Acta Neurochir (Wien), 161 (1), 177-184

DOI 10.1007/s00701-018-3760-0, PubMed 30535853, WoS 000455568300029 (Details)

Lindstrøm EK, Ringstad G, Mardal KA, Eide PK (2018)

“Cerebrospinal fluid volumetric net flow rate and direction in idiopathic normal pressure hydrocephalus”

Neuroimage Clin, 20, 731-741

DOI 10.1016/j.nicl.2018.09.006, PubMed 30238917, WoS 000450799000079 Cristin 1607786 (Details)

Ringstad G, Valnes LM, Dale AM, Pripp AH, Vatnehol SS, Emblem KE, Mardal KA, Eide PK (2018)

“Brain-wide glymphatic enhancement and clearance in humans assessed with MRI”

JCI Insight, 3 (13), e121537

DOI 10.1172/jci.insight.121537, PubMed 29997300, WoS 000438547200009 Cristin 1591663 (Details)



Oslo Neurosurgical Outcome Study Group (ONOSG)



Professor Eirik Helseth, MD/PhD, Consultant neurosurgeon, Dept. of Neurosurgery, Oslo University Hospital (eirik.helseth@ous-hf.no) and Professor of Neurosurgery, Faculty of Medicine, University of Oslo (eirik.helseth@medisin.uio.no)



Torstein Meling, MD/PhD, Consultant neurosurgeon, Dept. of Neurosurgery, Oslo University Hospital (tmeling@ous-hf.no), Professor of Neurosurgery, Faculty of Medicine, University of Oslo and Assistant Professor, Institute of Psychology, University of Oslo (t.r.meling@medisin.uio.no)

Group Members

- Petter Brandal, MD/PhD, OUH
- Bjarne Lied, MD/PhD, Oslofjordklinikken
- Tom Børge Johannesen, MD/PhD, OUH
- David Scheie, MD/PhD, Rigshospitalet, Copenhagen, Denmark
- Mads Aarhus, MD/PhD, OUH
- Einar Vik-Mo, MD/PhD, OUH
- Charlotte Halvorsen, MD, PhD fellow, OUH
- Hege Linnerud, MD/PhD, OUH
- Markus Wiedmann, MD/PhD, OUH
- Jon-Terje Ramm-Pettersen, MD/PhD, OUH
- Pål Rønning, MD/PhD, OUH
- Benjamin Lassen, MD, PhD fellow, OUH
- Marton König, MD, PhD fellow, Faculty of medicine, UiO
- Tor Brommeland, MD/PhD fellow, OUH
- Ali Rizvi, MD, PhD fellow, OUH
- Christina Teisner Høstmælingen, MD, PhD fellow, OUH
- Cathrine Buaas Tverdal, registrar and PhD fellow, OUH
- Dag Ferner Netteland, PhD fellow
- Ola Fougner Skaansar, medical student, UiO
- Ingar Næss, medical student, UiO
- Guro Jahr, PhD fellow
- Michele Da Broi, MD/PhD fellow

Research profile and aims

Main focus on surgical complications and outcome after surgery for:

- Intracranial tumors
- Intraspinal tumors
- Outpatient spinal surgery
- Neurotrauma





Ongoing projects

- Intraspinial tumors – Surgical management
- Cervical trauma – Epidemiology and Surgical management
- Traumatic Brain Injury – Epidemiology and management
- Intracranial tumors – Epidemiology, imaging and management
- CenterTBI – European study
- Transocular ultrasound for ICP measurement – with SINTEF/Nisonic
- GLOBAL NEUROTRAUMA OUTCOMES STUDY (GNOS)
- Low-grade gliomas: Scandinavian Study of Surgical Selection, Techniques and Results (S4TAR)
- Safety of outpatient spine surgery

PhD projects

- Skull base tumors - Marton König
- CNS lymphomas – Guro Jahr
- Intracranial meningiomas – Michele Da Broi
- Intraspinial tumors – Charlotte Halvorsen
- Odontoid fractures – Ali Rizvi
- Subaxial cervical fractures - Christina Teiner Høstmælingen
- Transocular ultrasound for ICP measurement - Dag Ferner Netteland
- Traumatic brain injury – Cathrine Buas Tverdal

“Forskerlinje” projects

- Traumatic brain injury – Ola Fougner Skaansar
- Bicycle accidents – Ingar Næss

Funding

South-Eastern Norway Regional Health Authority

Scientific production of the research group in 2018

Peer reviewed original research articles: 21

Invited lectures at international congresses: 40





Selected publications:

König M, Osnes T, Jebsen P, Meling TR (2018)

“Craniofacial resection of malignant tumors of the anterior skull base: a case series and a systematic review”

Acta Neurochir (Wien), 160 (12), 2339-2348

DOI 10.1007/s00701-018-3716-4, PubMed 30402666, WoS 000450984500010 Cristin 1629947 (Details)

Formo M, Halvorsen CM, Dahlberg D, Brommeland T, Fredø H, Hald J, Scheie D, Langmoen IA, Lied B, Helseth E (2018)

“Minimally Invasive Microsurgical Resection of Primary, Intradural Spinal Tumors is Feasible and Safe: A Consecutive Series of 83 Patients”

Neurosurgery, 82 (3), 365-371

DOI 10.1093/neuros/nyx253, PubMed 29992282, WoS 000439685800038 Cristin 1567286 (Details)

Meling TR, Da Broi M, Scheie D, Helseth E (2018)

“Meningiomas: skull base versus non-skull base”

Neurosurg Rev, 42 (1), 163-173

DOI 10.1007/s10143-018-0976-7, PubMed 29627874 Cristin 1593332 (Details)



Vilhelm Magnus Laboratory for Neurosurgical Research



Group Leader

Iver A. Langmoen, MD/PhD, Professor, Dept of Neurosurgery, UiO
(i.a.langmoen@medisin.uio.no) /Dept of Neurosurgery, OUH (UXLAIV@ous-hf.no)

Group Members:

- Cecilie J Sandberg, MSc, PhD, Lab manager/HR/Daily activities, OUH
- Einar O. Vik-Mo, MD, PhD, Deputy group leader, OUH
- Awais Mughal, MD, PhD
- Kirsten Strømme Kireulf-Vieira, MD, PhD
- Artem Fayzullin, MD, PhD-student, UiO
- Erlend Skaga, MD, PhD-student, UiO
- Marit Brynjufsen, MSc, PhD-student, UiO
- Zanina Grieg, MSc, OUH
- Birthe Mikkelsen, BSc, OUH (leave of absence)
- Emily Palmero, BSc, OUH
- Elise Solli, MSc-student, NTNU

Research profile and aims

The Vilhelm Magnus Laboratory (VML) is a section within the Department of Neurosurgery focusing on translational research: exploration of the biology underlying neurosurgical conditions with an ambition of making contributions to novel treatments. Research efforts during the last 15 years have concentrated on stem cells from the adult human brain and brain cancer. The studies on brain cancer are focused on glioblastoma (GBM) which is both the most frequent and most deadly brain cancer (median survival in unselected series \approx 10 months).

Aims:

- To characterize cell types and cellular mechanisms in GBMs with special attention on GBM stem cells (GSCs)
- To develop therapeutic strategies against GCSs
- To characterize human brain stem cells and develop cell types for treatment of neurodegenerative disorders

Ongoing projects

Background

Fifteen years ago we showed for the first time that stem cells from the adult human brain can differentiate into functional neurons, and that it is possible to generate a small nervous system with numerous neurons that fire action potentials and communicate via synapses, from a single stem cell harvested from the adult human brain (Moe et al Brain, 2005;128:2189-99, Westerlund et al Exp Cell Res. 2003; 289:378-83, Moe et al Neurosurgery 2005;56:1182-8).

Simultaneously we started to grow cells from GBMs. A population of cells from these tumors turned out to have stem cell-like properties. We showed that a GBM only can be transferred from one animal to another by transplantation of cells from the GSC subpopulation, in keeping with other results indicating that it is this subpopulation that is responsible for recurrence, growth and drug resistance. We have therefore characterized GSCs quite extensively (Varghese et al Neurosurgery. 2008;63:1022-33; Vik-Mo et al, Neuro Oncol, 2010 Dec;12:1220-30, Vik-Mo et al, Exp Cell Res, 2011 Apr 15;317:1049-59, Joel et al, Dev Dyn, 2013;242:1078-93, Sandberg et al, Exp Cell Res, 2013 15;319:2230-43, Fayzullin et al Exp Cell Res. 2016 10;349:199-213, Mughal et al, Neoplasia. 2018;20:643-6569).

Development of a stem cell-based vaccine in patients with brain cancer:

We developed the first clinical protocol that targeted stem cells in a solid tumor by transducing dendritic cells from patients with mRNA from their own GBM stem cells. This significantly improved clinical outcome (Vik-Mo et al, Cancer Immunol Immunother. 2013;62:1499-509). One out of four of the patients are still alive.

The responders have a median survival of 7 years and are still recurrence free. A randomized trial of the vaccine was certified by all required authorities and started in the spring of 2018. Our intention in the current study is also to clarify why some patients respond and others do not; by in-depth studies of individual tumors and treatment responses.

Individualized systems medicine strategy to target GSCs in patients with recurrent glioblastoma:

In collaboration with our partners at the Finnish Institute for Molecular Medicine, we are combining the novel technical possibilities of high-throughput screening and deep sequencing with our established know-how on patient specific tumor stem cell cultures. Exploring a panel of 525 drugs established in clinical use, as well as drugs in early-phase development, at five different concentrations, we have screened stem cells from individual tumors for drug sensitivity. The approach has been coined Individualized Systems Medicine. This study has shown that GBMs from individual patients are very heterogeneous with respect to drug sensitivity. A manuscript has been submitted for publication.

A clinical trial where we treat patients based on the result from this screening has been planned and applications to relevant authorities are being sent.

Coordinated undermining of survival paths with nine repurposed drugs (CUSP9) and temozolomide in patient-derived GBM samples:

A major barrier to effective treatment in glioblastoma is the simultaneous activity of multiple survival and growth-promoting mechanisms. A conceptually new treatment approach has emerged focusing on coordinated blockade of the native survival paths of GBMs. The coordinated blockade is

undertaken by nine clinically well-known and repurposed drugs concomitant with the cytotoxic and standard of care, temozolomide, in a drug cocktail termed CUSP9. We have evaluated the in vitro efficacy of CUSP9 in patient-derived GBM samples using clinical relative drug concentrations across several different experimental cell assays. The coordinated approach has demonstrated a broad efficacy among several patient samples and experimental cell assays, and as the drugs have well-known safety profiles the results are intriguing for translation to patient treatment. A manuscript has been submitted for publication.

Characterization of invasive GCSs at the single cell level:

Glioblastomas are characterized by diffusely infiltrative growth. To investigate the invasive properties of glioblastoma cells we film cells while they invade into rodent brain slices or 3D-biomatrixes using time-lapse microscopy. We have identified subpopulations of cells with different invasive potentials. These cells display specific movement patterns and morphology. This is part of a PhD project where the last paper has been submitted and the thesis is expected to be submitted in 2018.

Molecular targeting of cancer stem cells in glioblastoma:

By performing a systematic comparison of gene expression in adult human neural stem cells and GSCs, we have identified differentially expressed genes that may have the potential as new and specific targets for treatment of glioblastoma. Our results from exploring several of these genes and pathways in-depth, suggest a functional role for the Wnt signaling pathway, PBK and NAT12/NAA30 in GBM. As a strategy to more efficiently and directly identify targets that are likely to trigger a therapeutic response, we are currently focusing on genetic high throughput loss-of function screening as tools to identify both individual and shared target hits in patient derived GSC cell cultures.

Most important national and international collaborators

National

- Gunnar Kvalheim/Dag Josefsen, OUH
- Steinar Aamdal/Paal Brunsvig, OUH
- Gustav Gaudernack, Targovax
- Kyrre Emblem, OUH
- Ola Myklebust, OUH
- Petter Brandal, OUH
- Elsa Lundanes, UiO
- Steven Wilson, UiO

International

- Krister Wennerberg, Markus Perola, Finnish Institute for Molecular Medicine, Finland
- Aki Laakso, Emilia Gaa-Paavola, Töölö Hospital, Helsinki, Finland
- Rainer Glass, LMU, München, Germany
- Krishna Bhat and Frederick Lang, MD Anderson Cancer Center, Houston, USA
- Winston Hide, Harvard University, MA, USA



Funding

- Norwegian Cancer Society
- The Norwegian Research Council
- South-Eastern Regional Health authorities
- OUH, Dept. of Neurosurgery

Scientific production of the research group in 2018

Peer reviewed original research articles: 6

Selected publications:

Mughal AA, Zhang L, Fayzullin A, Server A, Li Y, Wu Y, Glass R, Meling T, Langmoen IA, Leergaard TB, Vik-Mo EO

“Patters of Invasive Growth in Malignant Gliomas – The Hippocampus Emerges as an Invasion-Spared Brain Region”

Neoplasia. 2018 Jul;20(7):643-656.

Fayzullin A, Sandberg CJ, Spreadbury M, Saberniak BM, Grieg Z, Skaga E, Langmoen IA, Vik-Mo EO.

“Phenotypic and Expressional Heterogeneity in the Invasive Glioma Cells”

Transl Oncol. 2019 Jan;12(1):122-133.

Skottvoll FS, Berg HE, Bjørseth K, Lund K, Roos N, Bekhradnia S, Thiede B, Sandberg C, Vik-Mo EO, Roberg-Larsen H, Nyström B, Lundanes E, Wilson SR.

“Ultracentrifugation versus kit exosome isolation: nanoLC-MS and other tools reveal similar performance biomarkers, but also contaminations”

Future Sci OA. 2018 Nov 9;5(1):FSO359



Functional Neurosurgery Group



Group Leader

Pål G. Larsson, MD/Dr. philos, Head of Clinical Neurophysiology, Dept. of Neurosurgery, OUH (pall@ous-hf.no)

Group Members

- Arild Egge, MD/PhD, OUH
- Frode Kolstad, MD, PhD, OUH
- Milo Stanisic, MD, Dr.med., OUH
- Jugoslav Ivanovic, MD/PhD fellow
- Mark Züchner, MD/PhD, OUH
- Ane Konglund, MD/PhD, OUH
- Marianne Nævra, Mphil., OUH
- Ketil Berg Olsen, MD, OUH
- Lars Etholm, MD/PhD, OUH
- Anne Henriette Paulsen, MD/PhD

Research profile and aims

Main research aim is assessment of brain, medulla and peripheral nerve function and surgical treatment:

- Epilepsy surgery
- Deep brain stimulation
- Other electrical nerve tissue stimulation
- Assessment of grain function through EEG
- Stereotactic intracranial recording (SEEG)
- Function localization
- Clinical assessment through deep machine learning

Ongoing projects

- Cognitive function assessment through SEEG
- Consciousness assessment with transcranial magnetic stimulation (TMS) (EU HBP)
- Dynamics of large-scale cortical networks during general anesthesia
- Changes in brain connectivity during the Wada test
- Epilepsy surgery outcome
- Changes in connectivity in preterm children
- Adjuvant treatment with Cyclocapron in surgical treatment of CSDH
- ProTLE – follow up study of newly diagnosed temporal lobe epilepsies
- Long QT-time and seizures
- Continues spike wave during sleep (CSWS)
- Source localization in epilepsy (E-pilepsy, EU-consortium)
- Antiepileptic drug use in Norway



- Quality assessment of intraoperative neuro-monitoring in spine surgery (IONM)
- NORSTIM – prospective study of DBS in STN in Parkinson disease
- DBS in tremor
- Microbiota in Nuclius Subthalamicus and CSF in patients with Parkinson disease
- Predictors of VNS stimulation
- EEG as predictor of Brivaracetam effect
- Interictal EEG features as biomarkers in presurgical epilepsy work up
- Refractory status epilepticus
- Genetic mapping in Moya Moya

Most important national and international collaborators

National

- Institute of Psychology, UiO
- Institute of Basic Medical Sciences, UiO
- Department of Neurology, OUH
- Department of Anesthesiology, OUH
- Children's Department, UUS, OUH
- National Center for Epilepsy, OUH
- Department of Radiology, OUH
- Research laboratory, DNR, OUH
- Internal Medicine, OUH
- OsloMet
- Department of Engineering Cybernetics, NTNU

International

- Helene Wills institute, UC Berkeley, US
- Department of Neurology, Marburg , Germany
- Clinical Neurophysiology, Århus, Denmark
- Dianalund Epilepsy Center, Denmark

Scientific production of the research group in 2018

Peer reviewed original research articles: 14

Invited lectures at international congresses: 12 of whom 3 in international meetings

Doctoral dissertations: 2 (with collaborating partners)

Arton Baftiu *"Antiepileptic drug utilization and clinical implications"*

Department of Life Science and Health, Faculty of Life Sciences, OsloMet,
ISBN 978-82-8364-088-5

Paulsen, Anne Henriette *"Adult outcome in pediatric hydrocephalus"*

Department of Neurosurgery, Faculty of Medicine, University of Oslo, ISBN 978-82-8377-195-4





Selected publications:

Juel BE, Romundstad L, Kolstad F, Storm JF, Larsson PG (2018)

"Distinguishing Anesthetized from Awake State in Patients: A New Approach Using One Second Segments of Raw EEG"

Front Hum Neurosci, 12, 40

DOI 10.3389/fnhum.2018.00040, PubMed 29515381, WoS 000425544400001 Cristin 1566930 (Details)

Züchner M, Kondratskaya E, Sylte CB, Glover JC, Boulland JL.

"Rapid recovery and altered neurochemical dependence of locomotor central pattern generation following lumbar neonatal spinal cord injury"

J Physiol. 2018 Jan 15;596(2):281-303

Johnson EL, Adams JN, Solbakk AK, Endestad T, Larsson PG, Ivanovic J, Meling TR, Lin JJ, Knight RT (2018)

"Dynamic frontotemporal systems process space and time in working memory"

PLoS Biol, 16 (3), e2004274

DOI 10.1371/journal.pbio.2004274, PubMed 29601574, WoS 000458621400003 Cristin 1592498 (Details)

Funding

- None directly to the group
- More national and international fundings through collaborators



Movement Disorders



Group Leader

Mathias Toft, MD/PhD, Professor and Senior consultant, Dept. of Neurology, UiO (mathias.toft@medisin.uio.no)/OUH (mtoft@ous-hf.no)

Group Members

- Victoria Berge, MD
- Silje Bjerknes, MD
- Kari Anne Bjørnarå, MD PhD (Vestre Viken)
- Vidar Gundersen, Prof MD PhD
- Sandra Pilar Henriksen, MSc
- Chiara Cappelletti, MSc
- Zafar Iqbal, PhD
- Nadja Anette Myrvik Kvernmo, MD
- Lasse Pihlstrøm, MD, PhD
- Inger Marie Skogseid, MD PhD
- Margrete Langmyhr, MSc
- Maren Stolp Andersen, MD
- Espen Dietrichs, Prof MD PhD
- Kristin Ørstavik, MD PhD
- Trine Haug Popperud, MD PhD
- Magnhild Rasmussen, MD PhD
- Ellen Annexstad, MD
- Marianne Nordstrøm, Registered dietitian, PhD
- Anna Benterud, MD (Ahus)
- Hanne Ludt Fossmo, MSc
- Gro Solbakken, MSc (Vestre Viken)

Research profile and aims

Our research aims at mapping the clinical expression, natural progression and treatment of movement disorders and neuromuscular disorders, as well as their causes (genetic disposition, environmental factors, and pathophysiological mechanisms).

Clinical research is performed at both sites of Department of Neurology, i.e. at Rikshospitalet (The National Hospital) and at Ullevål University Hospital. Laboratory research is performed in the Neuroscience Research Unit in our new facilities at Domus Medica IV, close to Rikshospitalet. Our Department is the secondary referral center for all neurology in Oslo (mainly at Ullevål), and the tertiary referral center for neurology in the South-East Health Region of Norway (which includes one half of the Norwegian population). In addition, we have different national functions, including deep brain stimulation (DBS) for movement disorders and other conditions (shared with St. Olavs hospital). The group is also part of the National Advisory Unit on Rare Disorders.

Ongoing projects

Our research group studies movement disorders and neuromuscular disorders. We have projects with focus on Parkinson's disease, dystonia, tremors and neuromuscular disorders, especially myotonic dystrophy and Duchenne muscular dystrophy. These topics include clinical research as well as laboratory research/translational research.

Most important national and international collaborators

National

- Division of Clinical Neuroscience, UiO (Internal collaboration, joint academic and laboratory)
- The other university hospitals in Norway
- Vestre Viken Hospital Trust
- Prof. Ole Andreassen, UiO, DemGene – Genetics of Dementia
- Dept. of Cardiology, OUH
- Prof. Jan Frich, Dept. of Health Management and Health Economics, UiO
- Prof. SO Kolseth, Dept. of Nutrition, Inst. of Basic Medical Sciences, UiO
- Sunnaas Hospital

International

- IPDGC (international Parkinson Disease Genetics Consortium)
- COURAGE-PD consortium
- Dr. Owen Ross, Mayo Clinic, USA
- GEO-DP consortium
- Dr Wilma van der Berg, VuMC University Hospital, Amsterdam, Netherlands
- Prof. Per Odin, Lund University, Sweden
- Prof. Henry Houlden, University College London, UK

Funding

Among others:

- The Research Council of Norway
- South-Eastern Norway Regional Health Authority
- Norwegian ExtraFoundation for Health and Rehabilitation
- Michael J. Fox Foundation (US)
- The Norwegian Health Association
- Stiftelsen Sophies Minde



Scientific production of the research group in 2018

Peer reviewed original research articles: 31

Selected publications:

Pihlstrøm L, Blauwendraat C, Cappelletti C, Berge-Seidl V, Langmyhr M, Henriksen SP, van de Berg WDJ, Gibbs JR, Cookson MR, International Parkinson Disease Genomics Consortium, North American Brain Expression Consortium, Singleton AB, Nalls MA, Toft M (2018)

"A comprehensive analysis of SNCA-related genetic risk in sporadic parkinson disease"

Ann Neurol, 84 (1), 117-129

DOI 10.1002/ana.25274, PubMed 30146727, WoS 000443302300011 Cristin 1614151 (Details)

Bjerknes S, Toft M, Konglund AE, Pham U, Waage TR, Pedersen L, Skjelland M, Haraldsen I, Andersson S, Dietrichs E, Skogseid IM (2018)

"Multiple Microelectrode Recordings in STN-DBS Surgery for Parkinson's Disease: A Randomized Study"

Mov Disord Clin Pract, 5 (3), 296-305

DOI 10.1002/mdc3.12621, PubMed 30009214, WoS 000435280300009 Cristin 1600490 (Details)

Fossmo HL, Holtebekk E, Giltvedt K, Dybesland AR, Sanaker PS, Ørstavik K (2018)

"Physical exercise in adults with hereditary neuromuscular disease"

Tidsskr Nor Laegeforen, 138 (11) DOI 10.4045/tidsskr.17.1024, PubMed 29947206, WoS 000436491800025 (Details)



Cerebrovascular diseases



Group Leader

Mona Skjelland, Associate professor and Consultant, Dept. of Neurology, UiO (m.e.skjelland@medisin.uio.no) and OUH (moskje@ous-hf.no)

Group Members

- Anne Hege Aamodt, MD, PhD, postdoc
- Lars Alteheld, MD
- Helge Fagerheim Bugge MD, PhD fellow
- Brian Enriques, MD
- Erik Eriksen, MD
- Mona Guterud, paramedics, PhD fellow
- Guri Hagberg MD, PhD fellow
- Sophia Charlotta Hamre, PhD fellow
- Maren Ranhoff Hov, MD, PhD, postdoc
- Gudrun Anette Høie, MD, PhD fellow
- Jørgen Ibsen, MD, PhD fellow
- Hege Ihle-Hansen, MD, PhD
- Svein Håkon Ingebretsen, MD
- Henriette Johansen, MD
- Mirza Jusufovic, MD, PhD
- Kristian Kraglund, MD, PhD
- Karianne Larsen, MD, PhD fellow
- Christian Lund, MD, PhD
- Terje Nome, MD
- Barbara Ratajczak-Tretel MD, PhD fellow
- David Russell, Professor emeritus
- Else-Charlotte Sandset, MD, PhD, postdoc
- Karolina Skagen, MD, PhD, postdoc
- Kristine Stø, MD, PhD fellow
- Mahtab Zamani, MD, PhD fellow
- Anna Tancinova, MD, PhD fellow
- Georgus Vlachos, MD, PhD fellow

Associate Group members

- Eivind Berge, Professor, UNN
- Mona Beyer, MD, Associate Professor
- Kjersti Johnsrud, MD, PhD fellow, OUH



Research profile and aims

The main goal is to conduct high-quality cerebrovascular research leading to new knowledge and hopefully better treatment of stroke patients. The main research areas are:

- **Acute stroke, inflammation and the gut-brain axis.** The main aim of this group is to study the role of inflammation in acute stroke, and the impact of gut microbiota on cerebrovascular disease. Subgroup leader is Karolina Skagen.
- **Pre-hospital and acute stroke.** The focus of this group is to improve and implement prehospital diagnostics and treatment of acute stroke patients. Subgroup leader is Else Charlotte Sandset.
- **Acute stroke treatment and atrial fibrillation.** The scientific research interest is acute stroke treatment, diagnostic workup in acute ischemic stroke and the relation between stroke and atrial fibrillation. Subgroup leader is Anne-Hege Aamodt.
- **Stroke and cognition.** This group aims to quantify and measure levels of cognitive impairment after stroke and to identify biological and clinical markers associated with prognosis for cognitive disorders following incident stroke. Subgroup leader is Hege Ihle-Hansen.

Ongoing projects

- The Gut and Oral bacteria, Atherosclerosis and Ischemic Stroke Study
- Atherosclerosis, Inflammation and Ischemic Stroke Study
- Acute cerebral thrombi: mapping the immuno-thrombotic content -developing clinical tools for identifying the embolic source
- Advanced ultrasound methods in the assessment of carotid plaque instability
- Inflammation, atherosclerosis and ischemic stroke in chronic rheumatological disease
- FETCH: Fetal microchimerism (FMC) and future maternal cardiovascular health
- Hidden impairment after stroke
- OSCAR; The Oslo Acute Revascularization Stroke Study
- NOR-FIB 1; A nordic multi-center prospective observational study of the occurrence of AF in patients with cryptogenic stroke / TIA
- NOR-CRAOS; The Norwegian Central Retinal Artery Occlusion and Thrombolysis Study
- TEN-CRAOS; A randomized controlled trial with tenecteplase in central retinal artery occlusion
- Para-NASPP; Diagnostics and triage of acute stroke by the National Institute of Stroke Scale (NIHSS) by paramedics, the Para-NASPP (Paramedic – Norwegian Acute Stroke Prehospital Project)
- Treat-NASPP; Prehospital advanced diagnostics and treatment of acute stroke
- The rural CT-study. A case-control study with pre-hospital treatment with intravenous thrombolysis in acute stroke at “Sjukestugu Ål”
- NorCOAST; The Norwegian Cognitive impairment after Stroke study. A descriptive cohort study recruiting patients from five Norwegian hospitals
- ACE 1950; The ACE 1950 Study is a prospective, population-based, cohort study of the cardio- and cerebrovascular health of all men and women born in 1950 in Akershus County, Norway



Most important national and international collaborators

National

- Research Institute of Internal Medicine, RH, OUH, Prof Bente Halvorsen
- Norwegian Air Ambulance Foundation (NLA)
- Dep of Thoracic Surgery, OUH
- Dep of Ophthalmology, OUH, Prof Morten C Moe
- Dep of Infectious Diseases, OUH
- Dep of Transplantation Medicine, OUH, Senior researcher Johannes Espolin Hov
- **Division of Obstetrics and Gynaecology, OUH, Prof I Annetine Staff**
- Akershus University Hospital , Dep of vascular and Thoracic Surgery
- Østfold Hospital, Dep of cardiology and Dep of Neurology
- National Hospital of Epilepsy (SSE)
- Dep of Clinical and Molecular Medicine, NTNU, Prof Terje Espevik
- Institute of Basic Medical Science, biostatistics, OUH
- The Arctic University of Norway, UiT, Prof Ellisiv B Mathiesen

International

- University of Calgary, Canada, Prof Mayank Goyal
- The George Insitute for Global Health, China and Australia Prof Craig S. Anderson and Prof Philip M. Bath
- Nottingham University, UK
- University Hospital Bern, Switzerland, Prof Urs Fischer
- Greater Manchester Comprehensive Stroke Center, UK, Prof Craig Smith
- University of Maastricht, the Netherlands, Prof Erik Biessen

Funding

- South-Eastern Norway Regional Health Authority
- OUH
- NLA
- Research grants, Blix





Scientific production of the research group in 2018

Peer reviewed original research articles: 13

Invited lectures at International congresses:

- EC Sandset. ESO Karolinska Stroke Update, Stockholm. Blood pressure management during the chain of treatment in patients with acute ischaemic stroke
- AH Aamodt. ESOC, Gothenburg. Retinal artery occlusion: Diagnosis and management
- K Skagen. Virginia-Nordic Precision Neuroscience II, Oslo. Targeted anti-inflammatory treatment for ischemic stroke

Selected publications:

Larsen K, Bache KG, Franer E, Tveit LH, **Hov MR, Lund CG**, Solyga V, Lossius HM (2018)

"Pre-hospital thrombolysis of ischemic stroke in the emergency service system-A case report from the Treat-NASPP trial"

Acta Anaesthesiol Scand, 63 (3), 410-413

DOI 10.1111/aas.13285, PubMed 30426474, WoS 000458335800018 Cristin 1642989

Thingstad P, Askim T, Beyer MK, Bråthen G, Ellekjær H, **Ihle-Hansen H**, Knapsko.

"The Norwegian Cognitive impairment after stroke study (Nor-COAST): study protocol of a multicentre, prospective cohort study"

g AB, Lydersen S, Munthe-Kaas R, Næss H, Pendlebury ST, Seljeseth YM, Saltvedt I. BMC Neurol. 2018 Nov 26;18(1):193. doi: 10.1186/s12883-018-1198-x. PMID: 30477436

Skarpengland T, **Skjelland M**, Kong XY, **Skagen K**, Holm S, Otterdal K, Dahl CP, Krohg-Sørensen K, Sagen EL, Bjerkeli V, **Aamodt AH**, Abbas A, Gregersen I, Aukrust P, Halvorsen B, Dahl TB (2018).

"Increased Levels of Lectin-Like Oxidized Low-Density Lipoprotein Receptor-1 in Ischemic Stroke and Transient Ischemic Attack"

J Am Heart Assoc, 7 (2). DOI 10.1161/JAHA.117.006479, PubMed 29330254, WoS 000426642400011 Cristin 1517973



Epilepsy Research Group – Department of Neurology



Group Leader

Erik Taubøll, Professor, Dept. of Neurology, UiO
(erik.tauboll@medisin.uio.no) / OUH (erik.tauboll@ous-hf.no)

Group Members

- Erik Taubøll, Consultant, Professor
- Kjell Heuser, Consultant/Postdoc. Project leader; TLE/translation
- Sigrid Svalheim, Section Head. Project Leader; side effects of AED
- Dag Aurlien, Consultant, Stavanger. Project Leader; epilepsy and cardiology
- Agnes Balint Bjørke, MD, PhD fellow; TLE
- Toni Berger, MD, PhD fellow ; Marie Curie programme, EU
- Alba Gonzalez; MD, Ph.D. fellow; Epilepsy and cardiology
- Monika Mokol, PhD fellow; side effects of AED
- Helle Hermann, PhD fellow; deep brain stimulation for epilepsy
- Line Sveberg, Consultant; Women and epilepsy/autoimmune epilepsy
- Ketil Berg Olsen, Consultant; Status epilepticus
- Line Bedos Ulvin, MD; Status epilepticus
- Hild F. Sødal, MD; posttraumatic epilepsy project

Associated Group Members

- Cecilie Nome, Elective research student; TLE/translation
- Erlend Nagelhus, Professor, UiO
- Rune Enger, Elective research student; basic medical research
- Bjørnar Hassel, Department of Neurohabilitation, UiO/OUH
- Leif Gjerstad, MD/PhD Professor, OUH/UiO, Prof. emeritus
- Pål Gunnar Larsson, Department of Neurosurgery, OUH

Research profile and aims

The Epilepsy Research Group in Department of Neurology (ERGO) has been active for about 25 years. Our research is currently focused on four main areas:

1) Epilepsy-Translational Research. This focuses on research on temporal lobe epilepsy (TLE) through genetic, basic, and clinical studies. The leader is Kjell Heuser. The main project concerns studying the role of the brain's glial cells in the development and exacerbation of epilepsy (epileptogenesis). The initial studies are basic research using epilepsy models. In addition, larger patient trials are used in which the clinical, radiological (MRI), and neuropsychological development of TLE is monitored over time. Recently, we have also started epigenetic studies investigating changes in DNA methylation and gene expression during epileptogenesis.



2) "Gender issues", endocrinology and long-term effects of AEDs. The leader is Sigrid Svalheim. "Gender issues" have been an important area of research for the group over many years, with many PhD theses. The current major focus is studying the long-term side-effects of AEDs on hormones, immunology, haematology and bone health.

3) Epilepsy and cardiology / SUDEP (sudden unexpected death in epilepsy patients). The leader is Dag Aurlen who is presently based at Stavanger University Hospital. The project is a collaborative venture between Oslo University Hospital (OUS) and Stavanger University Hospital. Both clinical and basic animal research is going on.

4) Status epilepticus (SE). OUS has a large population of patients who has experienced SE and epidemiological studies have recently been performed regarding underlying causes, treatment, outcome etc. We will now especially focus especially on possible predictors for outcome and study in more detail treatment of the super refractory cases.

In addition to these four main areas of research, the group also has interests in deep brain stimulation (DBS) in epilepsy, ketogenic diets for adults, and status epilepticus.

Ongoing projects

1) Can the brain's glial cells be a point of attack for novel AED treatments? This is a major project in which, among other approaches, a mouse model is being used to investigate how epilepsy arises and evolves over time. The main question is how glia cells behave during the development and worsening of epilepsy, and whether these changes can be affected by various drugs such as AEDs, anti-inflammatory drugs, drugs that affect intracellular cell signalling etc.

In extension to this study, we are now also investigating possible epigenetic changes taking place during epileptogenesis. This is done in collaboration with Dr. Kaja K. Selmer and her group in Department of Genetics, OUS. Studying possible mechanisms involved in epileptogenesis may open new treatment strategies to prevent epilepsy, i.e. after stroke and brain injuries.

2) Is epilepsy a progressive disease? This is a long-term study that focuses on changes in the clinical, radiological and neuropsychological picture in patients with temporal lobe epilepsy (Pro-TLE). Comprehensive investigations are conducted on patients with newly diagnosed temporal lobe epilepsy at various time points over a 10-year period. We are also performing a retrospective study (Retro-TLE) investigating MR changes over time before operation in patients with surgically verified hippocampal sclerosis.

3) Long-term effects of AEDs. Patients starting treatment with the AEDs levetiracetam and lamotrigine will be followed prospectively for 2-years in terms of immunological, hormonal, and haematological adverse reactions, and possible changes in bone health. The data will be collected through interviews, questionnaires, blood tests, and bone density measurements. This project is supported with a 50 % PhD student from Østfold Hospital.

As part of this project, also studies on the effect of AEDs on gene expression related to immune genes are under way in collaboration with NMBU (Norwegian University of Life Sciences) and a study on the effect of AEDs on markers for inflammation in humans with epilepsy is performed together with collaborators in OUS.



4) Epilepsy and cardiology. It has become increasingly clear that several epilepsies are channelopathies, as are many cardiac arrhythmias, and are associated with many of the same channels and ions. The relationship between epilepsy and cardiac arrhythmias like the long QT syndrome (LQTS) is studied. This is also of central importance for understanding sudden unexpected death in epilepsy (SUDEP). We are also studying the impact of several years of active epilepsy on cardiac function.

An experimental study in mice experiencing status epilepticus to investigate possible deleterious effects on the heart using mouse MR, ecco-cor and ECG is also ongoing. This is done in collaboration with Prof. Ivar Sjøstad and his group in Institute for Experimental Medical Research, OUS – Ullevål.

5) National registration of refractory status epilepticus. We are collating national experiences on how patients with this condition are treated in Norway and how this can be improved. As there are only a few such patients at each centre, joint exchange of experiences is essential. Collection of data commenced in 2015. A national reference group for SE has been established.

6) Deep brain stimulation (DBS) in epilepsy. In this study patients with hard-to-treat epilepsy are treated with DBS using a blinded study design. The clinical work is now completed and the first results published.

7) Traumatic brain injury and posttraumatic epilepsy. A project is now starting up (2019) to study the possible predictive value of different parameters, especially related to inflammation, measured immediately after traumatic brain injuries on the frequency of posttraumatic epilepsy.

Most important national and international collaborators

National

- Dept. of Cardiology, OUH
- Kaja Selmer's research group, Div. of Clinical Neuroscience, OUH
- National Centre for Epilepsy
- Stavanger University Hospital
- Østfold Hospital
- Institute of Basic Medical Science, Glia cells research group (GLIALAB), UiO
- Prof. Erik Ropstad, NMBU (Norwegian University of Life Sciences)

International

- Institute of Cellular Neurosciences, Medical Faculty, University of Bonn, Germany (Prof. C. Steinhäuser)
- University of Innsbruck, Austria (Prof. G. Luef)
- Pavel Klein, the CURE programme for post-traumatic epilepsy research, Washington, USA
- To be started 2019: Annamaria Vezzani, Department of Neuroscience, IRCCS – Mario Negri Institute for Pharmacological Research, Milan, Italy



Scientific production of the research group in 2018

Peer-reviewed original research articles: 8

Other publications: 5 abstracts

Invited lectures at international congresses: 2

Toni Berger and Kjell Heuser, lecture at EU Glia PhD meeting, Malta 28.04 – 02.05.18

Toni Berger and Kjell Heuser, lecture at EU Glia PhD meeting, Paris 10.12 – 14.12.18

Selected publications:

Heuser K, Nome CG, Pettersen KH, Åbjørsbråten KS, Jensen V, Tang W, Sprengel R, Taubøll E, Nagelhus EA, Enger R.

“Ca²⁺ Signals in Astrocytes Facilitate Spread of Epileptiform Activity”

Cereb Cortex. 2018 Nov 1;28(11):4036-4048. doi: 10.1093/cercor/bhy196

Bjørke AB, Nome CG, Falk RS, Gjerstad L, Taubøll E, Heuser K.

“Evaluation of long-term antiepileptic drug use in patients with temporal lobe epilepsy: Assessment of risk factors for drug resistance and polypharmacy”

Seizure. 2018 Oct;61:63-70. doi: 10.1016/j.seizure.2018.07.011

González A, Aurlien D, Larsson PG, Olsen KB, Dahl IT, Edvardsen T, Haugaa KH, Taubøll E.

“Seizure-like episodes and EEG abnormalities in patients with long QT syndrome”

Seizure. 2018 Oct;61:214-220. doi: 10.1016/j.seizure.2018.08.020

Funding

- Health and rehab, 1 PhD
- The South-Eastern Norway Regional Health Authority, 1 PhD
- EU grant, 722053, Marie S Curie programme, 1 PhD



Multiple Sclerosis (MS)



Group Leader

Elisabeth Gulowsen Celius, Professor and consultant of Neurology (MD/PhD),
Department of Neurology, OUH and Institute of Clinical Medicine, UiO
(e.g.celius@medisin.uio.no/ uxelgu@ous-hf.no).

Group members

- Elisabeth Gulowsen Celius, MD/PhD, Professor, OUH/UiO
- Hanne Flinstad Harbo, MD/PhD/MHA, Professor, OUH/UiO
- Tone Berge, MSc/PhD, researcher OUH, Ass. prof., OsloMet
- Steffan D. Bos-Haugen, MSc/PhD, researcher, UiO
- Daniel Rinker, PhD, OUS (from December 2017)
- Pål Berg-Hansen, MD/PhD, engagement ass. professor UiO and consultant OUH
- Gro Owren Nygaard, MD/PhD, OUH
- Sigrid Aune de Rodez Benavent, MD/PhD fellow, Department of Ophthalmology, OUH/UIO
- Ingvild Sørnum Leikfoss, MSci/PhD, UiO
- Anna M. Eriksson, MSci/PhD fellow, UiO
- Ina S. Brorson, MSci/PhD fellow, OUH
- Einar August Høgestøl, MD/PhD fellow, UiO/OUH
- Cecilia Smith Simonsen, MD/PhD fellow, Drammen Hospital/OUH
- Heidi Øyen Flemmen, MD/PhD fellow, Skien Hospital/OUH
- Synne brune, MD/PhD fellow, UiO/OUH
- Line Broch, MD, PhD fellow (application in preparation), Drammen hospital/OUH (from 1.1.19)
- Chiara Cappelletti, MSci/PhD fellow (application in preparation), OsloMet (from 1.1.19)
- Zakia Raja, BSc, Master student, OsloMet
- Mikal Fitsum, BSc, Master student, OsloMet

Associated Group Members

- Marte Wendel Gustavsen, MD/PhD, STHF, Skien Hospital
- Stine Marit Moen, MD/PhD, Head of research and development, MS-Center, Hakadal
- Piotr Sowa, MD/PhD, Division of Radiology and Nuclear Medicine, OUH
- Mona K Beyer, MD/PhD, Professor, Division of Radiology and Nuclear Medicine UiO/OUH
- Christina Sundal, MD/PhD, Neuroclinic Norway

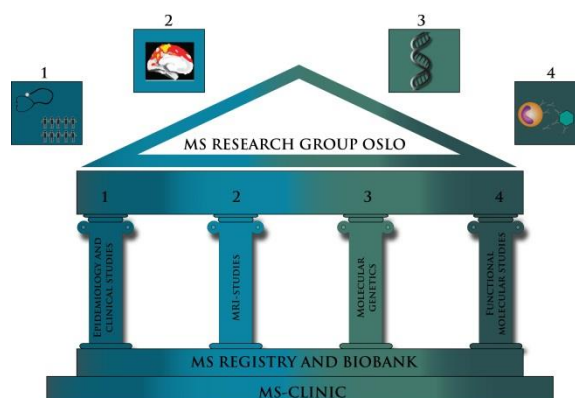
We have this year had six medical students connected to our group, writing student theses:

- Ellen Trap Aspeggen, UiO (Harbo/Høgestøl)
- Ingerid Maria Voorham Tuttoren, UiO (Harbo/Høgestøl)
- Magnus Ørseng Kværner, UiO (Harbo/Høgestøl)
- Inger Bjurstrøm (Berg-Hansen)
- Victoria Løvstad (Berg-Hansen)
- Sakina Baqeri (Celius)



Research profile and aims

Multiple Sclerosis (MS) research group at the Department of Neurology, OUH and UiO, aims to identify characteristics and susceptibility factors of MS, and to contribute to a better understanding of the disease and development of better treatments. We perform genetic, immunological, clinical, epidemiological, environmental, MRI and translational studies of MS in collaboration with national and international research partners and networks.



Ongoing projects

- Sigrid Aune de Rodez Benavent, PhD fellow: A longitudinal cohort study of ophthalmologic biomarkers correlated with neurodegeneration in early MS. (OUH Department of Ophthalmology) Supervisor: Elisabeth G. Celius, Co-supervisors: Emilia Kerty, Bruno Laeng and Liv Droslum.
- Tone Berge, researcher, Ingvild Sørnum Leikfoss (Senior Engineer): Vitamin D responsive regulation of susceptibility genes for autoimmune diseases. In collaboration with Professor Lisa Barcellos at the University of California.
- Steffan Daniel Bos, researcher: Identification of molecular mechanisms and biomarkers of Multiple Sclerosis (MS-biomarkers) – RNA sequencing of CD4+ and CD8+ T cells as potential biomarkers of MS phenotypes.
- Anna M. Eriksson, PhD fellow: Identification of molecular mechanisms and biomarkers of Multiple Sclerosis (MS-biomarkers) – molecular characterization of DEXI and other MS susceptibility genes. Supervisor: Tone Berge, Co-supervisors: Hanne F. Harbo and Steffan D. Bos.
- Ina S. Brorson, PhD fellow: Defining and characterizing molecular pathways in multiple sclerosis. Supervisor: Steffan D. Bos, Co-supervisors: Hanne F Harbo and Tone Berge.
- Einar August Høgestøl, PhD fellow: MRI- and other biomarkers in multiple sclerosis. Supervisor: Hanne F Harbo, Co supervisor: Lars T Westlye and Gro O Nygaard.
- Daniel Rinker, Post Doc from December 2017: Integrating genetic and MRI data in multiple sclerosis.
- Cecilia Smith Simonsen, PhD fellow : Predictors for disease susceptibility and disease progression in Multiple sclerosis, Supervisor: Elisabeth Gulowsen Celius, Co supervisors: Stine Marit Moen and Kari Anne Bjørnerå.
- Heidi Øyen Flemmen, PhD fellow : Socioeconomic factors as predictors for disease susceptibility and disease progression in Multiple sclerosis, Supervisor: Elisabeth Gulowsen Celius, Co supervisor: Pål Berg-Hansen.
- Line Broch, PhD fellow: Fatigue in Multiple Sclerosis. Supervisor: Elisabeth Gulowsen Celius, Co-supervisor: Heidi Ormstad (start 1.1.19).
- Synne Brune: PhD fellow: MRI changes and clinical MS phenotypes. Supervisor: Hanne F Harbo, Co supervisors: Mona K Beyer and Pål Berg-Hansen.



- Chiara Cappilletti, PhD fellow: Novel molecular mechanisms for severe brain disorders – a study using complex data analyses. Supervisor: Tone Berge, Co supervisor: Mathias Toft (start 1.1.19).
- Zakia Raja (Master project): Vitamin D regulation of MS-associated genes in CD4+ T cells. Supervisors: Tone Berge and Ingvild Sørum Leikfoss
- Mikal Fitsum (Master project): Genetic factors as risk factors in MS. How do they affect vitamin D response in CD8+ T cells. Supervisors: Tone Berge and Ingvild Sørum Leikfoss
- Tone Berge, collaboration with Professor Frode Berven at the University of Bergen; Mass spectrometry analyses of immune cells in multiple sclerosis (Funded through a grant from Biogen Idec to Berge).
- Ingvild Sørum Leikfoss, Anna M. Eriksson, Tone Berge: CLEC16A and other candidate genes.
- Ingvild Sørum Leikfoss, Synne Brune, Tone Berge: Neurofilament analysis in MS research and clinical practice.
- Hanne F Harbo, Steffan D. Bos, Elisabeth G Celius. MS chip study, collaboration with IMSCG (Harbo Oslo PI).
- Hanne F Harbo, Steffan D. Bos, Elisabeth G Celius. Exome chip study, collaboration with IMSCG. (Harbo Oslo PI).
- Hanne F Harbo, Steffan D. Bos, Pål Berg-Hansen, Mona Beyer: BorrSci study, lead from Kristiansand (South-Eastern Norway Multi- Regional Health Authority grant).
- Hanne F Harbo, Steffan D. Bos, Pål Berg-Hansen, Tone Berge, Ingvild S Leikfoss, Elisabeth G Celius Mona Beyer, Synne Brune: MultipleMS - partner in EU Horizon 2020-project (Harbo Oslo PI).
- Hanne F Harbo, Einar A Høgestøl, Sigrid de Rodez Benavent, Steffan Bos, Tone Berge, Synne Brune, Elisabeth G Celius, Mona Beyer: Sys4MS- Biotek 2021/NFR Project. (Harbo Oslo PI).
- Einar A Høgestøl, Steffan D. Bos, Hanne F Harbo: MYO Project. With Prof Pierre Gourraud, Nantes. NFR-Aurora travel grant (Harbo Oslo PI).
- Einar A Høgestøl, Hanne Harbo, Dan Rinker, Elisabeth Celius, Piotr Sowa, Mona K Beyer: NORMENT collaboration on various MRI projects.
- Elisabeth G. Celius, Mona Beyer, Piotr Sowa, Tobias Granberg : Neuroprotective effects of alemtuzumab in patients with MS in a clinical setting.
- Elisabeth G. Celius, Pål Berg-Hansen, Stine Marit Moen/MS-Centre Hakadal and SINTEF : AutoActive :Tools and Methods for Autonomous Analysis of Human Activities from Wearable Device Sensor Data (SINTEF PI).
- Elisabeth G. Celius, Stine Marit Moen/MS-Centre Hakadal and SINTEF: Digital oppfølging og støtte for personer med multipel sklerose (MS-DOS).
- Elisabeth Gulowsen Celius: Lemtrada PASS, international observational study. EGC national invetsigator.
- Elisabeth G. Celius, Stine Marit Moen/MS-Centre Hakadal, Tone Berge and OsloMet: Use of functional near-infrared spectroscopy analyses for studies of neuroplasticity in MS patients – a pilot study.





MS research group OUS-UiO photo 2018 at Domus Medica 4, UiO:

From left: Synne Brune (PhD student, MD), Gro Owren Nygaard (MD, PhD), Sigrid A. de Rodez Benavent (consultant of ophthalmology, PhD student, MD), Stine Marit Moen (consultant of neurology, MD, PhD, Head of research and development MS-Centre Hakadal), Einar August Høgestøl (PhD student, MD), Tone Berge (Ass.Professor at OsloMet – Oslo Metropolitan University and researcher at OUS, MSc, PhD), Heidi Øyen Flemmen (consultant of neurology, PhD student, MD), Pål Berg-Hansen (Ass.professor, PhD and consultant of neurology, MD,) Hanne F. Harbo (professor, consultant of neurology, MD, MHA, PhD), Cecilia Smith Simonsen (PhD student, MD), Daniel Rinker (Post Doc, PhD), Elisabeth Gulowsen Celius (consultant of neurology, Professor and project leader, MD, PhD), Anna Marie Eriksson (PhD student, Msc), Ina Skaara Brorson (PhD student, MSc), Ingvild Sørum Leikfoss (Senior engineer, PhD, Msc), Steffan Daniel Bos (post doc, PhD, MSc), Maite Larrañaga Fernandez (Erasmus Bachelor Student).

Funding

- South-Eastern Norway Regional Health Authority
- The Research Council of Norway
- University of Oslo
- European Commission: EU Horizon 2020
- European Commission/The Reserach Council of Norway: Sys4MS - Biotek 2021
- Norwegian Extra Foundation for Health and Rehabilitation
- South-Eastern Norway Multi- Regional Health Authority grant
- Unrestricted research grants from Novartis, Biogen, Genzyme,
- Odd Fellow Foundation, Forsberg and Aulie, and Ingrid and Fritz Nilsen, UNIFOR
- The Peder Saether Fundation

Most important national and international collaborators

National

- Mona Beyer, Rigmor Lundby, Atle Bjørnerud and Tuva Hope, Div. of Radiology and Nuclear Med., OUH
- Stine Marit Moen, MS-Center Hakadal
- Benedicte A. Lie, Dept. of Medical Genetics, OUH /UiO
- Kristine Walhovd and Anders Fjell, Dept. of Psychology, UiO
- Anne Spurkland, Institute of Basic Medical Sciences, UiO
- Bettina Kulle Andreassen, Cancer Registry, Norway
- Emilia Kerty, Dept. of Neurology, OUH/UiO
- Liv Drolsum, Dept. of Ophthalmology, OUH/UiO
- Ole A. Andreassen, Lars T. Westlye, Tobias Kaufman and Dag Alnæs, NORMENT, OUH/UiO
- Odd Stokke Gabrielsen, Section for Biochemistry and Molecular Biology, UiO
- Greger Abrahamsen and Vibeke Sundvold, Div. of Anatomy, Molecular Immunology (MOLIMMUN), UiO
- Trygve Holmøy, Dept. of Neurology, Akershus University Hospital
- Torbjørn Rognes, Section for Biomedical Informatics, Dept. of Informatics, UiO
- Nils Inge Landrø and Bruno Laeng, Dept. of Psychology, UiO
- Ole Landsverk, Dept of Pathology, KLM, OUH
- Kristian Bernhard Nilsen and L. Etholm, Dept. of Neurophysiology, OUH
- Kjell-Morten Myhr and Jan Aarseth, Haukeland University Hospital
- Frode Berven, Dept. of Biomedicine, Uiniversity of Bergen
- Åslaug Lorentzen, Dep. of Neurology, Sørlandet Sykehus

International

- Lisa Barcellos, University of California, Berkeley, US
- Stephen Sawcer, University of Cambridge, UK
- Jorge Oksenberg, University of California, San Francisco, US
- Sergio E. Baranzini, University of California, San Francisco, US
- Pablo Villoslada, Hospital Clinic of Barcelona, Spain
- Steve Francis, University of California, San Francisco, US
- Anders Dahle, University of California San Diego, US
- Soheil Damangir and Gabriela Spulber, Karolinska Institute, Stockholm, Sweden
- Jan Damoiseaux, Dept. of Neurology, Canisius Wilhelmina Hospital, Nijmegen, the Netherlands
- Joost Smolders, Dept. of Neurology, Canisius Wilhelmina Hospital, Nijmegen, the Netherlands
- B. Wilhelm, Steinbeis Transfer-Centre for Biomedical Optics and Function Testing, Tübingen, Germany
- Nordic MS genetics consortium (Hillert, Olsson, Kockum, Oturai, Sørensen, Saareala)
- International MS Genetics Consortium (Adrian Ivinson, Stephen Sawcer, Stephen Hauser, An Goris)
- Helen Tremlett, Dept of Neurology, Vancouver, Canada
- Pierre Antoine Gourraud, Hôpital St-Jacques - CHU de Nantes, France
- Jennifer Graves, University of California, San Diego, US
- Tobias Granberg, Karolinska Institute, Stockholm, Sweden
- Heidi Ormstad, Universitetet Sør-Øst
- Kaj Blennow, Sahlgrenska University Hospital, Gothenburg, Sweden



Scientific production of the research group in 2018

Master thesis dissertations:

- Stud. med. Ellen Trap Aspeggen, UiO: Klinisk betydning av gadoliniumavleiring i hjernen hos pasienter med multippel sklerose (Harbo/Høgestøl)
- Stud. med. Ingerid Maria Voorham Tuttoren, UiO: Use of wearable biosensor in clinical examination of patients with multiple sclerosis (Harbo/Høgestøl)
- Stud.med. Victoria Løvstad og Stud.med. Inger Hagen Bjurstrøm: Erfaringer ved bruk av Lemtrada® hos MS-pasienter v/nevrologisk avdeling, OUS, Ullevål (Berg-Hansen)

Selected publications:

- *“Increased DNA methylation of SLFN12 in CD4+ and CD8+ T cells from multiple sclerosis patients”*
Rhead B, Brorson IS, Berge T, Adams C, Quach H, Moen SM, Berg-Hansen P, Celius EG, Sangurdekar DP, Bronson PG, Lea RA, Burnard S, Maltby VE, Scott RJ, Lechner-Scott J, Harbo HF, Bos SD, Barcellos LF.
PLoS One. 2018
- *“Low-Frequency and Rare-Coding Variation Contributes to Multiple Sclerosis Risk”*
International Multiple Sclerosis Genetics Consortium. chris.cotsapas@yale.edu
Cell. 2018
- *“Restriction spectrum imaging of white matter and its relation to neurological disability in multiple sclerosis”*
Sowa P, Harbo HF, White NS, Celius EG, Bartsch H, Berg-Hansen P, Moen SM, Bjørnerud A, Westlye LT, Andreassen OA, Dale AM, Beyer MK.
Mult Scler. 2018

Other publications (abstracts excluded):

Blogger Ekspertsykehuset OUS:

- Harbo HF. Livet ditt styres fra hjernen. Nov 2018
- Høgestøl EA. Ved å finne hjernealder kan vi gi deg bedre behandling av multippel sklerose. Nov 2018
- Celius EG. Multippel sklerose i dag er ikke hva det var før. Des 2018

Blogger DagensMedisin:

- Høgestøl EA. Fra forskerspire til muntlig presentasjon på verdens største MS congress. Nov 2018
- Høgestøl EA. MS – ikke ensbetydende med rullestol. Des 2018

Invited lectures at international congresses:

- Berg-Hansen P: Epidemiology and changes over time. Teva Nordic meeting, Stockholm, Sweden 27.1.18
- Celius EG: Clinical impact of sex hormone treatment in MS. Teva Nordic meeting, Stockholm, Sweden 28.1.18
- Celius EG: The dark side of MS: cognition and cognitive rehabilitation. 3rd Neurology Symposium of Military Hospitals, Spetses, Greece, 13.4.18
- Celius EG: WomeninMS. How can family planning be managed in a real life setting. EAN Lisbon, Portugal 17.6.18
- Celius EG: Patient experience, NorNe Early mavenclad Experience, Berlin, Germany, 10.10.18
- Harbo HF. Multiple approaches towards personalized medicine in the MultipleMS EU-project. MAGNIMS meeting , Siena, Italy 8.11.2018
- Harbo HF. IMSGC updates- and chair of meeting in Berlin, Germany, Oct 9 2018

- Harbo HF. Work package 8 updates and chair of stakeholder meetin. MultipleMS meetings at ECTRIMS congress in Berlin, Germany, Oct 9 an 11 2018
- Harbo HF. A proposal for a Norwegian Center for Clinical Treatment and Research. Virginia-Nordic Precision Neuroscience, Oslo, Norway, 20. September 2018
- Harbo HF. Communication, Dissemination and Exploitation in the EU MultipleMS project. MultipleMS meeting, London, UK, May 15th 2018

Hosting of meetings – invited guests:

- Diagnostics and Biomarker, half-day seminar arranged by Tone Berge and research group DIAMED at OsloMet, invited speaker Professor Frode Berven, UiB;; 28/11/18.
- Neuroscience Research Unit seminar- Cerebrospinal fluid proteomics for biomarker discovery in multiple sclerosis - coordinated by Tone Berge, invited speaker Professor Frode Berven, UiB; 29/11/18.
- Neuroscience Research Unit seminar with external evaluator, coordinated by Tone Berge, invited speaker and external evaluator –Professor Lars Westlye, UiO/OUS - Imaging Research in neurodegenerative disorders; 18/10/18
- University course on inflammatory demyelinating disorders in the CNS for candidates in neurology, 22-23/10/18, OUH (Berg-Hansen, Nygaard, Harbo, Celius).
- We hosted two open meetings for MS-patients and others during 2018. The first was a Kick-off meeting on the fourth follow-up of the Oslo Longitudinal MS Study held on the 30th of August. The second meeting was during the Brain Awareness Week on the 21st of November. Both meetings gathering large crowds and good debate.

Social media:

- The research group has its own designated Facebook page named “ Multippel Sklerose Forskningsgruppen Oslo”, currently with 426 followers. Here we keep our followers updated on our current ongoing research projects, as well as international MS research and dissemination activities concerning our research group
- We also have our own homepage at both the Oslo University Hospital and the University of Oslo, which we update on a regular basis
- During the Brain Awareness Month at the Oslo University Hospital in November 2018 many of our members also posted blog posts concerning different topics, reaching out to thousands of readers
- In association with the Multiple MS project, we also manage both the Facebook page and Twitter account to promote the project in social media



The screenshot shows a Facebook post from the page 'Multippel Sklerose Forskningsgruppen Oslo'. The post is by Einar August Hagestøl, a doctor and researcher, and is titled 'MS - ikke ensbetydende med rullestol'. The post has 1096 likes, 109 reactions, and 260 clicks on the link. The reaction breakdown is as follows:

Reaction	Count	On Post	On Link
Liker	93	22	71
Hjerte	4	1	3
Wow	1	0	1
Kommentarer	6	0	6
Delinger	5	5	0
Blovevisninger	0	109	151

Example of Facebook post



NEMU – Neurological and musculoskeletal pain and genetics



Group Leader

John-Anker Zwart, Professor, Dept. of Neurology, Head of Research, Division of Clinical Neuroscience, UiO (j.a.zwart@medisin.uio.no) / OUH (uxzwjo@ous-hf.no)

Group Members

- Ellen Jørum, Professor, UiO/OUH
- Kjersti Storheim, PhD/Associate Professor, OUH/OsloMet
- Astrid Lunestad, Research coordinator
- Ingrid Fjeldheim Bånerud, Msc/Administrative, OUH
- Olaf Fjeld, MD/PhD fellow
- Håvard Furunes, MD/PhD fellow
- Margreth Grotle, Professor, OUH/HioA
- Maren Hjelle Guddal, Msc/PhD fellow
- Alf Inge Hellevik, MD/PhD fellow, OUH/NTNU
- Ingrid Heuch, MD/Senior researcher, OUH
- Synne Øien Stensland, MD/ Postdoctoral fellow, OUH
- Marianne Bakke Johnsen, PhD/Postdoctoral fellow, UiO
- Kristin Ørstavik, MD, PhD/ Senior consultant, OUS
- Inge Petter Kleggetveit, MD/Postdoctoral fellow, OUH
- Ida Løchting, Msc/PhD fellow
- Kristian Bernhard Nilsen, MD/Associate Professor, OUH
- Linda M. Pedersen, PhD/Postdoctoral fellow, OUH
- Vibeke Siewers, Research coordinator, OUS
- Monica Wigemyr, Msc/Research coordinator, OUH
- Bendik Winsvold, MD/Postdoctoral fellow, OUH
- Lars Christian Haugli Bråten, MD/PhD fellow
- Maria Dehli Vigeland, Msc/PhD fellow
- Sigrid Børte, MD/PhD fellow
- Eira Ebbs, Msc/Research coordinator, OUH
- Amy Martinsen, Msc/Research coordinator, OUH
- Marie Udnesseter Lie, Msc/PhD fellow
- Espen Saxhaug Kristoffersen, MD/PhD, associate professor
- Tone Berge, Scientist
- Marie Skovli Pettersen, Master student
- Daniel Gregor Schulze, PhD fellow
- Dagrund Sagafos, PhD fellow
- Lars Kristian Lunden, PhD fellow
- Mads Peder Rolfsen, PhD fellow
- Kaja Kristine Selmer, Scientist
- Elisabeth Gjefsen, PhD fellow
- Ioannis Kitsos, PhD fellow
- Marianne Mørk, PhD fellow
- Gøril Brevik Melbye, PhD fellow



Research profile and aims

The main focus of the research group is to generate research based knowledge on genetics, mechanisms, prevention and treatment of pain in the musculoskeletal- and nervous system.

Ongoing projects

- The Acute Low-Back Pain Study. Clinical, neurophysiological and genetic risk factors
- Genetic risk variants in migraine and cardiovascular disease. The Gene HUNT study
- Risk factors for anterior cruciate ligament injuries in Norwegian adolescents and young adults: (the ACL/HUNT studies)
- BackToBasic; TNF alfa blocker treatment of chronic low-back pain with Modic changes, a randomized double blind multicenter placebo controlled trial
- Genetic and environmental causes of migraine, a large-scale family-based analysis
- Early risk factors for migraine. The young-HUNT study
- Familiar hemiplegic migraine in Norway
- The AIM-study (Antibiotics In Modic changes); antibiotic treatment of chronic low-back pain with Modic changes, a randomised double blind multicenter placebo controlled trial
- Epigenetic and molecular biomarkers in chronic low back pain and Modic changes. A case-control study
- The HUNT OsteoArthritis study (the HOA-study)
- Lumbar disc prosthesis versus multidisciplinary rehabilitation in chronic back pain and localized degenerative disc. Long term follow-up of a randomized multicentre trial
- The NORwegian Degenerative spinal STENosis-trial (the NORDSTEN-study)
- Physical activity and sport participation during adolescence and musculoskeletal complaints in adulthood. A population based cohort study
- Spinal surgery in Norway. Trends, costs and regional differences
- The Norwegian Cervical Arthroplasty Trial. The NORCAT study. A prospective, single blinded, randomized, controlled multicenter study
- Risk factors for development of chronic pain after hospitalization for acute low back pain and/or sciatica (RUKSAR)
- Clinical and genetic aspects of neuropathic pain (ClINGNeuP)
- Conditioned pain modulation with respect to different test pain stimuli (CPM2TS)
- Childbirths, hormonal factors and low back pain - a prospective epidemiological survey
- Back Pain in Elderly (BACE). A prospective cohort study of older people visiting primary care with a new episode of back pain
- Genetic risk factors for development of Pain – The Tromsø Study
- All-In-HUNT, genetic assessment of neurological and psychiatric disorders
- Targeting low back pain and comorbidity in primary care – a plan for a prospective study aimed to increase treatment effects in back pain (pilot project, NFR)
- Clinical and neurophysiological aspects of peripheral neuropathies
- Genetics of juvenile myoclonic epilepsy – a part of the BIOJUME consortium (BIOJUME)
- Gut microbiota in adult patients with epilepsy (EpiGUT – a pilot project)
- Epilepsy in Children: The Potential Impact of the Ketogenic Diet on Gut Microbiota and Epigenetics (EpiMICRO)
- Genetic mosaicism in overgrowth syndromes



- Neck surgery in Norway
- Exploring function and disability in patients with Cervical dystonia; an observational study
- Environmental and genetic causes of migraine in children and adolescents
- Migraines, obesity and body fat distribution
- Biomarkers in headaches

Most important national and international collaborators

National

- University Hospital of North Norway (UNN)
- The Arctic University of Norway (UiT)
- Drammen Hospital
- St.Olavs Hospital, Trondheim University Hospital
- The Hospital Østfold Kalnes
- Haukeland University Hospital
- University of Bergen (UiB)
- Stavanger University Hospital
- The National Institute of Occupational Health (STAMI)
- Norwegian University of Science and Technology (NTNU)
- OsloMet
- National Centre for Epilepsy (SSE)
- Norwegian Institute of Public Health (FHI)
- Diakonhjemmet Hospital

International

- Leiden University Medical Centre (LUMC), the Netherlands
- Broad Institute of MIT and Harvard, Boston, US
- Institute for Molecular Medicine (FIMM), Finland
- University of Oxford, UK
- Keele University, UK
- The Karolinska Institute, Sweden
- McGill University, Canada
- University of Munich, Germany
- University of Sydney, Australia
- University College London, UK
- Aarhus University Hospital, Denmark
- University Hospital RWTH Aachen, Germany
- The George Institute of Global Health, Australia
- Dianalund and University of Copenhagen, Denmark
- University of Erlangen-Nuremberg, Germany
- Queensland University of Technology, Australia
- Danish Headache Center, Denmark
- King's College, London, UK
- Vall d'Hebron University Hospital and Quirón Hospital, Spain
- Heidelberg University, Germany
- University of Michigan, US
- The low-back pain consortium
- The headache genetics consortium
- Erasmus MC, Rotterdam, the Netherlands

Scientific production of the research group in 2018

Peer reviewed original research articles: 15

Master thesis:

Marie Skovli Pettersen: *“Reliabilitet av Balance Evaluation Systems Test (BESTest) for personer med arvelig perifer nevropati”*





Selected publications:

Furunes H, Hellum C, Espeland A, Brox JI, Småstuen MC, Berg L, Storheim K (2018)
“Adjacent Disc Degeneration After Lumbar Total Disc Replacement or Nonoperative Treatment: A Randomized Study with 8-year Follow-up”
Spine (Phila Pa 1976), 43 (24), 1695-1703
DOI 10.1097/BRS.0000000000002712, PubMed 29794581, WoS 000452187300009 Crislin 1596288 (Details)

Johnsen MB, Winsvold BS, Børte S, Vie GÅ, Pedersen LM, Storheim K, Skorpen F, Hagen K, Bjørngaard JH, Åsvold BO, Zwart JA (2018)
“The causal role of smoking on the risk of headache. A Mendelian randomization analysis in the HUNT study”
Eur J Neurol, 25 (9), 1148-e102
DOI 10.1111/ene.13675, PubMed 29747220, WoS 000441240200014 Crislin 1584758 (Details)

Namer B, Schmidt D, Eberhardt E, Maroni M, Dorfmeister E, Kleggetveit IP, Kaluza L, Meents J, Gerlach A, Lin Z, Winterpacht A, Dragicevic E, Kohl Z, Schüttler J, Kurth I, Warncke T, Jorum E, Winner B, Lampert A (2018)
“Pain relief in a neuropathy patient by lacosamide: Proof of principle of clinical translation from patient-specific iPS cell-derived nociceptors”
EBioMedicine, 39, 401-408
DOI 10.1016/j.ebiom.2018.11.042, PubMed 30503201, WoS 000456677400048 (Details)

Funding

- South-Eastern Norway Regional Health Authority
- The Research Council of Norway
- The Norwegian Fund for Post-Graduate Training in Physiotherapy
- UiO
- OUH



Brain plasticity and neuropsychiatry



Group Leader

Torbjørn Elvsåshagen; M.D., PhD, postdoctoral research fellow; Department of Neurology, OUH (telvsaha@ous-hf.no) and Norwegian Centre for Mental Disorders Research (NORMENT), UiO (torbjorn.elvsashagen@medisin.uio.no)

Group Members

- Erlend Bøen; M.D., Ph.D.; Diakonhjemmet Hospital
- Britta Bürker; M.D., Ph.D. research fellow; OUH/UiO
- Guro Dunvoll; M.Sc., Ph.D. research fellow; OUH/UiO/Oslo and Akershus University College of Applied Sciences
- Torfinn Hynnekleiv; M.D.; OUH and Innlandet Hospital Trust
- Katalin Juhasz; M.D.; Akershus University Hospital
- Eva A. Malt; M.D., Ph.D., Assoc. professor; Inst. of Clinical Medicine, UiO
- Ulrik F. Malt; M.D., Ph.D., Professor emeritus; Inst. of Clinical Medicine, UiO
- Kåre Osnes; M.D., Ph.D.; Diakonhjemmet Hospital
- Torunn Søyseth; M.Sc., OUH
- Mathias Valstad; M.Sc., Ph.D. research fellow; OUH/UiO
- Nathalia Zak; M.D., Ph.D. research fellow; OUH/UiO

Associated Group Members

- Stein Andersson; Ph.D., Professor; Dept. of Psychology, UiO
- Atle Bjørnerud; Ph.D., Professor; OUH
- Birgitte Boye; M.D., Ph.D., Professor; Inst. of Basic Medical Sciences, UiO
- Torgeir Moberget; Ph.D., postdoctoral research fellow; OUH

Research profile and aims

Our group conducts research in the fields of adult brain plasticity and neuropsychiatry. Plasticity – the capacity for change – is increasingly recognized as an intrinsic property of the adult brain and may play important roles in the etiologies and treatments of neurological and psychiatric illnesses. Neuropsychiatry recognizes that the brain and mind are one, that mental illnesses are disorders of the brain, and that psychiatric symptoms are commonly found in neurological disorders. One important goal of neuropsychiatric research is to bridge the gap between neurology and psychiatry.

Among the main aims of our current research are:

1. To examine whether structural and functional brain plasticity are core characteristics of the human sleep-wake cycle
2. To increase our understanding of how novel schizophrenia- and bipolar disorder-associated genetic variants affect synaptic function and plasticity
3. To examine the role of brainstem regions in neuropsychiatric and neurological disorders



Ongoing projects

- Sleep-wake-dependent brain plasticity in health and depression
- Genes, synaptic function, and stem cells in bipolar disorder, schizophrenia, and autism spectrum disorder: from pathophysiology towards personalized medicine
- Brainstem volumes: genetic architecture and roles in neuropsychiatric and neurological disorders
- Brain plasticity and psychobiology in bipolar II disorder and borderline personality disorder
- G-protein genotypes and associations with anxiety and depression in the HUNT Study
- Studies of genotype-phenotype interactions in the 3q29 microdeletion syndrome
- Neuropsychiatry and coping in heart and lung transplantation
- Non-invasive human LTP-like plasticity – examining robustness, functional significance and clinical utility of a novel biomarker
- Mapping and modulating brain networks in severe mental illness: towards new targets for therapeutic non-invasive brain stimulation

Most important national and international collaborators

National

- Prof. Ole A. Andreassen, NORMENT, UiO/OUH
- Prof. Erik Jönsson, NORMENT, UiO
- Prof. Srdjan Djurovic, NORMENT, UiO
- Ass. prof. Lars T. Westlye and Dr. Tobias Kaufmann, NORMENT, UiO
- Prof. Bjørn Bjorvatn, Norwegian Competence Center for Sleep Disorders, Bergen
- Dr. Stine Knudsen, C. of Exp. For Neurodevelopmental Disorders and Hypersomnias, OUH
- Prof. Espen Dietrichs, Dept. of Neurology, OUH/UiO
- Prof. Guttorm Haugen, Dept. of Obstetrics and Gynecology, OUH/UiO
- Prof. Ragnhild Emblem, Dept. of Pediatric Surgery, OUH/UiO
- Prof. Sigmund Karterud, Dept. for Personality Psychiatry, OUH/UiO
- Prof. Lars Gullestad, Dept. of Cardiovascular Medicine, OUH/UiO
- Prof. Arne E. Vaaler, NTNU, BRAIN: Bipolar research and innovation network
- Prof. Hilde Nilsen, Dept. of Molecular Biology (EpiGen), UiO
- Prof. Jan Ivar Røssberg, OUS/UiO
- Prof. Gaute Einevoll, NMBU/UiO

International

- Ass. prof Ana Andreazza, Dept. of Psychiatry, University of Toronto, Canada
- Prof. and Chair Trevor Young, Dept. of Psychiatry, University of Toronto, Canada
- Prof. Eus van Someren, Netherlands Institute for Neuroscience, Amsterdam, the Netherlands
- Ass. prof. Mirjana Maletic-Savatic, Baylor College of Medicine, Houston, USA
- ENIGMA group (Enhancing NeuroImaging Genetics through Meta-Analysis)
- EURONET-SOMA: European Research Network on somatoform disorders; group leader: Prof. Bernd Löwe, Uni Hamburg-Eppendorf, Abt. Für Psychotherapie und Psychosomatische Medizin, Germany



Funding

- South-Eastern Norway Regional Health Authority
- Norwegian Competence Center for Sleep Disorders
- Oslo University Hospital
- Throne-Holst foundation
- Ebbe Frøland foundation

Scientific production of the research group in 2018

Peer reviewed original research articles: 25

Research grants:

Centre for rare disorders, Oslo University Hospital. *"The 3q29 project"*, 500KNOK, PI: Malt E.

Selected publications:

Elvsåshagen T, Mutsaerts HJ, Zak N, et al.

"Cerebral blood flow changes after a day of wake, sleep, and sleep deprivation"

Neuroimage. 2019 Feb 1;186:497-509. Epub 2018 Nov 22.

Ruderfer DM, Elvsåshagen T, Malt UF, et al.

"Genomic Dissection of Bipolar Disorder and Schizophrenia, Including 28 Subphenotypes"

Cell. 2018 Jun 14;173(7):1705-1715.e16.

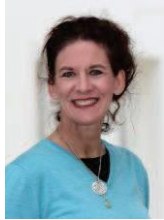
Nunes A, Bøen E, Elvsåshagen T, Malt UF, et al.

"Using structural MRI to identify bipolar disorders - 13 site machine learning study in 3020 individuals from the ENIGMA Bipolar Disorders Working Group"

Mol Psychiatry. 2018 Aug 31. doi: 10.1038/s41380-018-0228-9.



Cognitive Health in Brain Disorders (CHBD)



Group Leader

Ira Ronit Hebold Haraldsen, MD/PhD, OUH (i.haraldse@ous-hf.no)

Group Members

- Vebjørn Anderson, BSc, Technician, OUH
- Aksel Erichsen, MD, PhD-candidate, OUH
- Christoffer Hatlestad, cand.psychol., PhD-candidate, OUH
- Kjersti Gulbrandsen, MNSc, Clinical Nurse Specialist, OUH
- Reidar Jessen, cand.psychol., PhD-candidate, OUH
- Syed Nuruddin, VetMD, OUH
- Patrick Riss, PhD, Chemist, OUH/UiO
- Uta Sailer, PhD, Senior Researcher, OUH/UiO
- Helle Stangeland, MSc, Clinical Research Coordinator, OUH
- Stefan Sütterlin, PhD, Psychologist, OUH/HiØF
- Linn Cesilie Tovås, Research Assistant, OUH
- Slawomir Wojniusz, PhD, Physiotherapist, OUH/Oslo MET

Research profile and aims

We want to understand how and why physical trauma and somatic disorders affect cognitive functions and brain health. Our aim is to contribute to improved prevention, diagnosis and treatment of neuropsychiatric and neuroendocrinological diseases through high-quality research.

We are interested in how physical trauma and somatic disorders affect the central nervous system.

The CHBD group conducts research in the following areas:

- Healthy aging and neurodegenerative disease
- Non-reproductive, cognitive functions of gonadotropin releasing hormone (GnRH) and its receptor (GnRHR)
- Sex differences in brain function

We are currently trying to learn more about how diverse somatic disorders affect cognitive health, especially during puberty and aging. Because of our team's hands-on experience with basic science methods, as well as our clinical experience, we are able to take part in several translational research projects. Our methods range from microscopy and immunohistochemistry, to molecular imaging by



positron emission tomography and radiochemistry, to MR imaging and electrophysiological neuropsychological testing.

We are an international group of researchers that come from a variety of different educational backgrounds, including medicine, psychology, physiotherapy, nursing and biological science. Our multidisciplinary approach to brain-behavior relations allows us to conduct research across various systems and cognitive levels; from molecules to cells to cognitive systems to behaviors.

Ongoing projects

- Development of a Novel F18-PET tracer for early diagnosis of Alzheimer Dementia
- Novel risk factor assay for Alzheimer's disease-Multi-parametric quantification of HPG/HPT-axis dysfunction
- Does the gut hormone ghrelin act as a general reward enhancer?
- Effectiveness of somatocognitive therapy for the treatment of provoked localized vestibulodynia (the Pro-LoVe study)
- Gender dysphoria in adolescents – a qualitative study
- Gender dysphoria: Worldwide exacerbation, prevalence, and the impact of GnRH treatment on brain development; an investigation in a human and animal model (CONOS)

Most important national and international collaborators

National

- Atle Bjørnerud, OUH
- Tor Endestad, UiO
- Tormod Flatby, Ahus
- Trond Jenssen, OUH
- Jo Klaveness, UiO
- Pål Gunnar Larsen, OUH
- Per Magnus, FHI
- M. R. Amiry Moghaddam, UiO
- Syed Nurrudin, NMS
- Eirik Næs Ulseth, Pubgene
- Mona-Elisabeth Revheim, OUH
- Erik Ropstad, Norwegian School of Veterinary Science
- Thor Audun Saga, NMS
- Anne-Kristin Solbakk, OUH
- Jan Solberg, Inven2
- Erik Taubøll, OUH
- Reidun Torp, UiO

International

- Walter Bockting, New York, USA
- Neil Evans, Glasgow, Scotland
- Fernando Maestu, Madrid, Spain
- Laura Hughes, Cambridge, UK
- Ernesto Pereda, Madrid, Spain
- Hanna Renvall, Helsinki, Finland
- Jane Robinson, Glasgow, Scotland
- James Rowe, Cambridge, UK





Scientific production of the research group in 2018

Peer reviewed original research articles: 19

Selected publications:

Fjellaksel R, Oteiza A, Martin-Armas M, Riss PJ, Hjelstuen OK, Kuttner S, Hansen JH, Sundset R (2018)
"First in vivo evaluation of a potential SPECT brain radiotracer for the gonadotropin releasing hormone Receptor"

BMC Res Notes, 11 (1), 811

DOI 10.1186/s13104-018-3924-2, PubMed 30442192

Meessen J, Sütterlin S, Gauggel S, Forkmann T (2018)

"Learning by heart-the relationship between resting vagal tone and metacognitive judgments: a pilot Study"

Cogn Process, 19 (4), 557-561

DOI 10.1007/s10339-018-0865-6, PubMed 29796847

Stangeland H, Orgeta V, Bell V (2018)

"Poststroke psychosis: a systematic review"

J Neurol Neurosurg Psychiatry, 89 (8), 879-885

DOI 10.1136/jnnp-2017-317327, PubMed 29332009

Funding

- The Research Council of Norway
- South-Eastern Norway Regional Health Authority



Intellectual disability and neurohabilitation



Group Leader

Bjørnar Hassel, Professor, Dept. of Neurohabilitation, OUH
(bjornar.hassel@ous-hf.no) and UiO (bjornar.hassel@medisin.uio.no)

Group Members

- Nils Olav Aanonsen, MD, OUH
- Sigrun Hope, MD, PhD, OUH
- Anne Katrin T. Holmøy, MD, OUH
- Kathrine Haggag, MD, OUS
- Jutta Rummel, MD, OUS
- Alma Sikiric, MD, OUS
- Helene Portilla, MD, OUS
- Daniel Dahlberg, MD, OUS
- Amalie Poole, Stud. med.
- Marleen van Walsem, PhD, OUS

Research profile and aims

The aim of the neurohabilitation research group is 1) to conduct research that will lead to improvement of the quality of life of persons with developmental disabilities, 2) to investigate mechanisms behind brain dysfunction and damage that leads to developmental disability.

In collaboration with the municipality of Oslo, SINTEF, and The University College of Oslo and Akershus we investigate the use of sensors for autonomic responses as a means of communication for developmentally disabled persons who are unable to express their needs.

To investigate mechanisms that underlie some forms of developmental disability we use clinical and preclinical approaches to elucidate mechanisms of toxicity of certain metabolites and microbes.

Ongoing projects

- Wearable sensors for autonomic responses as a means of communication for persons with developmental disability who lack the ability to express themselves
- Mechanisms of seizure generation and cell death during brain abscess formation, a preventable cause of developmental disability
- Mechanisms of cell death and seizure generation during formation of cystic brain tumors
- The effects on brain cells of propionic acid, a metabolite that causes cerebral dysfunction in an inborn error of metabolism
- The metabolism of fructose and its metabolite glyceraldehyde, two causes of neurodegeneration through formation of advanced glycation end products





Most important national and international collaborators

National

- Cecilie Morland, HIOA/Inst. of Pharmacy, UiO
- Frode Strisland, SINTEF – Smart sensor systems, Oslo
- Oslo Municipality and the burroughs of Nordstrand, Østensjø and Vestre Aker
- Erik Taubøll, Dept. of Neurology, UiO
- Torgeir Bruun Wyller, Leiv Otto Watne and Nenad Bogdanovic, Dept. of Geriatrics, OUH
- Espen Mariussen and Øyvind Voie, Norwegian Defence Research Establishment, Kjeller
- Frode Rise, Inst. of Chemistry, UiO

International

- Farshid Amirabdollahian, University of Hertfordshire, UK
- Sergio Guillen, Mysphera, TSB Real time location systems, Valencia, Spain
- Jordi Rovirasimon, Parc Sanitari Sant Joan de Deu, Barcelona, Spain
- Raymond Dingledine, Emory University, Atlanta, GA, USA

Scientific production of the research group in 2018

Peer reviewed original research articles: 11

Selected publications:

Hassel B, Mariussen E, Idland AV, Dahl GT, Ræder J, Frihagen F, Berg JP, Chaudhry FA, Wyller TB, Watne LO (2018)

“CSF sodium at toxic levels precedes delirium in hip fracture patients”

Neurotoxicology, 69, 11-16

DOI [10.1016/j.neuro.2018.08.010](https://doi.org/10.1016/j.neuro.2018.08.010), PubMed [30149051](https://pubmed.ncbi.nlm.nih.gov/30149051/), WoS [000451106200002](https://www.scopus.com/search/form.do?pr=1&id=5000451106200002) Cristin [1626113](https://www.cristin.no/record/1626113) (Details)

Reimers A, Helde G, Becser Andersen N, Aurlien D, Surlien Navjord E, Haggag K, Christensen J, Lillestølen KM, Nakken KO, Brodtkorb E (2018)

“Zonisamide serum concentrations during pregnancy”

Epilepsy Res, 144, 25-29

DOI [10.1016/j.eplepsyres.2018.05.002](https://doi.org/10.1016/j.eplepsyres.2018.05.002), PubMed [29751353](https://pubmed.ncbi.nlm.nih.gov/29751353/), WoS [000435622900005](https://www.scopus.com/search/form.do?pr=1&id=5000435622900005) Cristin [1594211](https://www.cristin.no/record/1594211) (Details)

Morland C, Frøland AS, Pettersen MN, Storm-Mathisen J, Gundersen V, Rise F, Hassel B (2018)

“Propionate enters GABAergic neurons, inhibits GABA transaminase, causes GABA accumulation and lethargy in a model of propionic academia”

Biochem J, 475 (4), 749-758

DOI [10.1042/BCJ20170814](https://doi.org/10.1042/BCJ20170814), PubMed [29339464](https://pubmed.ncbi.nlm.nih.gov/29339464/), WoS [000428086400004](https://www.scopus.com/search/form.do?pr=1&id=5000428086400004) Cristin [1555674](https://www.cristin.no/record/1555674) (Details)



Specialized medical rehabilitation – Sunnaas Rehabilitation Hospital



Group Leader

Johan K. Stanghelle, MD/PhD, Director of Research (johan.stanghelle@sunnaas.no)/
Professor, Dept. of Physical Medicine and Rehabilitation, UiO

Group Members

- Johan K. Stanghelle, MD/PhD, Professor, Sunnaas Rehabilitation Hospital/UiO
- Frank Becker, MD/PhD, ass Professor, Sunnaas Rehabilitation Hospital/UiO
- Grethe Månnum, MD/PhD, ass Professor, Sunnaas Rehabilitation Hospital/UiO
- Emil Kostovski, MD/PhD, postdoc fellow, Sunnaas Rehabilitation Hospital/UiO
- Svend Rand-Hendriksen, MD/PhD, postdoc fellow, Sunnaas Rehabilitation Hospital/UiO
- Dag Brekke, MD/PhD, Sunnaas Rehabilitation Hospital
- Tor Haugstad, MD/PhD, Sunnaas Rehabilitation Hospital
- Anne-Kristine Schanke, PSYCH/PhD, Professor, Sunnaas Rehabilitation Hospital/UiO
- Marianne Løvstad, PSYCH/PhD, ass Professor, Sunnaas Rehabilitation Hospital/UiO
- Solrun Sigurdardottir, PSYCH/PhD, postdoc fellow, Sunnaas Rehabilitation Hospital
- Jan Egil Nordvik, PSYCH/PhD, Sunnaas Rehabilitation Hospital
- Per Ola Rike, PSYCH/PhD, Sunnaas Rehabilitation Hospital
- Sveinung Tornås, PSYCH/PhD, Sunnaas Rehabilitation Hospital
- Solveig Hauger, PSYCH/PhD, Sunnaas Rehabilitation Hospital
- Arve I. Opheim, PT/PhD, Sunnaas Rehabilitation Hospital
- Vivien Jørgensen, PT/PhD, Sunnaas Rehabilitation Hospital
- Ellen Høyser, PT/PhD, Sunnaas Rehabilitation Hospital
- Anne Lannem, PT/PhD, ass Professor, Sunnaas Rehabilitation Hospital/Norwegian school of Sport Sciences
- Kirsti Skavberg Roaldsen, PT/PhD, ass Professor, Sunnaas Rehabilitation Hospital/OsloMet/Karolinska Institute
- Birgitta Langhammer, PT/PhD, Professor, Sunnaas Rehabilitation Hospital/OsloMet
- Ellen Berg Svendby, Cand Scient/PhD, Sunnaas Rehabilitation Hospital/OsloMet
- Grace I. Romsland, RN/PhD, Professor, Sunnaas Rehabilitation Hospital/OsloMet
- Melanie Kirmess, ST/PhD, ass Professor, Sunnaas Rehabilitation Hospital/UiO
- Vegard Strøm, Cand Scient/PhD, Sunnaas Rehabilitation Hospital
- Gry Velvin, SW/PhD, Sunnaas Rehabilitation Hospital

Associated group members:

- Fin Biering-Sørensen, MD/PhD, Professor, Copenhagen University
- Katharina Sunnerhagen, MD/PhD, Professor, Gothenburg University
- Lena Hartelius, ST/PhD, Professor, Gothenburg University
- Kerstin Fugl-Meyer, SW/PhD, Professor, Karolinska Institute
- Agneta Ståhle, PT/PhD, Professor, Karolinska Institute
- Helle Ploug Hansen, RN/PhD, Professor, University of Southern Denmark, Odense
- Jennie Ponsford, PSYCH/PhD, Professor, Monash University, Melbourne



Associated group members (continued):

PhD Fellows/MD: Thy Thy Vanem, Ingebjørg Irgens, Erlend Solberg Dørum, Hege Prag Øra, Claudia Nyberg, Vesna Miloshevska Jakimovska, Mladen Savikj, Svein Otto Fredwall, Kristine Marie M. Vege, Jelena Simic

PhD Fellows/PSYCH: Kjersti Mæhlum Walle, Daniel Løke, Geneviève Richard, Knut Kolskår

PhD Fellows/RN: Anne-Stine Røberg, Anne Geard

PhD Fellows/PT: Emelie Butler Forslund, Matthijs Wouda, Linda Rennie, Anu Piira

PhD Fellows/SW: Jannike K. Vikan

PhD Fellows/ST: Maribeth C. Rivelsrud

PhD Fellows/OT: Anne-Marthe Sanders

Administration:

Annette M. Juelsen

Research profile and aims

Clinical and some basic research within specialized rehabilitation, organized into four research groups: Brain injuries, Spinal cord injuries, Patients with movement problems and Patients with seldom diagnosis. The research is aiming to give optimal rehabilitation programs.

Ongoing projects

- Follow-up of the most serious injured patients after the July 22nd attack
- Multinational studies on specialized rehabilitation for stroke patients and spinal cord injuries
- Several studies on neuropsychological consequences after brain injury
- Several studies on movement disorders and gait analysis
- Basic physiological mechanisms after spinal cord injuries
- Basic mechanisms after brain injuries (fMRI, electrophysiological functions etc)
- Several studies on patients with seldom diagnosis

Most important national and international collaborators

National

- Oslo University Hospital
- Institute of Psychology, UiO
- OsloMet
- Norwegian Sport High School
- Haukeland University Hospital
- St. Olav Hospital
- University Hospital of North Norway
- Beitostølen Health Sport Center
- Hospitals in Health Region South-East

International

- Karolinska Institute, Stockholm, Sweden
- Gothenburg University, Sweden
- Copenhagen University, Denmark
- University of Southern Denmark, Odense; Denmark
- Monash University, Melbourne, Australia
- China Rehabilitation and Research Center, China
- Rusk Institute of Rehabilitation , NY, USA
- Policlinic no2, Petrozavodsk, Karelia, Russia
- Sheba Medical Center, Tel Aviv, Israel



- Betlehem Arab Society for Rehabilitation, Palestine
- El Wafa Hospital, Gaza, Palestine
- Sahlgrenska University Hospital, Högsbo, Sweden
- Bayi 81 Rehabilitation Center, Sichuan, China
- Schweizer Paraplegiker-Forschung AG, Switzerland

Scientific production of the research group in 2018

Peer reviewed original research articles: 50

Other Publications: 20

Doctoral thesis: 4

Anne Stine Bergquist Røberg	Momentum of coordination reform
Rongrong Wang	Life satisfaction in persons with stroke in China
Matthijs Ferdinand Wouda	High intensity aerobic exercise in ambulatory persons with..
Kjersti Mæhlum Walle	Attentional resources in unilateral spatial neglect

Selected publications:

Øra HP, Kirmess M, Brady MC, Winsnes IE, Hansen SM, Becker F (2018)
"Telerehabilitation for aphasia - protocol of a pragmatic, exploratory, pilot randomized controlled trial"
Trials, 19 (1), 208
DOI 10.1186/s13063-018-2588-5, PubMed 29606148, WoS 000428896100002 (Details)

Rike PO, Eriksen LA, Schanke AK (2018)
"Associations between self and informant ratings of executive functioning and driver behaviour following acquired brain injury"
J Rehabil Med, 50 (7), 589-597
DOI 10.2340/16501977-2359, PubMed 30003269, WoS 000438084000003 (Details)

Langhammer B, Sunnerhagen KS, Sällström S, Becker F, Stanghelle JK (2018)
"Return to work after specialized rehabilitation-An explorative longitudinal study in a cohort of severely disabled persons with stroke in seven countries: The Sunnaas International Network stroke study"
Brain Behav, 8 (8), e01055
DOI 10.1002/brb3.1055, PubMed 30022609, WoS 000449070600017 (Details)





Publication list NVR research groups 2018

- Bonsaksen T, Dolva AS, Hagby C, [Sveen U](#), Horghagen S, Thyness EM, Arntzen C (2018)
Involvement in Research and Development Projects Among Community-working Occupational Therapists in Norway
Occup Ther Health Care, 33 (1), 22-36
DOI [10.1080/07380577.2018.1526434](https://doi.org/10.1080/07380577.2018.1526434), PubMed [30596456](https://pubmed.ncbi.nlm.nih.gov/30596456/), WoS [000467939600002](https://www.scopus.com/search/form.do?prf=pub&id=000467939600002) Cristin [1610433](https://www.cristin.no/1610433) ([Details](#))
- van Essen TA, den Boogert HF, Cnossen MC, de Ruiten GCW, Haitsma I, Polinder S, Steyerberg EW, Menon D, Maas AIR, Lingsma HF, Peul WC, CENTER-TBI Investigators and Participants (2018)
Variation in neurosurgical management of traumatic brain injury: a survey in 68 centers participating in the CENTER-TBI study
Acta Neurochir (Wien), 161 (3), 435-449
DOI [10.1007/s00701-018-3761-z](https://doi.org/10.1007/s00701-018-3761-z), PubMed [30569224](https://pubmed.ncbi.nlm.nih.gov/30569224/), WoS [000460607500002](https://www.scopus.com/search/form.do?prf=pub&id=000460607500002) Cristin [1665415](https://www.cristin.no/1665415) ([Details](#))
- Prasad K, Siemieniuk R, Hao Q, Guyatt G, O'Donnell M, Lytvyn L, Heen AF, Agoritsas T, Vandvik PO, Gorthi SP, Fisch L, [Jusufovic M](#), Muller J, Booth B, Horton E, Fraiz A, Siemieniuk J, Fobuzi AC, Katragunta N, Rochweg B (2018)
Dual antiplatelet therapy with aspirin and clopidogrel for acute high risk transient ischaemic attack and minor ischaemic stroke: a clinical practice guideline
BMJ, 363, k5130
DOI [10.1136/bmj.k5130](https://doi.org/10.1136/bmj.k5130), PubMed [30563885](https://pubmed.ncbi.nlm.nih.gov/30563885/), WoS [000454293000002](https://www.scopus.com/search/form.do?prf=pub&id=000454293000002) Cristin [1674371](https://www.cristin.no/1674371) ([Details](#))
- [Eide PK](#), [Sorteberg A](#), [Sorteberg W](#), Lindstrøm EK, Mardal KA, [Ringstad G](#) (2018)
"Bucket" cerebrospinal fluid bulk flow: when the terrain disagrees with the map
Acta Neurochir (Wien), 161 (2), 259-261
DOI [10.1007/s00701-018-3775-6](https://doi.org/10.1007/s00701-018-3775-6), PubMed [30560378](https://pubmed.ncbi.nlm.nih.gov/30560378/), WoS [000458477400010](https://www.scopus.com/search/form.do?prf=pub&id=000458477400010) ([Details](#))
- Furunes H, [Hellum C](#), Espeland A, [Brox JI](#), [Småstuen MC](#), Berg L, [Storheim K](#) (2018)
Adjacent Disc Degeneration After Lumbar Total Disc Replacement or Nonoperative Treatment: A Randomized Study with 8-year Follow-up
Spine (Phila Pa 1976), 43 (24), 1695-1703
DOI [10.1097/BRS.0000000000002712](https://doi.org/10.1097/BRS.0000000000002712), PubMed [29794581](https://pubmed.ncbi.nlm.nih.gov/29794581/), WoS [000452187300009](https://www.scopus.com/search/form.do?prf=pub&id=000452187300009) Cristin [1596288](https://www.cristin.no/1596288) ([Details](#))
- Khalid Z, [Sorteberg W](#), [Nedregård B](#), [Sorteberg A](#) (2018)
Efficiency and complications of Woven EndoBridge (WEB) devices for treatment of larger, complex intracranial aneurysms-a single-center experience
Acta Neurochir (Wien), 161 (2), 393-401
DOI [10.1007/s00701-018-3752-0](https://doi.org/10.1007/s00701-018-3752-0), PubMed [30547246](https://pubmed.ncbi.nlm.nih.gov/30547246/), WoS [000458477400027](https://www.scopus.com/search/form.do?prf=pub&id=000458477400027) Cristin [1655624](https://www.cristin.no/1655624) ([Details](#))
- [Herrman H](#), [Egge A](#), Konglund AE, [Ramm-Pettersen J](#), [Dietrichs E](#), [Taubøll E](#) (2018)
Anterior thalamic deep brain stimulation in refractory epilepsy: A randomized, double-blinded study
Acta Neurol Scand, 139 (3), 294-304
DOI [10.1111/ane.13047](https://doi.org/10.1111/ane.13047), PubMed [30427061](https://pubmed.ncbi.nlm.nih.gov/30427061/), WoS [000458682700011](https://www.scopus.com/search/form.do?prf=pub&id=000458682700011) Cristin [1682300](https://www.cristin.no/1682300) ([Details](#))





Farmen AH, Grundt JH, Nakling JO, [Mowinckel P](#), [Nakken KO](#), [Lossius MI](#) (2018)
Increased rate of acute caesarean sections in women with epilepsy: results from the Oppland Perinatal Database in Norway
Eur J Neurol, 26 (4), 617-623
DOI [10.1111/ene.13865](#), PubMed [30414297](#), WoS [000460307300013](#) Cristin [1675627](#) ([Details](#))

Haug Nordenmark T, Karic T, [Sorteberg W](#), [Sorteberg A](#) (2018)
Predictors of cognitive function in the acute phase after aneurysmal subarachnoid hemorrhage
Acta Neurochir (Wien), 161 (1), 177-184
DOI [10.1007/s00701-018-3760-0](#), PubMed [30535853](#), WoS [000455568300029](#) ([Details](#))

Manskow US, Arntzen C, Damsgård E, Braine M, [Sigurdardottir S](#), [Andelic N](#), [Røe C](#), Anke A (2018)
Family members' experience with in-hospital health care after severe traumatic brain injury: a national multicentre study
BMC Health Serv Res, 18 (1), 951
DOI [10.1186/s12913-018-3773-7](#), PubMed [30526574](#), WoS [000452735100002](#) Cristin [1642048](#) ([Details](#))

Sadaghiani S, Dombert PL, Løvstad M, Funderud I, [Meling TR](#), Endestad T, Knight RT, [Solbakk AK](#), D'Esposito M (2018)
Lesions to the Fronto-Parietal Network Impact Alpha-Band Phase Synchrony and Cognitive Control
Cereb Cortex (in press)
DOI [10.1093/cercor/bhy296](#), PubMed [30535068](#) Cristin [1677710](#) ([Details](#))

Zahl SM, [Egge A](#), [Helseth E](#), Skarbø AB, Wester K (2018)
Quality of life and physician-reported developmental, cognitive, and social problems in children with benign external hydrocephalus-long-term follow-up
Childs Nerv Syst, 35 (2), 245-250
DOI [10.1007/s00381-018-4016-2](#), PubMed [30523438](#), WoS [000457135900008](#) Cristin [1662778](#) ([Details](#))

Kondratskaya E, Ievglevskiy O, Züchner M, Samara A, Glover JC, [Boulland JL](#) (2018)
Locomotor central pattern generator excitability states and serotonin sensitivity after spontaneous recovery from a neonatal lumbar spinal cord injury
Brain Res, 1708, 10-19
DOI [10.1016/j.brainres.2018.12.001](#), PubMed [30521786](#), WoS [000460712300002](#) ([Details](#))

Samuelsson K, Radovic A, Press R, Auranen M, Ylikallio E, Tyynismaa H, KäRppä M, Veteläinen M, Peltola N, Mellgren SI, [Mygland Å](#), [Tallaksen C](#), Andersen H, Terkelsen AJ, Fontain F, Hietaharju A (2018)
Screening for Fabry disease and Hereditary ATTR amyloidosis in idiopathic small-fiber and mixed neuropathy
Muscle Nerve, 59 (3), 354-357
DOI [10.1002/mus.26348](#), PubMed [30246259](#), WoS [000458924000018](#) ([Details](#))

Wuytack F, Gutke A, [Stuge B](#), Mørkved S, Olsson C, Robinson HS, Vøllestad NK, Öberg B, Wikmar LN, Mena JJS, Smith V (2018)
Protocol for the development of a core outcome set for pelvic girdle pain, including methods for measuring the outcomes: the PGP-COS study
BMC Med Res Methodol, 18 (1), 158
DOI [10.1186/s12874-018-0624-5](#), PubMed [30509216](#), WoS [000451982500001](#) Cristin [1666094](#) ([Details](#))





Korhonen VE, Helisalml S, Jokinen A, Jokinen I, Lehtola JM, Oinas M, Lönnrot K, Avellan C, Kotkansalo A, Frantzen J, Rinne J, Ronkainen A, Kauppinen M, Junkkari A, Hiltunen M, Soininen H, Kurki M, Jääskeläinen JE, Koivisto AM, Sato H, Kato T, Remes AM, [Eide PK](#), Leinonen V (2018)

Copy number loss in *SFMBT1* is common among Finnish and Norwegian patients with iNPH
Neurol Genet, 4 (6), e291

DOI [10.1212/NXG.0000000000000291](#), PubMed [30584596](#), WoS [000455099800015](#) ([Details](#))

Parodi L, Fenu S, Barbier M, Banneau G, Duyckaerts C, Tezenas du Montcel S, Monin ML, Ait Said S, Guegan J, [Tallaksen CME](#), Sablonniere B, Brice A, Stevanin G, Depienne C, Durr A, SPATAX network (2018)

Spastic paraplegia due to SPAST mutations is modified by the underlying mutation and sex
Brain, 141 (12), 3331-3342

DOI [10.1093/brain/awy285](#), PubMed [30476002](#), WoS [000456597100011](#) Cristin [1680604](#) ([Details](#))

Kishore A, Ashok Kumar Sreelatha A, Sturm M, von-Zweyendorf F, [Pihlstrøm L](#), Raimondi F, Russell R, Lichtner P, Banerjee M, Krishnan S, Rajan R, Puthenveedu DK, Chung SJ, International Parkinson's Disease Genomics Consortium (IPDGC), Comprehensive Unbiased Risk Factor Assessment for Genetics and Environment in Parkinson's Disease (COURAGE-PD), Bauer P, Riess O, Gloeckner CJ, Kruger R, Gasser T, Sharma M (2018)
Understanding the role of genetic variability in LRRK2 in Indian population

Mov Disord, 34 (4), 496-505

DOI [10.1002/mds.27558](#), PubMed [30485545](#), WoS [000465047800009](#) Cristin [1683403](#) ([Details](#))

Namer B, Schmidt D, Eberhardt E, Maroni M, Dorfmeister E, [Kleggetveit IP](#), Kaluza L, Meents J, Gerlach A, Lin Z, Winterpacht A, Dragicevic E, Kohl Z, Schüttler J, Kurth I, [Warncke T](#), [Jorum E](#), Winner B, Lampert A (2018)

Pain relief in a neuropathy patient by lacosamide: Proof of principle of clinical translation from patient-specific iPS cell-derived nociceptors

EBioMedicine, 39, 401-408

DOI [10.1016/j.ebiom.2018.11.042](#), PubMed [30503201](#), WoS [000456677400048](#) ([Details](#))

Kristiansen M, Maple-Grødem J, Alves G, Arepalli S, Hernandez DG, Iwaki H, Nalls MA, Singleton A, Tysnes OB, [Toft M](#), [Pihlstrøm L](#) (2018)

A paradoxical relationship between family history, onset age, and genetic risk in Parkinson's disease
Mov Disord, 34 (2), 298-299

DOI [10.1002/mds.27555](#), PubMed [30484896](#), WoS [000458973000018](#) Cristin [1680454](#) ([Details](#))

Engstrom M, [Aarrestad S](#), Eldoen G, Alme A, Borge T, Miljeteig H, Bjorvatn B, [Knudsen S](#), Indrekvam S, [Nilsen KB](#) (2018)

New recommendations for objective examination of sleep and sleep disorders

Tidsskr. Nor. Laegeforen., 138 (19), 1805-1806

WoS [000452221600009](#) ([Details](#))

Randby H, Salvador CL, Oppebøen M, [Skogseid IM](#), [Koht J](#) (2018)

Dopa-responsive dystonia

Tidsskr Nor Laegeforen, 138 (19)

DOI [10.4045/tidsskr.17.0595](#), PubMed [30497245](#) Cristin [1662649](#) ([Details](#))





[Elvsåshagen T](#), [Mutsaerts HJ](#), [Zak N](#), [Norbom LB](#), [Quraishi SH](#), [Pedersen PØ](#), [Malt UF](#), [Westlye LT](#), [van Someren EJ](#), [Bjørnerud A](#), [Groote IR](#) (2018)

Cerebral blood flow changes after a day of wake, sleep, and sleep deprivation

Neuroimage, 186, 497-509

DOI [10.1016/j.neuroimage.2018.11.032](#), PubMed [30471387](#), WoS [000455968400046](#) Cristin [1671220](#) ([Details](#))

[Solheim O](#), [Skalleberg J](#), [Warncke T](#), [Ørstavik K](#), [Tropé C](#), [Fosså SD](#) (2018)

Long-term neurotoxicity and Raynaud's phenomenon in patients treated with cisplatin-based chemotherapy for malignant ovarian germ cell tumor

Acta Obstet Gynecol Scand, 98 (2), 240-249

DOI [10.1111/aogs.13477](#), PubMed [30289161](#), WoS [000456973200014](#) Cristin [1686335](#) ([Details](#))

[Fernández M](#), [Gómez LE](#), [Arias VB](#), [Aguayo V](#), [Amor AM](#), [Andelic N](#), [Verdugo MA](#) (2018)

A new scale for measuring quality of life in acquired brain injury

Qual Life Res, 28 (3), 801-814

DOI [10.1007/s11136-018-2047-5](#), PubMed [30448910](#), WoS [000459490400022](#) Cristin [1632349](#) ([Details](#))

[Syvertsen M](#), [Fløgstad I](#), [Enger U](#), [Landmark CJ](#), [Koht J](#) (2018)

Antiepileptic drug withdrawal in juvenile myoclonic epilepsy

Acta Neurol Scand, 139 (2), 192-198

DOI [10.1111/ane.13042](#), PubMed [30378684](#), WoS [000454813600013](#) Cristin [1641867](#) ([Details](#))

[Lindstrøm EK](#), [Ringstad G](#), [Sorteberg A](#), [Sorteberg W](#), [Mardal KA](#), [Eide PK](#) (2018)

Magnitude and direction of aqueductal cerebrospinal fluid flow: large variations in patients with intracranial aneurysms with or without a previous subarachnoid hemorrhage

Acta Neurochir (Wien), 161 (2), 247-256

DOI [10.1007/s00701-018-3730-6](#), PubMed [30443816](#), WoS [000458477400008](#) Cristin [1636854](#) ([Details](#))

[Fjellaksel R](#), [Oteiza A](#), [Martin-Armas M](#), [Riss PJ](#), [Hjelstuen OK](#), [Kuttner S](#), [Hansen JH](#), [Sundset R](#) (2018)

First in vivo evaluation of a potential SPECT brain radiotracer for the gonadotropin releasing hormone receptor

BMC Res Notes, 11 (1), 811

DOI [10.1186/s13104-018-3924-2](#), PubMed [30442192](#) Cristin [1631093](#) ([Details](#))

[Larsen K](#), [Bache KG](#), [Fraser E](#), [Tveit LH](#), [Hov MR](#), [Lund CG](#), [Solyga V](#), [Lossius HM](#) (2018)

Pre-hospital thrombolysis of ischemic stroke in the emergency service system-A case report from the Treat-NASPP trial

Acta Anaesthesiol Scand, 63 (3), 410-413

DOI [10.1111/aas.13285](#), PubMed [30426474](#), WoS [000458335800018](#) Cristin [1642989](#) ([Details](#))

[Pihlstrøm L](#), [Schottlaender L](#), [Chelban V](#), [Houlden H](#), [MSA Exome Consortium](#) (2018)

LRP10 in α -synucleinopathies

Lancet Neurol, 17 (12), 1033-1034

DOI [10.1016/S1474-4422\(18\)30407-1](#), PubMed [30507385](#), WoS [000450119300010](#) ([Details](#))



Katsifaraki M, [Nilsen KB](#), Christensen JO, Wærsted M, Knardahl S, Bjorvatn B, Härmä M, Matre D (2018)
Sleep duration mediates abdominal and lower-extremity pain after night work in nurses
Int Arch Occup Environ Health, 92 (3), 415-422
DOI [10.1007/s00420-018-1373-9](https://doi.org/10.1007/s00420-018-1373-9), PubMed [30417278](https://pubmed.ncbi.nlm.nih.gov/30417278/), WoS [000461337000013](https://www.scopus.com/search/form.do?prerender=true&query=000461337000013) Cristin [1630007](https://www.cristin.no/urn:nbn:no:ctin:1630007) ([Details](#))

Skottvoll FS, Berg HE, Bjørseth K, [Lund K](#), Roos N, Bekhradnia S, Thiede B, [Sandberg C](#), [Vik-Mo EO](#), Roberg-Larsen H, Nyström B, Lundanes E, Wilson SR (2018)
Ultracentrifugation versus kit exosome isolation: nanoLC-MS and other tools reveal similar performance biomarkers, but also contaminations
Future Sci OA, 5 (1), FSO359
DOI [10.4155/fsoa-2018-0088](https://doi.org/10.4155/fsoa-2018-0088), PubMed [30652024](https://pubmed.ncbi.nlm.nih.gov/30652024/), WoS [000456284600010](https://www.scopus.com/search/form.do?prerender=true&query=000456284600010) Cristin [1643067](https://www.cristin.no/urn:nbn:no:ctin:1643067) ([Details](#))

König M, [Osnes T](#), [Jebsen P](#), [Meling TR](#) (2018)
Craniofacial resection of malignant tumors of the anterior skull base: a case series and a systematic review
Acta Neurochir (Wien), 160 (12), 2339-2348
DOI [10.1007/s00701-018-3716-4](https://doi.org/10.1007/s00701-018-3716-4), PubMed [30402666](https://pubmed.ncbi.nlm.nih.gov/30402666/), WoS [000450984500010](https://www.scopus.com/search/form.do?prerender=true&query=000450984500010) Cristin [1629947](https://www.cristin.no/urn:nbn:no:ctin:1629947) ([Details](#))

Puhr A, [Ruud E](#), Anderson V, Due-Tønnesen BJ, Skarbø AB, [Finset A](#), Andersson S (2018)
Self-Reported Executive Dysfunction, Fatigue, and Psychological and Emotional Symptoms in Physically Well-Functioning Long-Term Survivors of Pediatric Brain Tumor
Dev Neuropsychol, 44 (1), 88-103
DOI [10.1080/87565641.2018.1540007](https://doi.org/10.1080/87565641.2018.1540007), PubMed [30395731](https://pubmed.ncbi.nlm.nih.gov/30395731/), WoS [000455823800005](https://www.scopus.com/search/form.do?prerender=true&query=000455823800005) Cristin [1629707](https://www.cristin.no/urn:nbn:no:ctin:1629707) ([Details](#))

Blauwendraat C, Reed X, Kia DA, Gan-Or Z, Lesage S, [Pihlstrøm L](#), Guerreiro R, Gibbs JR, Sabir M, Ahmed S, Ding J, Alcalay RN, Hassin-Baer S, Pittman AM, Brooks J, Edsall C, Hernandez DG, Chung SJ, Goldwurm S, [Toft M](#), Schulte C, Bras J, Wood NW, Brice A, Morris HR et al. (2018)
Frequency of Loss of Function Variants in LRRK2 in Parkinson Disease
JAMA Neurol, 75 (11), 1416-1422
DOI [10.1001/jamaneurol.2018.1885](https://doi.org/10.1001/jamaneurol.2018.1885), PubMed [30039155](https://pubmed.ncbi.nlm.nih.gov/30039155/), WoS [000449955900015](https://www.scopus.com/search/form.do?prerender=true&query=000449955900015) Cristin [1647865](https://www.cristin.no/urn:nbn:no:ctin:1647865) ([Details](#))

Vanem TT, [Geiran OR](#), [Krohg-Sørensen K](#), [Røe C](#), [Paus B](#), Rand-Hendriksen S (2018)
Survival, causes of death, and cardiovascular events in patients with Marfan syndrome
Mol Genet Genomic Med, 6 (6), 1114-1123
DOI [10.1002/mgg3.489](https://doi.org/10.1002/mgg3.489), PubMed [30393980](https://pubmed.ncbi.nlm.nih.gov/30393980/), WoS [000454205500025](https://www.scopus.com/search/form.do?prerender=true&query=000454205500025) Cristin [1639236](https://www.cristin.no/urn:nbn:no:ctin:1639236) ([Details](#))

[Heuser K](#), Nome CG, Pettersen KH, Åbjørsbråten KS, [Jensen V](#), Tang W, Sprengel R, [Taubøll E](#), [Nagelhus EA](#), [Enger R](#) (2018)
Ca²⁺ Signals in Astrocytes Facilitate Spread of Epileptiform Activity
Cereb Cortex, 28 (11), 4036-4048
DOI [10.1093/cercor/bhy196](https://doi.org/10.1093/cercor/bhy196), PubMed [30169757](https://pubmed.ncbi.nlm.nih.gov/30169757/), WoS [000449432200021](https://www.scopus.com/search/form.do?prerender=true&query=000449432200021) Cristin [1634008](https://www.cristin.no/urn:nbn:no:ctin:1634008) ([Details](#))

Hobart J, Bowen A, Pepper G, Crofts H, Eberhard L, Berger T, Boyko A, Boz C, Butzkueven H, [Celius EG](#), Drulovic J, Flores J, Horáková D, Lebrun-Fréney C, Marrie RA, Overell J, Piehl F, Rasmussen PV, Sá MJ, Sîrbu CA, Skromne E, Torkildsen Ø, van Pesch V, Vollmer T, Zakaria M et al. (2018)
International consensus on quality standards for brain health-focused care in multiple sclerosis
Mult Scler, 1352458518809326 (in press)
DOI [10.1177/1352458518809326](https://doi.org/10.1177/1352458518809326), PubMed [30381987](https://pubmed.ncbi.nlm.nih.gov/30381987/) Cristin [1681973](https://www.cristin.no/urn:nbn:no:ctin:1681973) ([Details](#))





[Tuft M, Henning O, Nakken KO](#) (2018)

Epilepsy and anxiety

Tidsskr Nor Laegeforen, 138 (17)

DOI [10.4045/tidsskr.17.1026](#), PubMed [30378412](#), WoS [000448931200020](#) Cistin [1641563](#) ([Details](#))

[Dietrichs E](#) (2018)

The Search for the Brain's GPS

Tidsskr. Nor. Laegeforen., 138 (17), 1660

WoS [000448931200032](#) ([Details](#))

[Aamodt AH](#) (2018)

The right dosage of mobilization

Tidsskr. Nor. Laegeforen., 138 (17), 1590

WoS [000448931200005](#) ([Details](#))

[Bjarkø VV, Skandsen T, Moen KG, Gulati S, Helseth E, Nilsen TIL, Vik A](#) (2018)

Time of Injury and Relation to Alcohol Intoxication in Moderate-to-Severe Traumatic Brain Injury: A Decade-Long Prospective Study

World Neurosurg, 122, e684-e689

DOI [10.1016/j.wneu.2018.10.122](#), PubMed [30385362](#), WoS [000457328100083](#) Cistin [1659033](#) ([Details](#))

[Aamodt AH, Kurz M, Jacobsen EA, Totland JA, Ronning OM, Thomassen L, Lund CG, Naess H](#) (2018)

The indication position of thrombectomy

Tidsskr. Nor. Laegeforen., 138 (17), 1592

WoS [000448931200006](#) ([Details](#))

[Abildgaard A, Roterud H, Beyer M, Hopp E, Bjornerud A, Smith HJ, Sakinis T](#) (2018)

Will radiologists be replaced by artificial intelligence?

Tidsskr. Nor. Laegeforen., 138 (17), 1610-1612

WoS [000448931200013](#) ([Details](#))

[Brommeland T, Helseth E, Aarhus M, Moen KG, Dyrskog S, Bergholt B, Olivecrona Z, Jeppesen E](#) (2018)

Best practice guidelines for blunt cerebrovascular injury (BCVI)

Scand J Trauma Resusc Emerg Med, 26 (1), 90

DOI [10.1186/s13049-018-0559-1](#), PubMed [30373641](#), WoS [000448850900001](#) Cistin [1627522](#) ([Details](#))

[Brox JI](#) (2018)

Lifting with straight legs and bent spine is not bad for your back

Scand J Pain, 18 (4), 563-564

DOI [10.1515/sjpain-2018-0302](#), PubMed [30285949](#), WoS [000451213600002](#) ([Details](#))

[Evensen KB, Paulat K, Prieur F, Holm S, Eide PK](#) (2018)

Utility of the Tympanic Membrane Pressure Waveform for Non-invasive Estimation of The Intracranial Pressure Waveform

Sci Rep, 8 (1), 15776

DOI [10.1038/s41598-018-34083-6](#), PubMed [30361489](#), WoS [000448270100026](#) Cistin [1624793](#) ([Details](#))





Kleggetveit IP, Jørum E (2018)

Reply to the Letter to the Editor by Ly-Pen and Andréu

Scand J Pain, 18 (4), 757

DOI [10.1515/sjpain-2018-0118](https://doi.org/10.1515/sjpain-2018-0118), PubMed [30145582](https://pubmed.ncbi.nlm.nih.gov/30145582/), WoS [000451213600027](https://www.scopus.com/search/form.do?prerender=true&query=000451213600027) ([Details](#))

Evensen KB, Eide PK (2018)

Noninvasive Estimation of Intracranial Pressure Waveform from Central Aortic Pressure Waveform

World Neurosurg, 121, 257-258

DOI [10.1016/j.wneu.2018.10.079](https://doi.org/10.1016/j.wneu.2018.10.079), PubMed [30347297](https://pubmed.ncbi.nlm.nih.gov/30347297/), WoS [000452897000169](https://www.scopus.com/search/form.do?prerender=true&query=000452897000169) ([Details](#))

[Dieset I](#), [Mørch RH](#), [Hope S](#), [Hoseth EZ](#), [Reponen EJ](#), [Gran JM](#), [Aas M](#), [Michelsen AE](#), [Reichborn-Kjennerud T](#), [Nesvåg R](#), [Agartz I](#), [Melle I](#), [Aukrust P](#), [Djurovic S](#), [Ueland T](#), [Andreassen OA](#) (2018)

An association between YKL-40 and type 2 diabetes in psychotic disorders

Acta Psychiatr Scand, 139 (1), 37-45

DOI [10.1111/acps.12971](https://doi.org/10.1111/acps.12971), PubMed [30328100](https://pubmed.ncbi.nlm.nih.gov/30328100/), WoS [000453778900005](https://www.scopus.com/search/form.do?prerender=true&query=000453778900005) Cristin [1637942](https://www.cristin.no/urn:nbn:no:ctin:1637942) ([Details](#))

Hasan-Olive MM, Enger R, Hansson HA, Nagelhus EA, Eide PK (2018)

Loss of perivascular aquaporin-4 in idiopathic normal pressure hydrocephalus

Glia, 67 (1), 91-100

DOI [10.1002/glia.23528](https://doi.org/10.1002/glia.23528), PubMed [30306658](https://pubmed.ncbi.nlm.nih.gov/30306658/), WoS [000454601200007](https://www.scopus.com/search/form.do?prerender=true&query=000454601200007) Cristin [1631808](https://www.cristin.no/urn:nbn:no:ctin:1631808) ([Details](#))

[Fayzullin A](#), [Sandberg CJ](#), [Spreadbury M](#), [Saberniak BM](#), [Grieg Z](#), [Skaga E](#), [Langmoen IA](#), [Vik-Mo EO](#) (2018)

Phenotypic and Expressional Heterogeneity in the Invasive Glioma Cells

Transl Oncol, 12 (1), 122-133

DOI [10.1016/j.tranon.2018.09.014](https://doi.org/10.1016/j.tranon.2018.09.014), PubMed [30292065](https://pubmed.ncbi.nlm.nih.gov/30292065/), WoS [000452892800015](https://www.scopus.com/search/form.do?prerender=true&query=000452892800015) Cristin [1687506](https://www.cristin.no/urn:nbn:no:ctin:1687506) ([Details](#))

Jensen SM, Arntzen KA, [Orstavik K](#), [Rasmussen M](#), Bindoff LA (2018)

Common promises for patients with neuromuscular diseases

Tidsskr. Nor. Laegeforen., 138 (15), 1408-1409

WoS [000448363700008](https://www.scopus.com/search/form.do?prerender=true&query=000448363700008) ([Details](#))

Bialer M, [Johannessen SI](#), [Koepp MJ](#), [Levy RH](#), [Perucca E](#), [Tomson T](#), [White HS](#) (2018)

Progress report on new antiepileptic drugs: A summary of the Fourteenth Eilat Conference on New Antiepileptic Drugs and Devices (EILAT XIV). II. Drugs in more advanced clinical development

Epilepsia, 59 (10), 1842-1866

DOI [10.1111/epi.14555](https://doi.org/10.1111/epi.14555), PubMed [30368788](https://pubmed.ncbi.nlm.nih.gov/30368788/), WoS [000449491800003](https://www.scopus.com/search/form.do?prerender=true&query=000449491800003) Cristin [1686654](https://www.cristin.no/urn:nbn:no:ctin:1686654) ([Details](#))

[Perin A](#), [Galbiati TF](#), [Gambatesa E](#), [Ayadi R](#), [Orena EF](#), [Cuomo V](#), [Riker NI](#), [Falsitta LV](#), [Schembari S](#), [Rizzo S](#), [European Neurosurgery Simulation Study Group \(ENSSG\)](#), [Luciano C](#), [Cappabianca P](#), [Meling TR](#), [Schaller K](#), [DiMeco F](#) (2018)

Filling the gap between the OR and virtual simulation: a European study on a basic neurosurgical procedure

Acta Neurochir (Wien), 160 (11), 2087-2097

DOI [10.1007/s00701-018-3676-8](https://doi.org/10.1007/s00701-018-3676-8), PubMed [30276545](https://pubmed.ncbi.nlm.nih.gov/30276545/), WoS [000449674300003](https://www.scopus.com/search/form.do?prerender=true&query=000449674300003) Cristin [1685318](https://www.cristin.no/urn:nbn:no:ctin:1685318) ([Details](#))





Bialer M, [Johannessen SI](#), Koepp MJ, Levy RH, Perucca E, Tomson T, White HS (2018)
Progress report on new antiepileptic drugs: A summary of the Fourteenth Eilat Conference on New Antiepileptic Drugs and Devices (EILAT XIV). I. Drugs in preclinical and early clinical development
Epilepsia, 59 (10), 1811-1841
DOI [10.1111/epi.14557](#), PubMed [30368792](#), WoS [000449491800002](#) Cristin [1686648 \(Details\)](#)

[Juvodden HT](#), [Alnæs D](#), Lund MJ, [Agartz I](#), [Andreassen OA](#), Dietrichs E, [Thorsby PM](#), [Westlye LT](#), [Knudsen S](#) (2018)
Widespread white matter changes in post-H1N1 patients with narcolepsy type 1 and first-degree relatives
Sleep, 41 (10)
DOI [10.1093/sleep/zsy145](#), PubMed [30016530](#), WoS [000448174000015](#) Cristin [1630398 \(Details\)](#)

[Schistad EI](#), Bjorland S, [Røe C](#), [Gjerstad J](#), Vetti N, [Myhre K](#), Espeland A (2018)
Five-year development of lumbar disc degeneration-a prospective study
Skeletal Radiol, 48 (6), 871-879
DOI [10.1007/s00256-018-3062-x](#), PubMed [30255192](#) Cristin [1614985 \(Details\)](#)

Berge-Seidl V, [Pihlstrøm L](#), Wszolek ZK, Ross OA, [Toft M](#) (2018)
No evidence for DNMT3 as genetic modifier of age at onset in idiopathic Parkinson's disease
Neurobiol Aging, 74, 236.e1-236.e5
DOI [10.1016/j.neurobiolaging.2018.09.022](#), PubMed [30340792](#), WoS [000455193900027](#) Cristin [1631702 \(Details\)](#)

[Page CM](#), [Vos L](#), [Rounge TB](#), [Harbo HF](#), [Andreassen BK](#) (2018)
Assessing genome-wide significance for the detection of differentially methylated regions
Stat Appl Genet Mol Biol, 17 (5)
DOI [10.1515/sagmb-2017-0050](#), PubMed [30231014](#), WoS [000448422700001](#) Cristin [1623694 \(Details\)](#)

[Ørstavik K](#), [Rasmussen M](#), Arntzen KA, Bindoff LA (2018)
Økt behov for fysioterapeuter med nevrologisk kompetanse
Tidsskr Nor Laegeforen, 138 (14)
DOI [10.4045/tidsskr.18.0580](#), PubMed [30234257 \(Details\)](#)

[Magelssen M](#), [Holmøy T](#), Horn MA, Fondenæs OA, Dybvik K, Førde R (2018)
Ethical challenges in tracheostomy-assisted ventilation in amyotrophic lateral sclerosis
J Neurol, 265 (11), 2730-2736
DOI [10.1007/s00415-018-9054-x](#), PubMed [30218178](#), WoS [000448450200026](#) Cristin [1618204 \(Details\)](#)

[Drange OK](#), Vaaler AE, Morken G, [Andreassen OA](#), [Malt UF](#), Finseth PI (2018)
Clinical characteristics of patients with bipolar disorder and premorbid traumatic brain injury: a cross-sectional study
Int J Bipolar Disord, 6 (1), 19
DOI [10.1186/s40345-018-0128-6](#), PubMed [30198055](#), WoS [000444788800001](#) Cristin [1608255 \(Details\)](#)

[Heuch I](#), [Storheim K](#) (2018)
Critically appraised paper: Workplace physical exercise reduces musculoskeletal pain among healthcare workers more than home-based exercise [commentary]
J Physiother, 64 (4), 265
DOI [10.1016/j.jphys.2018.06.002](#), PubMed [30213579](#), WoS [000445803600012 \(Details\)](#)





[Lindland ES](#), Solheim AM, Andreassen S, [Quist-Paulsen E](#), Eikeland R, Ljøstad U, [Mygland Å](#), [Elsais A](#), Nygaard GO, [Lorentzen ÅR](#), Harbo HF, [Beyer MK](#) (2018)

Imaging in Lyme neuroborreliosis

Insights Imaging, 9 (5), 833-844

DOI [10.1007/s13244-018-0646-x](#), PubMed [30187265](#), WoS [000448802900017](#) Cristin [1637814](#) ([Details](#))

Saetrand T, [Bjørk IT](#), [Capjon H](#), Rasmussen M (2018)

Parent-child communication and timing of interventions are challenges in the Duchenne muscular dystrophy care
Acta Paediatr, 108 (3), 535-540

DOI [10.1111/apa.14537](#), PubMed [30118557](#), WoS [000458391200024](#) Cristin [1627132](#) ([Details](#))

Latysheva A, Eeg Emblem K, [Server A](#), [Brandal P](#), [Melting TR](#), [Pahnke J](#), [Hald JK](#) (2018)

Survival Associations Using Perfusion and Diffusion Magnetic Resonance Imaging in Patients With Histologic and Genetic Defined Diffuse Glioma World Health Organization Grades II and III

J Comput Assist Tomogr, 42 (5), 807-815

DOI [10.1097/RCT.0000000000000742](#), PubMed [29901512](#), WoS [000445630100023](#) Cristin [1625836](#) ([Details](#))

[Panagopoulos I](#), [Gorunova L](#), Leske H, Niehusmann P, [Johannessen LE](#), Staurseth J, Øino N, [Melting TR](#), [Heim S](#), [Micci F](#), [Brandal P](#) (2018)

Pyrosequencing Analysis of *MGMT* Promoter Methylation in Meningioma

Cancer Genomics Proteomics, 15 (5), 379-385

DOI [10.21873/cgp.20096](#), PubMed [30194078](#), WoS [000444004800003](#) Cristin [1626377](#) ([Details](#))

Nunes A, Schnack HG, Ching CRK, [Agartz J](#), Akudjedu TN, Alda M, [Alnæs D](#), Alonso-Lana S, Bauer J, Baune BT, [Bøen E](#), Bonnin CDM, Busatto GF, Canales-Rodríguez EJ, Cannon DM, Caseras X, Chaim-Avancini TM, Dannlowski U, Díaz-Zuluaga AM, Dietsche B, Doan NT, Duchesnay E, [Elvsåshagen T](#), Emden D, Eyler LT et al. (2018)

Using structural MRI to identify bipolar disorders - 13 site machine learning study in 3020 individuals from the ENIGMA Bipolar Disorders Working Group

Mol Psychiatry (in press)

DOI [10.1038/s41380-018-0228-9](#), PubMed [30171211](#) Cristin [1620792](#) ([Details](#))

Riazuddin S, Hussain M, Razzaq A, Iqbal Z, Shahzad M, Polla DL, Song Y, van Beusekom E, Khan AA, Tomas-Roca L, Rashid M, Zahoor MY, Wissink-Lindhout WM, Basra MAR, Ansar M, Agha Z, van Heeswijk K, Rasheed F, Van de Vorst M, Veltman JA, Gilissen C, Akram J, Kleefstra T, Assir MZ, UK10K et al. (2018)

Correction: Exome sequencing of Pakistani consanguineous families identifies 30 novel candidate genes for recessive intellectual disability

Mol Psychiatry (in press)

DOI [10.1038/s41380-018-0128-z](#), PubMed [30171209](#) ([Details](#))

Håvik AL, Bruland O, Aarhus M, Kalland KH, [Stokowy T](#), Lund-Johansen M, Knappskog PM (2018)

Screening for viral nucleic acids in vestibular schwannoma

J Neurovirol, 24 (6), 730-737

DOI [10.1007/s13365-018-0669-6](#), PubMed [30168016](#), WoS [000452064200008](#) Cristin [1618328](#) ([Details](#))





- Da Broi M, Jahr G, [Beiske K](#), [Holte H](#), [Meling TR](#) (2018)
Efficacy of the Nordic and the MSKCC chemotherapy protocols on the overall and progression-free survival in intracranial PCNSL
Blood Cells Mol Dis, 73, 25-32
DOI [10.1016/j.bcmd.2018.08.005](https://doi.org/10.1016/j.bcmd.2018.08.005), PubMed [30217760](https://pubmed.ncbi.nlm.nih.gov/30217760/), WoS [000445530600005](https://www.scopus.com/search/form.do?prf=full&query=000445530600005) Cristin [1629061](https://www.cristin.no/record/1629061) ([Details](#))
- González A, [Aurlien D](#), [Larsson PG](#), [Olsen KB](#), [Dahl IT](#), [Edvardsen T](#), [Haugaa KH](#), [Taubøll E](#) (2018)
Seizure-like episodes and EEG abnormalities in patients with long QT syndrome
Seizure, 61, 214-220
DOI [10.1016/j.seizure.2018.08.020](https://doi.org/10.1016/j.seizure.2018.08.020), PubMed [30218808](https://pubmed.ncbi.nlm.nih.gov/30218808/), WoS [000447477500037](https://www.scopus.com/search/form.do?prf=full&query=000447477500037) Cristin [1625986](https://www.cristin.no/record/1625986) ([Details](#))
- [Hassel B](#), [Mariussen E](#), [Idland AV](#), [Dahl GT](#), [Ræder J](#), [Frihagen F](#), [Berg JP](#), [Chaudhry FA](#), [Wyller TB](#), [Watne LO](#) (2018)
CSF sodium at toxic levels precedes delirium in hip fracture patients
Neurotoxicology, 69, 11-16
DOI [10.1016/j.neuro.2018.08.010](https://doi.org/10.1016/j.neuro.2018.08.010), PubMed [30149051](https://pubmed.ncbi.nlm.nih.gov/30149051/), WoS [000451106200002](https://www.scopus.com/search/form.do?prf=full&query=000451106200002) Cristin [1626113](https://www.cristin.no/record/1626113) ([Details](#))
- [Celius EG](#) (2018)
Teaching has a low status within academia
Tidsskr. Nor. Laegeforen., 138 (12), 1155
WoS [000443131400027](https://www.scopus.com/search/form.do?prf=full&query=000443131400027) ([Details](#))
- [Engdahl E](#), [Niehusmann P](#), [Fogdell-Hahn A](#) (2018)
The effect of human herpesvirus 6B infection on the MAPK pathway
Virus Res, 256, 134-141
DOI [10.1016/j.virusres.2018.08.014](https://doi.org/10.1016/j.virusres.2018.08.014), PubMed [30130603](https://pubmed.ncbi.nlm.nih.gov/30130603/), WoS [000447111800017](https://www.scopus.com/search/form.do?prf=full&query=000447111800017) Cristin [1623846](https://www.cristin.no/record/1623846) ([Details](#))
- [Hosainey SAM](#), [Lassen B](#), [Hald JK](#), [Helseth E](#), [Meling TR](#) (2018)
The effect of tumor removal via craniotomies on preoperative hydrocephalus in adult patients with intracranial tumors
Neurosurg Rev (in press)
DOI [10.1007/s10143-018-1021-6](https://doi.org/10.1007/s10143-018-1021-6), PubMed [30120611](https://pubmed.ncbi.nlm.nih.gov/30120611/) Cristin [1620874](https://www.cristin.no/record/1620874) ([Details](#))
- [Kristoffersen ES](#), [Aaseth K](#), [Grande RB](#), [Lundqvist C](#), [Russell MB](#) (2018)
Psychological distress, neuroticism and disability associated with secondary chronic headache in the general population - the Akershus study of chronic headache
J Headache Pain, 19 (1), 62
DOI [10.1186/s10194-018-0894-7](https://doi.org/10.1186/s10194-018-0894-7), PubMed [30116914](https://pubmed.ncbi.nlm.nih.gov/30116914/), WoS [000443071200001](https://www.scopus.com/search/form.do?prf=full&query=000443071200001) Cristin [1602386](https://www.cristin.no/record/1602386) ([Details](#))
- [Fjell AM](#), [Idland AV](#), [Sala-Llonch R](#), [Watne LO](#), [Borza T](#), [Brækhus A](#), [Lona T](#), [Zetterberg H](#), [Blennow K](#), [Wyller TB](#), [Walhovd KB](#) (2018)
Neuroinflammation and Tau Interact with Amyloid in Predicting Sleep Problems in Aging Independently of Atrophy
Cereb Cortex, 28 (8), 2775-2785
DOI [10.1093/cercor/bhx157](https://doi.org/10.1093/cercor/bhx157), PubMed [28655157](https://pubmed.ncbi.nlm.nih.gov/28655157/), WoS [000440966600009](https://www.scopus.com/search/form.do?prf=full&query=000440966600009) Cristin [1482063](https://www.cristin.no/record/1482063) ([Details](#))





Aulie VS, [Halvorsen VB](#), [Brox JI](#) (2018)

Motor abilities in 182 children treated for idiopathic clubfoot: a comparison between the traditional and the Ponseti method and controls

J Child Orthop, 12 (4), 383-389

DOI [10.1302/1863-2548.12.170195](#), PubMed [30154930](#), WoS [000440888900014](#) ([Details](#))

Jakobsson JE, Gronnevik G, Rafique W, Hartvig K, [Riss PJ](#) (2018)

Formamide as an Unconventional Amine Protecting Group for PET Radiochemistry

Eur. J. Org. Chem. (27-28), 3701-3704

DOI [10.1002/ejoc.201800554](#), WoS [000439775200015](#) Cristin [1625089](#) ([Details](#))

[Kleffelgaard I](#), [Soberg HL](#), [Tamber AL](#), [Bruusgaard KA](#), [Pripp AH](#), [Sandhaug M](#), [Langhammer B](#) (2018)

The effects of vestibular rehabilitation on dizziness and balance problems in patients after traumatic brain injury: a randomized controlled trial

Clin Rehabil, 33 (1), 74-84

DOI [10.1177/0269215518791274](#), PubMed [30056743](#), WoS [000454521300009](#) Cristin [1609004](#) ([Details](#))

Ulvin LB, [Heuser K](#), [Olsen KB](#), [Taubøll E](#) (2018)

Factors associated with refractoriness and outcome in an adult status epilepticus cohort

Seizure, 61, 111-118

DOI [10.1016/j.seizure.2018.07.020](#), PubMed [30125862](#), WoS [000447477500020](#) Cristin [1621553](#) ([Details](#))

[Lundar T](#), [Due-Tønnessen BJ](#), [Fric R](#), [Due-Tønnessen P](#) (2018)

Postoperative radiotherapy for pediatric brain tumor: a lesson learned from treatment of a 5-year-old girl for posterior fossa astrocytoma (WHO1) in 1967

Acta Neurochir (Wien), 160 (10), 2065-2066

DOI [10.1007/s00701-018-3636-3](#), PubMed [30046877](#), WoS [000444370600029](#) ([Details](#))

[Kleggetveit IP](#), [Jørum E](#) (2018)

Diagnosis of carpal tunnel syndrome

Scand J Pain, 18 (3), 333-337

DOI [10.1515/sjpain-2018-0089](#), PubMed [29894306](#), WoS [000439314200001](#) Cristin [1632576](#) ([Details](#))

Zhou Y, Dhaher R, Parent M, Hu QX, [Hassel B](#), Yee SP, Hyder F, Gruenbaum SE, Eid T, [Danbolt NC](#) (2018)

Selective deletion of glutamine synthetase in the mouse cerebral cortex induces glial dysfunction and vascular impairment that precede epilepsy and neurodegeneration

Neurochem Int, 123, 22-33

DOI [10.1016/j.neuint.2018.07.009](#), PubMed [30053506](#) Cristin [1626022](#) ([Details](#))

Bjørke AB, Nome CG, [Falk RS](#), [Gjerstad L](#), [Taubøll E](#), [Heuser K](#) (2018)

Evaluation of long-term antiepileptic drug use in patients with temporal lobe epilepsy: Assessment of risk factors for drug resistance and polypharmacy

Seizure, 61, 63-70

DOI [10.1016/j.seizure.2018.07.011](#), PubMed [30099235](#), WoS [000447477500012](#) Cristin [1628939](#) ([Details](#))





Saetre E, [Abdelnoor M](#) (2018)

Incidence rate of sudden death in epilepsy: A systematic review and meta-analysis

Epilepsy Behav, 86, 193-199

DOI [10.1016/j.yebeh.2018.06.037](#), PubMed [30017838](#), WoS [000442624500031](#) Cristin [1635727](#) ([Details](#))

[Ringstad G](#), Valnes LM, Dale AM, [Pripp AH](#), Vatnehol SS, [Emblem KE](#), Mardal KA, [Eide PK](#) (2018)

Brain-wide glymphatic enhancement and clearance in humans assessed with MRI

JCI Insight, 3 (13)

DOI [10.1172/jci.insight.121537](#), PubMed [29997300](#), WoS [000438547200009](#) Cristin [1591663](#) ([Details](#))

Rafique W, Kramer V, Pardo T, Smits R, Spilhaug MM, Hoeping A, Savio E, Engler H, Kuljs R, Amaral H, [Riss PJ](#) (2018)

Image-Guided Development of Heterocyclic Sulfoxides as Ligands for Tau Neurofibrillary Tangles: From First-in-Man to Second-Generation Ligands

ACS Omega, 3 (7), 7567-7579

DOI [10.1021/acsomega.8b00975](#), PubMed [30087917](#), WoS [000438908600046](#) Cristin [1628144](#) ([Details](#))

[Meling TR](#), Da Broi M, [Scheie D](#), [Helseth E](#) (2018)

Skull base versus non-skull base meningioma surgery in the elderly

Neurosurg Rev (in press)

DOI [10.1007/s10143-018-1005-6](#), PubMed [29978438](#) Cristin [1620416](#) ([Details](#))

[Larsen K](#), [Aasland A](#), [Diseth TH](#) (2018)

Identification of Symptoms of Autism Spectrum Disorders in the Second Year of Life at Day-Care Centres by Day-Care Staff: Step One in the Development of a Short Observation List

J Autism Dev Disord, 48 (7), 2267-2277

DOI [10.1007/s10803-018-3489-x](#), PubMed [29423606](#), WoS [000434993000001](#) Cristin [1592013](#) ([Details](#))

[Pihlstrøm L](#), Blauwendraat C, Cappelletti C, Berge-Seidl V, Langmyhr M, Henriksen SP, van de Berg WDJ, Gibbs JR, Cookson MR, International Parkinson Disease Genomics Consortium, North American Brain Expression Consortium, Singleton AB, Nalls MA, [Toft M](#) (2018)

A comprehensive analysis of SNCA-related genetic risk in sporadic parkinson disease

Ann Neurol, 84 (1), 117-129

DOI [10.1002/ana.25274](#), PubMed [30146727](#), WoS [000443302300011](#) Cristin [1614151](#) ([Details](#))

Fjellaksel R, Sundset R, [Riss PJ](#), Hansen JH (2018)

Copper-Mediated Late-Stage Iodination and I-123-Labeling of Triazole-benzimidazole Bioactives

Synlett, 29 (11), 1491-1495

DOI [10.1055/s-0036-1591985](#), WoS [000435602300015](#) Cristin [1584180](#) ([Details](#))

Molland RS, [Diep LM](#), [Brox JJ](#), [Stuge B](#), [Holm I](#), Kibsgard TJ (2018)

Reliability and Construct Validity of the Adapted Norwegian Version of the Early-Onset Scoliosis 24-item Questionnaire

J Am Acad Orthop Surg Glob Res Rev, 2 (7), e066

DOI [10.5435/JAAOSGlobal-D-17-00066](#), PubMed [30280146](#), WoS [000461098200008](#) ([Details](#))





Haugstad GK, [Kirste U](#), Leganger S, Haakonsen E, Haugstad TS (2018)
Somatocognitive therapy in the management of chronic gynaecological pain. A review of the historical background and results of a current approach
Scand J Pain, 2 (3), 124-129
DOI [10.1016/j.sjpain.2011.02.005](https://doi.org/10.1016/j.sjpain.2011.02.005), PubMed [29913743](https://pubmed.ncbi.nlm.nih.gov/29913743/) ([Details](#))

[Pihlstrøm L](#), Schottlaender L, Chelban V, MSA Exome Consortium, Meissner WG, Federoff M, Singleton A, Houlden H (2018)
Lysosomal storage disorder gene variants in multiple system atrophy
Brain, 141 (7), e53
DOI [10.1093/brain/awy124](https://doi.org/10.1093/brain/awy124), PubMed [29741613](https://pubmed.ncbi.nlm.nih.gov/29741613/), WoS [000438288100003](https://www.scopus.com/search/form.do?prf=1&query=000438288100003) ([Details](#))

Fjellaksel R, Dugalic D, Demissie TB, [Riss PJ](#), Hjelstuen OK, Sundset R, Hansen JH (2018)
An acylation-Finkelstein approach to radioiodination of bioactives: The role of amide group anchimeric assistance
J. Phys. Org. Chem., 31 (7), e3835
DOI [10.1002/poc.3835](https://doi.org/10.1002/poc.3835), WoS [000435277900004](https://www.scopus.com/search/form.do?prf=1&query=000435277900004) Cristin [1560383](https://www.cristin.no/urn:nbn:no:ctin:1560383) ([Details](#))

Jacobsena BA, [Dyb G](#), Hagen K, Stovner LJ, Holmen TL, [Zwart JA](#) (2018)
The Nord-Trøndelag Health Study shows increased prevalence of primary recurrent headaches among adolescents over a four-year period
Scand J Pain, 2 (3), 148-152
DOI [10.1016/j.sjpain.2011.03.002](https://doi.org/10.1016/j.sjpain.2011.03.002), PubMed [29913741](https://pubmed.ncbi.nlm.nih.gov/29913741/) ([Details](#))

Nordstrand SH, [Hansen BH](#), [Kamaleri Y](#), [Nielsen KB](#), [Rootwelt T](#), [Karlsen TI](#), [Knudsen S](#) (2018)
Changes in quality of life in individuals with narcolepsy type 1 after the H1N1-influenza epidemic and vaccination campaign in Norway: a two-year prospective cohort study
Sleep Med, 50, 175-180
DOI [10.1016/j.sleep.2018.05.037](https://doi.org/10.1016/j.sleep.2018.05.037), PubMed [30075393](https://pubmed.ncbi.nlm.nih.gov/30075393/), WoS [000444845100023](https://www.scopus.com/search/form.do?prf=1&query=000444845100023) Cristin [1618356](https://www.cristin.no/urn:nbn:no:ctin:1618356) ([Details](#))

[Fossmo HL](#), Holtebekk E, Giltvedt K, Dybesland AR, Sanaker PS, [Ørstavik K](#) (2018)
Physical exercise in adults with hereditary neuromuscular disease
Tidsskr Nor Laegeforen, 138 (11)
DOI [10.4045/tidsskr.17.1024](https://doi.org/10.4045/tidsskr.17.1024), PubMed [29947206](https://pubmed.ncbi.nlm.nih.gov/29947206/), WoS [000436491800025](https://www.scopus.com/search/form.do?prf=1&query=000436491800025) ([Details](#))

Værøy H, Adori C, Legrand R, Lucas N, Breton J, Cottard C, do Rego JC, Duparc C, Louiset E, Lefebvre H, Déchelotte P, [Western E](#), Andersson S, Hökfelt T, Fetissof SO (2018)
Autoantibodies reactive to adrenocorticotrophic hormone can alter cortisol secretion in both aggressive and nonaggressive humans
Proc Natl Acad Sci U S A, 115 (28), E6576-E6584
DOI [10.1073/pnas.1720008115](https://doi.org/10.1073/pnas.1720008115), PubMed [29941562](https://pubmed.ncbi.nlm.nih.gov/29941562/), WoS [000438050900024](https://www.scopus.com/search/form.do?prf=1&query=000438050900024) Cristin [1600466](https://www.cristin.no/urn:nbn:no:ctin:1600466) ([Details](#))

Brainstorm Consortium, Anttila V, Bulik-Sullivan B, Finucane HK, Walters RK, Bras J, Duncan L, Escott-Price V, Falcone GJ, Gormley P, Malik R, Patsopoulos NA, Ripke S, Wei Z, Yu D, Lee PH, Turley P, Grenier-Boley B, Chouraki V, Kamatani Y, Berr C, Letenneur L, Hannequin D, Amouyel P, Boland A et al. (2018)
Analysis of shared heritability in common disorders of the brain
Science, 360 (6395)
DOI [10.1126/science.aap8757](https://doi.org/10.1126/science.aap8757), PubMed [29930110](https://pubmed.ncbi.nlm.nih.gov/29930110/), WoS [000436040600034](https://www.scopus.com/search/form.do?prf=1&query=000436040600034) Cristin [1596902](https://www.cristin.no/urn:nbn:no:ctin:1596902) ([Details](#))





Hikmat O, Naess K, Engvall M, Klingenberg C, [Rasmussen M](#), [Tallaksen CME](#), Brodtkorb E, Fiskerstrand T, Isohanni P, Uusimaa J, Darin N, Rahman S, Bindoff LA (2018)

Elevated cerebrospinal fluid protein in POLG-related epilepsy: Diagnostic and prognostic implications
Epilepsia, 59 (8), 1595-1602

DOI [10.1111/epi.14459](#), PubMed [29920680](#), WoS [000445272100015](#) Cristin [1604291 \(Details\)](#)

Kular L, Liu Y, Ruhrmann S, Zheleznyakova G, Marabita F, Gomez-Cabrero D, James T, Ewing E, Lindén M, Górnikiewicz B, Aeinehband S, Stridh P, Link J, Andlauer TFM, Gasperi C, Wiendl H, Zipp F, Gold R, Tackenberg B, Weber F, Hemmer B, Strauch K, Heilmann-Heimbach S, Rawal R, Schminke U et al. (2018)

DNA methylation as a mediator of HLA-DRB1*15:01 and a protective variant in multiple sclerosis
Nat Commun, 9 (1), 2397

DOI [10.1038/s41467-018-04732-5](#), PubMed [29921915](#), WoS [000435538500015](#) Cristin [1601287 \(Details\)](#)

Tverdal CB, Howe EI, [Røe C](#), [Helseth E](#), Lu J, Tenovuo O, [Andelic N](#) (2018)

Traumatic brain injury: Patient experience and satisfaction with discharge from trauma hospital
J Rehabil Med, 50 (6), 505-513

DOI [10.2340/16501977-2332](#), PubMed [29620136](#), WoS [000437194300004](#) Cristin [1610749 \(Details\)](#)

Holtedahl R, [Brox JI](#), Aune AK, Nguyen D, [Risberg MA](#), Tjomsland O (2018)

Changes in the rate of publicly financed knee arthroscopies: an analysis of data from the Norwegian patient registry from 2012 to 2016

BMJ Open, 8 (6), e021199

DOI [10.1136/bmjopen-2017-021199](#), PubMed [29909370](#), WoS [000435567900077](#) Cristin [1616008 \(Details\)](#)

Diets IJ, [Prescott T](#), Champaigne NL, Mancini GMS, [Krossnes B](#), [Frič R](#), Kocsis K, Jongmans MCJ, Kleefstra T (2018)

A recurrent de novo missense pathogenic variant in SMARCB1 causes severe intellectual disability and choroid plexus hyperplasia with resultant hydrocephalus

Genet Med, 21 (3), 572-579

DOI [10.1038/s41436-018-0079-4](#), PubMed [29907796](#), WoS [000460274400012](#) Cristin [1595375 \(Details\)](#)

Kristoffersen ES, Grande RB, Aaseth K, Russell MB, [Lundqvist C](#) (2018)

Medication-overuse headache detoxification reduces headache disability - the Akershus study of chronic headache

Eur J Neurol, 25 (9), 1140-1147

DOI [10.1111/ene.13674](#), PubMed [29746011](#), WoS [000441240200013](#) Cristin [1602385 \(Details\)](#)

Arntzen KA, Høyer H, [Ørstavik K](#), [Tallaksen C](#), Vedeler C, Østern R, Nebuchennykh M, Braathen GJ, Fagerheim T (2018)

Charcot-Marie-Tooth disease type 4C in Norway: Clinical characteristics, mutation spectrum and minimum prevalence

Neuromuscul Disord, 28 (8), 639-645

DOI [10.1016/j.nmd.2018.06.004](#), PubMed [30001926](#), WoS [000445982300003](#) Cristin [1604099 \(Details\)](#)

[Kverneland M](#), [Molteberg E](#), [Iversen PO](#), Veierød MB, [Taubøll E](#), [Selmer KK](#), [Nakken KO](#) (2018)

Effect of modified Atkins diet in adults with drug-resistant focal epilepsy: A randomized clinical trial

Epilepsia, 59 (8), 1567-1576

DOI [10.1111/epi.14457](#), PubMed [29901816](#), WoS [000445272100012](#) Cristin [1599744 \(Details\)](#)





Baud MO, Perneger T, Rácz A, Pensel MC, Elger C, Rydenhag B, Malmgren K, Cross JH, McKenna G, Tisdall M, Lamberink HJ, Rheims S, Ryvlin P, Isnard J, Mauguière F, Arzimanoglou A, Akkol S, Deniz K, Ozkara C, [Lossius M](#), Rektor I, Kälviäinen R, Vanhatalo LM, Dimova P, Minkin K et al. (2018)
European trends in epilepsy surgery
Neurology, 91 (2), e96-e106
DOI [10.1212/WNL.0000000000005776](#), PubMed [29898967](#), WoS [000439337300001](#) Cristin [1681103 \(Details\)](#)

[Johnsen MB](#), [Winsvold BS](#), [Børte S](#), Vie GÅ, Pedersen LM, [Storheim K](#), Skorpen F, Hagen K, Bjørngaard JH, Åsvold BO, [Zwart JA](#) (2018)
The causal role of smoking on the risk of headache. A Mendelian randomization analysis in the HUNT study
Eur J Neurol, 25 (9), 1148-e102
DOI [10.1111/ene.13675](#), PubMed [29747220](#), WoS [000441240200014](#) Cristin [1584758 \(Details\)](#)

[Andelic N](#), Howe EI, Hellstrøm T, Sanchez MF, Lu J, Løvstad M, [Røe C](#) (2018)
Disability and quality of life 20 years after traumatic brain injury
Brain Behav, 8 (7), e01018
DOI [10.1002/brb3.1018](#), PubMed [29888869](#), WoS [000438495400012](#) Cristin [1610741 \(Details\)](#)

Lu J, [Roe C](#), [Sigurdardottir S](#), [Andelic N](#), Forslund M (2018)
Trajectory of Functional Independent Measurements during First Five Years after Moderate and Severe Traumatic Brain Injury
J Neurotrauma, 35 (14), 1596-1603
DOI [10.1089/neu.2017.5299](#), PubMed [29466920](#), WoS [000434469700001](#) Cristin [1610751 \(Details\)](#)

[Skogen K](#), [Schulz A](#), [Helseth E](#), Ganeshan B, [Dormagen JB](#), [Server A](#) (2018)
Texture analysis on diffusion tensor imaging: discriminating glioblastoma from single brain metastasis
Acta Radiol, 60 (3), 356-366
DOI [10.1177/0284185118780889](#), PubMed [29860889](#), WoS [000458887800011](#) Cristin [1672165 \(Details\)](#)

Kambur O, Kaunisto MA, [Winsvold BS](#), Wilsgaard T, [Stubhaug A](#), [Zwart JA](#), Kalso E, Nielsen CS (2018)
Genetic variation in P2RX7 and pain tolerance
Pain, 159 (6), 1064-1073
DOI [10.1097/j.pain.0000000000001188](#), PubMed [29470314](#), WoS [000451222000010](#) Cristin [1597973 \(Details\)](#)

[Kleggetveit IP](#), Loseth S, [Orstavik K](#), Eichele T (2018)
Clinical neurophysiology on suspicion of botulism
Tidsskr. Nor. Laegeforen., 138 (9), 800
WoS [000433489100008 \(Details\)](#)

[Meling TR](#), Latysheva A, Da Broi M, Jahr G, [Holte H](#), [Beiske K](#), [Emblem KE](#) (2018)
Is deep brain involvement in intracranial primary central nervous system lymphoma of importance for penetration of chemotherapeutic agents?
Neuroradiology, 60 (7), 703-713
DOI [10.1007/s00234-018-2038-9](#), PubMed [29804159](#), WoS [000434968400005](#) Cristin [1597440 \(Details\)](#)





- Zak N, [Moberget T](#), [Bøen E](#), [Boye B](#), Waage TR, [Dietrichs E](#), Harkestad N, [Malt UF](#), [Westlye LT](#), [Andreassen OA](#), Andersson S, [Elvsåshagen T](#) (2018)
Longitudinal and cross-sectional investigations of long-term potentiation-like cortical plasticity in bipolar disorder type II and healthy individuals
Transl Psychiatry, 8 (1), 103
DOI [10.1038/s41398-018-0151-5](#), PubMed [29795193](#), WoS [000433503500001](#) Cristin [1593465](#) ([Details](#))
- Meessen J, [Sütterlin S](#), Gauggel S, Forkmann T (2018)
Learning by heart-the relationship between resting vagal tone and metacognitive judgments: a pilot study
Cogn Process, 19 (4), 557-561
DOI [10.1007/s10339-018-0865-6](#), PubMed [29796847](#), WoS [000446545400009](#) Cristin [1587134](#) ([Details](#))
- [Werner EL](#), [Løchting I](#), [Storheim K](#), [Grotle M](#) (2018)
A focus group study to understand biases and confounders in a cluster randomized controlled trial on low back pain in primary care in Norway
BMC Fam Pract, 19 (1), 71
DOI [10.1186/s12875-018-0759-9](#), PubMed [29788920](#), WoS [000433243200003](#) Cristin [1599875](#) ([Details](#))
- [Aaberg KM](#), [Bakken IJ](#), [Lossius MI](#), [Lund Søråas C](#), [Tallur KK](#), [Stoltenberg C](#), [Chin R](#), [Surén P](#) (2018)
Short-term Seizure Outcomes in Childhood Epilepsy
Pediatrics, 141 (6)
DOI [10.1542/peds.2017-4016](#), PubMed [29789444](#), WoS [000437406200032](#) Cristin [1593412](#) ([Details](#))
- [Skogseid IM](#), [Røsby O](#), [Konglund A](#), [Connelly JP](#), [Nedregard B](#), [Jablonski GE](#), [Kvernmo N](#), [Stray-Pedersen A](#), [Glover JC](#) (2018)
Dystonia-deafness syndrome caused by ACTB p.Arg183Trp heterozygosity shows striatal dopaminergic dysfunction and response to pallidal stimulation
J Neurodev Disord, 10 (1), 17
DOI [10.1186/s11689-018-9235-z](#), PubMed [29788902](#), WoS [000432734200001](#) Cristin [1598326](#) ([Details](#))
- Enger M, [Skjaker SA](#), [Melhuus K](#), [Nordsletten L](#), [Pripp AH](#), [Moosmayer S](#), [Brox JI](#) (2018)
Shoulder injuries from birth to old age: A 1-year prospective study of 3031 shoulder injuries in an urban population
Injury, 49 (7), 1324-1329
DOI [10.1016/j.injury.2018.05.013](#), PubMed [29861311](#), WoS [000437364200014](#) Cristin [1592813](#) ([Details](#))
- [Mughal AA](#), [Zhang L](#), [Fayzullin A](#), [Server A](#), [Li Y](#), [Wu Y](#), [Glass R](#), [Meling T](#), [Langmoen IA](#), [Leergaard TB](#), [Vik-Mo EO](#) (2018)
Patterns of Invasive Growth in Malignant Gliomas-The Hippocampus Emerges as an Invasion-Spared Brain Region
Neoplasia, 20 (7), 643-656
DOI [10.1016/j.neo.2018.04.001](#), PubMed [29793116](#), WoS [000436235300001](#) Cristin [1598239](#) ([Details](#))
- [Miall RC](#), [Kitchen NM](#), [Nam SH](#), [Lefumat H](#), [Renault AG](#), [Ørstavik K](#), [Cole JD](#), [Sarlegna FR](#) (2018)
Proprioceptive loss and the perception, control and learning of arm movements in humans: evidence from sensory neuronopathy
Exp Brain Res, 236 (8), 2137-2155
DOI [10.1007/s00221-018-5289-0](#), PubMed [29779050](#), WoS [000438422300001](#) Cristin [1669091](#) ([Details](#))





Eide PK, Vatnehol SAS, [Emblem KE](#), [Ringstad G](#) (2018)

Magnetic resonance imaging provides evidence of glymphatic drainage from human brain to cervical lymph nodes
Sci Rep, 8 (1), 7194

DOI [10.1038/s41598-018-25666-4](#), PubMed [29740121](#), WoS [000431625400007](#) Cristin [1597519](#) ([Details](#))

Sjaastad O, Blau N, Rydning SL, Peters V, [Rødningen O](#), Stray-Pedersen A, [Krossnes B](#), [Tallaksen C](#), [Koht J](#) (2018)
Homocarnosinosis: A historical update and findings in the SPG11 gene

Acta Neurol Scand, 138 (3), 245-250

DOI [10.1111/ane.12949](#), PubMed [29732542](#), WoS [000441125000008](#) Cristin [1628670](#) ([Details](#))

Reimers A, Helde G, Becser Andersen N, [Aurlien D](#), Surlien Navjord E, Haggag K, Christensen J, Lillestølen KM, [Nakken KO](#), Brodtkorb E (2018)

Zonisamide serum concentrations during pregnancy

Epilepsy Res, 144, 25-29

DOI [10.1016/j.epilepsyres.2018.05.002](#), PubMed [29751353](#), WoS [000435622900005](#) Cristin [1594211](#) ([Details](#))

[Sandset EC](#), Sanossian N, Woodhouse LJ, Anderson C, [Berge E](#), Lees KR, Potter JF, Robinson TG, Sprigg N, Wardlaw JM, Bath PM, Blood pressure in Acute Stroke Collaboration Investigators (2018)

Protocol for a prospective collaborative systematic review and meta-analysis of individual patient data from randomized controlled trials of vasoactive drugs in acute stroke: The Blood pressure in Acute Stroke Collaboration, stage-3

Int J Stroke, 13 (7), 759-765

DOI [10.1177/1747493018772733](#), PubMed [29720045](#), WoS [000446484400014](#) Cristin [1634702](#) ([Details](#))

Bjerknes S, [Toft M](#), Konglund AE, Pham U, Waage TR, Pedersen L, [Skjelland M](#), [Haraldsen I](#), Andersson S, [Dietrichs E](#), [Skogseid IM](#) (2018)

Multiple Microelectrode Recordings in STN-DBS Surgery for Parkinson's Disease: A Randomized Study
Mov Disord Clin Pract, 5 (3), 296-305

DOI [10.1002/mdc3.12621](#), PubMed [30009214](#), WoS [000435280300009](#) Cristin [1600490](#) ([Details](#))

Coutelier M, Hammer MB, Stevanin G, Monin ML, Davoine CS, Mochel F, Labauge P, Ewencyk C, Ding J, Gibbs JR, Hannequin D, Melki J, Toutain A, Laugel V, Forlani S, Charles P, Broussolle E, Thobois S, Afenjar A, Anheim M, Calvas P, Castelnovo G, de Broucker T, Vidailhet M, Moulignier A et al. (2018)

Efficacy of Exome-Targeted Capture Sequencing to Detect Mutations in Known Cerebellar Ataxia Genes
JAMA Neurol, 75 (5), 591-599

DOI [10.1001/jamaneurol.2017.5121](#), PubMed [29482223](#), WoS [000432316000013](#) ([Details](#))

Perin A, Prada FU, Moraldo M, Schiappacasse A, Galbiati TF, Gambatesa E, d'Orio P, Riker NI, Basso C, Santoro M, [Meling TR](#), Schaller K, DiMeco F (2018)

USim: A New Device and App for Case-Specific, Intraoperative Ultrasound Simulation and Rehearsal in Neurosurgery. A Preliminary Study

Oper Neurosurg (Hagerstown), 14 (5), 572-578

DOI [10.1093/ons/opx144](#), PubMed [29106668](#), WoS [000449370400029](#) ([Details](#))





- Lundborg M, Helseth E, Josefsen R, Braathen M, [Skogen K](#), Ramm-Pettersen J (2018)
Hyperbaric oxygen therapy of air embolus in the cerebral venous sinuses after intracranial surgery: a case report
Acta Neurochir (Wien), 160 (7), 1401-1405
DOI [10.1007/s00701-018-3537-5](#), PubMed [29696503](#), WoS [000434978600015](#) Cristin [1672183](#) ([Details](#))
- Svensson E, Nyström B, Goldie I, Landrø NI, Sidén Å, Staff P, Schillberg B, Taube A (2018)
Superior outcomes following cervical fusion vs. multimodal rehabilitation in a subgroup of randomized Whiplash-Associated-Disorders (WAD) patients indicating somatic pain origin-Comparison of outcome assessments made by four examiners from different disciplines
Scand J Pain, 18 (2), 175-186
DOI [10.1515/sjpain-2017-0180](#), PubMed [29794310](#), WoS [000431225000004](#) ([Details](#))
- Kaarbø MB, Haugstad GK, [Stubhaug A](#), [Wojniusz S](#) (2018)
The Standardised Mensendieck Test as a tool for evaluation of movement quality in patients with nonspecific chronic low back pain
Scand J Pain, 18 (2), 203-210
DOI [10.1515/sjpain-2018-0028](#), PubMed [29794292](#), WoS [000431225000007](#) Cristin [1584315](#) ([Details](#))
- Falkenberg-Jensen B, [Heimdal KR](#), [Høgevoid HE](#), Jablonski GE, [Due-Tønnessen BJ](#), [Hopp E](#) (2018)
Abnormally wide eustachian tubes involving the sphenoid bone: A collection
Laryngoscope Investig Otolaryngol, 3 (3), 214-217
DOI [10.1002/lio2.158](#), PubMed [30062137](#), WoS [000439813600010](#) Cristin [1679528](#) ([Details](#))
- [Haugstad GK](#), [Wojniusz S](#), Kirste UM, Kirschner RS, Lilleheie I, Haugstad TS (2018)
Pain, psychological distress and motor pattern in women with provoked vestibulodynia (PVD) - symptom characteristics and therapy suggestions
Scand J Pain, 18 (2), 221-227
DOI [10.1515/sjpain-2017-0173](#), PubMed [29794291](#), WoS [000431225000009](#) Cristin [1584321](#) ([Details](#))
- Lundar T, [Due-Tønnessen BJ](#), [Fric R](#), [Egge A](#), [Krossnes B](#), [Due-Tønnessen P](#), [Stensvold E](#), [Brandal P](#) (2018)
Neurosurgical treatment of gangliogliomas in children and adolescents: long-term follow-up of a single-institution series of 32 patients
Acta Neurochir (Wien), 160 (6), 1207-1214
DOI [10.1007/s00701-018-3550-8](#), PubMed [29680921](#), WoS [000431942900015](#) Cristin [1598332](#) ([Details](#))
- [Sigurdardottir S](#), [Andelic N](#), Wehling E, Anke A, Skandsen T, Holthe OO, Manskow US, [Roe C](#) (2018)
Return to work after severe traumatic brain injury: a national study with a one-year follow-up of neurocognitive and behavioural outcomes
Neuropsychol Rehabil, 1-17 (in press)
DOI [10.1080/09602011.2018.1462719](#), PubMed [29667477](#) Cristin [1589479](#) ([Details](#))
- Hessen E, [Alfstad KÅ](#), [Torgersen H](#), [Lossius MI](#) (2018)
Tested and reported executive problems in children and youth epilepsy
Brain Behav, 8 (5), e00971
DOI [10.1002/brb3.971](#), PubMed [29761020](#), WoS [000431970500019](#) Cristin [1595117](#) ([Details](#))





Rydning SL, Dudsek A, Rimmele F, Funke C, Krüger S, Biskup S, [Vigeland MD](#), Hjorthaug HS, [Sejersted Y](#), Tallaksen C, [Selmer KK](#), Kamm C (2018)

A novel heterozygous variant in ERLIN2 causes autosomal dominant pure hereditary spastic paraplegia
Eur J Neurol, 25 (7), 943-e71

DOI [10.1111/ene.13625](#), PubMed [29528531](#), WoS [000435444000009](#) Cristin [1599878](#) ([Details](#))

Rennie L, Löfgren N, Moe-Nilssen R, Opheim A, [Dietrichs E](#), Franzén E (2018)

The reliability of gait variability measures for individuals with Parkinson's disease and healthy older adults - The effect of gait speed

Gait Posture, 62, 505-509

DOI [10.1016/j.gaitpost.2018.04.011](#), PubMed [29679922](#), WoS [000432840100076](#) Cristin [1587402](#) ([Details](#))

Hagen K, Kristoffersen ES, [Winsvold BS](#), Stovner LJ, [Zwart JA](#) (2018)

Remission of chronic headache: An 11-year follow-up study. Data from the Nord-Trøndelag Health Surveys 1995-1997 and 2006-2008

Cephalalgia, 38 (14), 2026-2034

DOI [10.1177/0333102418769940](#), PubMed [29629599](#), WoS [000452333900005](#) Cristin [1578221](#) ([Details](#))

[Meling TR](#), Da Broi M, [Scheie D](#), [Helseth E](#) (2018)

Meningiomas: skull base versus non-skull base

Neurosurg Rev, 42 (1), 163-173

DOI [10.1007/s10143-018-0976-7](#), PubMed [29627874](#), WoS [000459818200019](#) Cristin [1593332](#) ([Details](#))

[Celius EG](#), Vila C (2018)

The influence of THC:CBD oromucosal spray on driving ability in patients with multiple sclerosis-related spasticity
Brain Behav, 8 (5), e00962

DOI [10.1002/brb3.962](#), PubMed [29761015](#), WoS [000431970500014](#) Cristin [1597854](#) ([Details](#))

[Larsen K](#), [Aasland A](#), [Diseth TH](#) (2018)

Brief Report: Agreement Between Parents and Day-Care Professionals on Early Symptoms Associated with Autism Spectrum Disorders

J Autism Dev Disord, 48 (4), 1063-1068

DOI [10.1007/s10803-017-3355-2](#), PubMed [29086212](#), WoS [000427986300010](#) Cristin [1528049](#) ([Details](#))

Njølstad BW, Mengshoel AM, [Sveen U](#) (2018)

'It's like being a slave to your own body in a way': a qualitative study of adolescents with chronic fatigue syndrome

Scand J Occup Ther, 26 (7), 505-514

DOI [10.1080/11038128.2018.1455895](#), PubMed [29607759](#), WoS [000466812000004](#) Cristin [1577894](#) ([Details](#))

Kam JWY, [Solbakk AK](#), Endestad T, [Meling TR](#), Knight RT (2018)

Lateral prefrontal cortex lesion impairs regulation of internally and externally directed attention

Neuroimage, 175, 91-99

DOI [10.1016/j.neuroimage.2018.03.063](#), PubMed [29604457](#), WoS [000432949000009](#) Cristin [1595584](#) ([Details](#))





Alluri SR, Riss PJ (2018)

Stereospecific radiosynthesis of 3-fluoro amino acids: access to enantiomerically pure radioligands for positron emission tomography

Org Biomol Chem, 16 (13), 2219-2224

DOI [10.1039/C8OB00184G](https://doi.org/10.1039/C8OB00184G), PubMed [29546903](https://pubmed.ncbi.nlm.nih.gov/29546903/), WoS [000428671200004](https://www.scopus.com/search/form.do?prq1=000428671200004) Cristin [1585263](https://www.cristin.no/urn:nbn:no:ctin:1585263) ([Details](#))

Hoseth EZ, Krull F, [Dieset I](#), Mørch RH, Hope S, Gardsjord ES, [Steen NE](#), [Melle I](#), Brattbakk HR, Steen VM, [Aukrust P](#), [Djurovic S](#), [Andreassen OA](#), [Ueland T](#) (2018)

Attenuated Notch signaling in schizophrenia and bipolar disorder

Sci Rep, 8 (1), 5349

DOI [10.1038/s41598-018-23703-w](https://doi.org/10.1038/s41598-018-23703-w), PubMed [29593239](https://pubmed.ncbi.nlm.nih.gov/29593239/), WoS [000428518900046](https://www.scopus.com/search/form.do?prq1=000428518900046) Cristin [1591465](https://www.cristin.no/urn:nbn:no:ctin:1591465) ([Details](#))

[Henning O](#), [Nakken KO](#), [Lossius MI](#) (2018)

People with epilepsy and their relatives want more information about risks of injuries and premature death

Epilepsy Behav, 82, 6-10

DOI [10.1016/j.yebeh.2018.02.023](https://doi.org/10.1016/j.yebeh.2018.02.023), PubMed [29574300](https://pubmed.ncbi.nlm.nih.gov/29574300/), WoS [000432591100002](https://www.scopus.com/search/form.do?prq1=000432591100002) Cristin [1680526](https://www.cristin.no/urn:nbn:no:ctin:1680526) ([Details](#))

Iversen JM, Uglem M, Indredavik MS, Romundstad PR, [Nilsen KB](#), Sand T, Rygg M (2018)

Pain Sensitivity and Thermal Detection Thresholds in Young Adults Born Preterm With Very Low Birth Weight or Small for Gestational Age at Term Compared With Controls

J Pain, 19 (8), 873-884

DOI [10.1016/j.jpain.2018.03.001](https://doi.org/10.1016/j.jpain.2018.03.001), PubMed [29574049](https://pubmed.ncbi.nlm.nih.gov/29574049/), WoS [000441226800005](https://www.scopus.com/search/form.do?prq1=000441226800005) Cristin [1595199](https://www.cristin.no/urn:nbn:no:ctin:1595199) ([Details](#))

[Dietrichs E](#) (2018)

Photo documentaries that make an impression

Tidsskr. Nor. Laegeforen., 138 (6), 585

WoS [000427958600038](https://www.scopus.com/search/form.do?prq1=000427958600038) ([Details](#))

[Evensen KB](#), O'Rourke M, Prieur F, [Holm S](#), [Eide PK](#) (2018)

Non-invasive Estimation of the Intracranial Pressure Waveform from the Central Arterial Blood Pressure Waveform in Idiopathic Normal Pressure Hydrocephalus Patients

Sci Rep, 8 (1), 4714

DOI [10.1038/s41598-018-23142-7](https://doi.org/10.1038/s41598-018-23142-7), PubMed [29549286](https://pubmed.ncbi.nlm.nih.gov/29549286/), WoS [000427588300015](https://www.scopus.com/search/form.do?prq1=000427588300015) Cristin [1577793](https://www.cristin.no/urn:nbn:no:ctin:1577793) ([Details](#))

Alluri SR, Riss PJ (2018)

Poly(ADP-ribose) Polymerase in Neurodegeneration: Radiosynthesis and Radioligand Binding in ARC-SWE tg Mice

ACS Chem Neurosci, 9 (6), 1259-1263

DOI [10.1021/acschemneuro.8b00053](https://doi.org/10.1021/acschemneuro.8b00053), PubMed [29544053](https://pubmed.ncbi.nlm.nih.gov/29544053/), WoS [000436211800007](https://www.scopus.com/search/form.do?prq1=000436211800007) Cristin [1585264](https://www.cristin.no/urn:nbn:no:ctin:1585264) ([Details](#))

Sowa P, [Harbo HF](#), White NS, [Celius EG](#), Bartsch H, [Berg-Hansen P](#), [Moen SM](#), [Bjørnerud A](#), [Westlye LT](#), [Andreassen OA](#), Dale AM, [Beyer MK](#) (2018)

Restriction spectrum imaging of white matter and its relation to neurological disability in multiple sclerosis

Mult Scler, 25 (5), 687-698

DOI [10.1177/1352458518765671](https://doi.org/10.1177/1352458518765671), PubMed [29542336](https://pubmed.ncbi.nlm.nih.gov/29542336/), WoS [000462663100010](https://www.scopus.com/search/form.do?prq1=000462663100010) Cristin [1667292](https://www.cristin.no/urn:nbn:no:ctin:1667292) ([Details](#))





- Zhou Y, Hassel B, Eid T, [Danbolt NC](#) (2018)
Axon-terminals expressing EAAT2 (GLT-1; Slc1a2) are common in the forebrain and not limited to the hippocampus
Neurochem Int, 123, 101-113
DOI [10.1016/j.neuint.2018.03.006](#), PubMed [29530756](#) Cristin [1598347 \(Details\)](#)
- Hagen K, Åsberg AN, Stovner L, Linde M, [Zwart JA](#), [Winsvold BS](#), [Heuch I](#) (2018)
Lifestyle factors and risk of migraine and tension-type headache. Follow-up data from the Nord-Trøndelag Health Surveys 1995-1997 and 2006-2008
Cephalalgia, 38 (13), 1919-1926
DOI [10.1177/0333102418764888](#), PubMed [29517305](#), WoS [000450358000004](#) Cristin [1574185 \(Details\)](#)
- [Juel NG](#), [Brox JI](#), [Hellund JC](#), [Merckoll E](#), Holte KB, [Berg TJ](#) (2018)
Radiological glenohumeral osteoarthritis in long-term type 1 diabetes. Prevalence and reliability of three classification systems. The Dialong shoulder study
Skeletal Radiol, 47 (9), 1245-1251
DOI [10.1007/s00256-018-2923-7](#), PubMed [29520537](#), WoS [000439741000007](#) Cristin [1598187 \(Details\)](#)
- [Henning O](#), [Ravatn TL](#), [Nakken KO](#) (2018)
Better information to patients with epilepsy
Tidsskr. Nor. Laegeforen., 138 (5), 430-431
WoS [000426995200012 \(Details\)](#)
- Hoseth EZ, Krull F, [Dieset I](#), [Mørch RH](#), [Hope S](#), [Gardsjord ES](#), [Steen NE](#), [Melle I](#), [Brattbakk HR](#), [Steen VM](#), [Aukrust P](#), [Djurovic S](#), [Andreassen OA](#), [Ueland T](#) (2018)
Exploring the Wnt signaling pathway in schizophrenia and bipolar disorder
Transl Psychiatry, 8 (1), 55
DOI [10.1038/s41398-018-0102-1](#), PubMed [29507296](#), WoS [000428350300001](#) Cristin [1590277 \(Details\)](#)
- Poless PG, Torstveit L, Lugo RG, [Andreassen M](#), [Sütterlin S](#) (2018)
Guilt and Proneness to Shame: Unethical Behaviour in Vulnerable and Grandiose Narcissism
Eur J Psychol, 14 (1), 28-43
DOI [10.5964/ejop.v14i1.1355](#), PubMed [29899796](#), WoS [000429478000003 \(Details\)](#)
- [Johnson EL](#), [Adams JN](#), [Solbakk AK](#), [Endestad T](#), [Larsson PG](#), [Ivanovic J](#), [Meling TR](#), [Lin JJ](#), [Knight RT](#) (2018)
Dynamic frontotemporal systems process space and time in working memory
PLoS Biol, 16 (3), e2004274
DOI [10.1371/journal.pbio.2004274](#), PubMed [29601574](#), WoS [000458621400003](#) Cristin [1592498 \(Details\)](#)
- [Chiarotto A](#), [Boers M](#), [Deyo RA](#), [Buchbinder R](#), [Corbin TP](#), [Costa LOP](#), [Foster NE](#), [Grotle M](#), [Koes BW](#), [Kovacs FM](#), [Lin CC](#), [Maher CG](#), [Pearson AM](#), [Peul WC](#), [Schoene ML](#), [Turk DC](#), [van Tulder MW](#), [Terwee CB](#), [Ostelo RW](#) (2018)
Core outcome measurement instruments for clinical trials in nonspecific low back pain
Pain, 159 (3), 481-495
DOI [10.1097/j.pain.0000000000001117](#), PubMed [29194127](#), WoS [000428999500011](#) Cristin [1686158 \(Details\)](#)





[Jørstad ØK](#), [Ødegaard EM](#), [Heimdal KR](#), [Kerty E](#) (2018)

Leber Hereditary Optic Neuropathy Caused by a Mitochondrial DNA 10663T>C Point Mutation and Its Response to Idebenone Treatment

J Neuroophthalmol, 38 (1), 129-131

DOI [10.1097/WNO.0000000000000598](#), PubMed [29210930](#), WoS [000432428800032](#) ([Details](#))

[Formo M](#), [Halvorsen CM](#), [Dahlberg D](#), [Brommeland T](#), [Fredø H](#), [Hald J](#), [Scheie D](#), [Langmoen IA](#), [Lied B](#), [Helseth E](#) (2018)

Minimally Invasive Microsurgical Resection of Primary, Intradural Spinal Tumors is Feasible and Safe: A Consecutive Series of 83 Patients

Neurosurgery, 82 (3), 365-371

DOI [10.1093/neuros/nyx253](#), PubMed [29992282](#), WoS [000439685800038](#) Cristin [1567286](#) ([Details](#))

[Bache KG](#), [Hov MR](#), [Larsen K](#), [Solyga VM](#), [Lund CG](#) (2018)

Prehospital Advanced Diagnostics and Treatment of Acute Stroke: Protocol for a Controlled Intervention Study JMIR Res Protoc, 7 (2), e53

DOI [10.2196/resprot.8110](#), PubMed [29490898](#), WoS [000432916000007](#) ([Details](#))

[Eide PK](#), [Ringstad G](#) (2018)

Delayed clearance of cerebrospinal fluid tracer from entorhinal cortex in idiopathic normal pressure hydrocephalus: A glymphatic magnetic resonance imaging study

J Cereb Blood Flow Metab, 271678X18760974 (in press)

DOI [10.1177/0271678X18760974](#), PubMed [29485341](#) Cristin [1662785](#) ([Details](#))

[Eidsvaag VA](#), [Hansson HA](#), [Heuser K](#), [Nagelhus EA](#), [Eide PK](#) (2018)

Cerebral microvascular abnormalities in patients with idiopathic intracranial hypertension

Brain Res, 1686, 72-82

DOI [10.1016/j.brainres.2018.02.017](#), PubMed [29477544](#), WoS [000429394400009](#) Cristin [1599647](#) ([Details](#))

[Bjørnara KA](#), [Pihlstrøm L](#), [Dietrichs E](#), [Toft M](#) (2018)

Risk variants of the α -synuclein locus and REM sleep behavior disorder in Parkinson's disease: a genetic association study

BMC Neurol, 18 (1), 20

DOI [10.1186/s12883-018-1023-6](#), PubMed [29466944](#), WoS [000426084100001](#) Cristin [1598161](#) ([Details](#))

[Winsvold BS](#), [Marvik A](#), [Zwart JA](#), [Aamodt AH](#) (2018)

Migraine and stroke

Tidsskr Nor Laegeforen, 138 (4)

DOI [10.4045/tidsskr.17.0347](#), PubMed [29460580](#), WoS [000425816100022](#) Cristin [1598369](#) ([Details](#))

[Morland C](#), [Frøland AS](#), [Pettersen MN](#), [Storm-Mathisen J](#), [Gundersen V](#), [Rise F](#), [Hassel B](#) (2018)

Propionate enters GABAergic neurons, inhibits GABA transaminase, causes GABA accumulation and lethargy in a model of propionic acidemia

Biochem J, 475 (4), 749-758

DOI [10.1042/BCJ20170814](#), PubMed [29339464](#), WoS [000428086400004](#) Cristin [1555674](#) ([Details](#))





Håberg SE, [Aaberg KM](#), Surén P, [Trogstad L](#), Ghaderi S, Stoltenberg C, Magnus P, Bakken IJ (2018)
Epilepsy in Children After Pandemic Influenza Vaccination

Pediatrics, 141 (3)

DOI [10.1542/peds.2017-0752](#), PubMed [29449342](#), WoS [000426361800012](#) Cristin [1590246 \(Details\)](#)

[Røe C](#), Kirkevold M, [Andelic N](#), [Soberg HL](#), [Sveen U](#), [Bautz-Holter E](#), [Jahnsen R](#), [van Walsem MR](#), Kildal Bragstad L, Gabrielsen Hjelle E, Klevberg G, Oretorp P, Habberstad A, Hagfors J, Væhle R, Engen G, Gutenbrunner C (2018)

The challenges of describing rehabilitation services: A discussion paper

J Rehabil Med, 50 (2), 151-158

DOI [10.2340/16501977-2299](#), PubMed [29260837](#), WoS [000425239300003](#) Cristin [1564951 \(Details\)](#)

[Cockerell I](#), Guenin M, [Heimdal K](#), [Bjørnvold M](#), [Selmer KK](#), Rouvière O (2018)

Renal manifestations of tuberous sclerosis complex: patients' and parents' knowledge and routines for renal follow-up - a questionnaire study

BMC Nephrol, 19 (1), 39

DOI [10.1186/s12882-018-0835-3](#), PubMed [29439672](#), WoS [000425165000003](#) Cristin [1598137 \(Details\)](#)

[Johannessen Landmark C](#), Farmen AH, [Burns ML](#), Baftiu A, [Lossius MI](#), [Johannessen SI](#), Tomson T (2018)

Pharmacokinetic variability of valproate during pregnancy - Implications for the use of therapeutic drug monitoring

Epilepsy Res, 141, 31-37

DOI [10.1016/j.epilepsyres.2018.02.004](#), PubMed [29453075](#), WoS [000430781700005](#) Cristin [1566338 \(Details\)](#)

Jahr G, Broi MD, [Holte H](#), [Beiske K](#), [Meling TR](#) (2018)

Evaluation of Memorial Sloan-Kettering Cancer Center and International Extranodal Lymphoma Study Group prognostic scoring systems to predict Overall Survival in intracranial Primary CNS lymphoma

Brain Behav, 8 (3), e00928

DOI [10.1002/brb3.928](#), PubMed [29541540](#), WoS [000426762600011](#) Cristin [1598660 \(Details\)](#)

Kam JWY, [Solbakk AK](#), Funderud I, Endestad T, [Meling TR](#), Knight RT (2018)

Orbitofrontal damage reduces auditory sensory response in humans

Cortex, 101, 309-312

DOI [10.1016/j.cortex.2017.12.023](#), PubMed [29455945](#), WoS [000430032400028 \(Details\)](#)

Dragesund T, Strand LI, [Grotle M](#) (2018)

The Revised Body Awareness Rating Questionnaire: Development Into a Unidimensional Scale Using Rasch Analysis

Phys Ther, 98 (2), 122-132

DOI [10.1093/ptj/pzx111](#), PubMed [29096009](#), WoS [000422877200006](#) Cristin [1570221 \(Details\)](#)

Jahr G, Da Broi M, [Holte H](#), [Beiske K](#), [Meling TR](#) (2018)

The role of surgery in intracranial PCNSL

Neurosurg Rev, 41 (4), 1037-1044

DOI [10.1007/s10143-018-0946-0](#), PubMed [29383600](#), WoS [000443572300015](#) Cristin [1593592 \(Details\)](#)





[Berg-Johnsen J, Høgestøl EA \(2018\)](#)

Supplementary motor area syndrome after surgery for parasagittal meningiomas

Acta Neurochir (Wien), 160 (3), 583-587

DOI [10.1007/s00701-018-3474-3](#), PubMed [29362933](#), WoS [000424650500021](#) Cristin [1553282 \(Details\)](#)

[Wang X, You S, Sato S, Yang J, Carcel C, Zheng D, Yoshimura S, Anderson CS, Sandset EC, Robinson T, Chalmers J, Sharma VK \(2018\)](#)

Current status of intravenous tissue plasminogen activator dosage for acute ischaemic stroke: an updated systematic review

Stroke Vasc Neurol, 3 (1), 28-33

DOI [10.1136/svn-2017-000112](#), PubMed [29600005](#) Cristin [1649707 \(Details\)](#)

[Stangeland H, Orgeta V, Bell V \(2018\)](#)

Poststroke psychosis: a systematic review

J Neurol Neurosurg Psychiatry, 89 (8), 879-885

DOI [10.1136/jnnp-2017-317327](#), PubMed [29332009](#), WoS [000442475000021](#) Cristin [1634689 \(Details\)](#)

[Skarpenland T, Skjelland M, Kong XY, Skagen K, Holm S, Otterdal K, Dahl CP, Krohg-Sørensen K, Sagen EL, Bjerkeli V, Aamodt AH, Abbas A, Gregersen I, Aukrust P, Halvorsen B, Dahl TB \(2018\)](#)

Increased Levels of Lectin-Like Oxidized Low-Density Lipoprotein Receptor-1 in Ischemic Stroke and Transient Ischemic Attack

J Am Heart Assoc, 7 (2)

DOI [10.1161/JAHA.117.006479](#), PubMed [29330254](#), WoS [000426642400011](#) Cristin [1517973 \(Details\)](#)

[Kobayashi A, Czlonkowska A, Ford GA, Fonseca AC, Luijckx GJ, Korv J, de la Ossa NP, Price C, Russell D, Tsiskaridze A, Messmer-Wullen M, De Keyser J \(2018\)](#)

European Academy of Neurology and European Stroke Organization consensus statement and practical guidance for pre-hospital management of stroke

Eur J Neurol, 25 (3), 425-433

DOI [10.1111/ene.13539](#), PubMed [29218822](#), WoS [000425631500006](#) Cristin [1654343 \(Details\)](#)

[Kvistad CE, Thomassen L, Aamodt AH, Logallo N \(2018\)](#)

Tenecteplase in acute ischemic stroke

Tidsskr. Nor. Laegeforen., 138 (1), 22-23

WoS [000424499400019 \(Details\)](#)

[Hasselberg NE, Berge KE, Rasmussen M, Früh A, Ørstavik K, Haugaa KH \(2018\)](#)

[Cardiomyopathy in hereditary muscular dystrophies]

Tidsskr Nor Laegeforen, 138 (1)

DOI [10.4045/tidsskr.16.0683](#), PubMed [29313627](#), WoS [000424499400031](#) Cristin [1598363 \(Details\)](#)

[Beniczky S, Conradsen I, Henning O, Fabricius M, Wolf P \(2018\)](#)

Automated real-time detection of tonic-clonic seizures using a wearable EMG device

Neurology, 90 (5), e428-e434

DOI [10.1212/WNL.0000000000004893](#), PubMed [29305441](#), WoS [000427799000010](#) Cristin [1640522 \(Details\)](#)





Hu QX, Ottestad-Hansen S, [Holmseth S](#), [Hassel B](#), [Danbolt NC](#), [Zhou Y](#) (2018)
Expression of Glutamate Transporters in Mouse Liver, Kidney, and Intestine
J Histochem Cytochem, 66 (3), 189-202
DOI [10.1369/0022155417749828](#), PubMed [29303644](#), WoS [000429873000004](#) Cristin [1555673 \(Details\)](#)

Reimers A, Berg JA, [Burns ML](#), Brodtkorb E, [Johannessen SI](#), [Johannessen Landmark C](#) (2018)
Reference ranges for antiepileptic drugs revisited: a practical approach to establish national guidelines
Drug Des Devel Ther, 12, 271-280
DOI [10.2147/DDDT.S154388](#), PubMed [29467570](#), WoS [000425327300001](#) Cristin [1563154 \(Details\)](#)

Bonsaksen T, [Sveen U](#), Dolva AS, Horghagen S, Thyness EM, Hagby C, Arntzen C (2018)
Perceived Influence on Service Goals Among Community-Working Occupational Therapists in Norway
J Prim Care Community Health, 9, 2150132718813491
DOI [10.1177/2150132718813491](#), PubMed [30465623](#), WoS [000451316400001](#) Cristin [1622445 \(Details\)](#)

Kolset SO, Nordstrøm M, Hope S, [Retterstøl K](#), [Iversen PO](#) (2018)
Securing rights and nutritional health for persons with intellectual disabilities - a pressing challenge
Food Nutr Res, 62
DOI [10.29219/fnr.v62.1268](#), PubMed [29899685](#), WoS [000436606100001 \(Details\)](#)

Åsberg AN, Hagen K, Stovner LJ, [Heuch I](#), [Zwart JA](#), [Winsvold BS](#) (2018)
Do incident musculoskeletal complaints influence mortality? The Nord-Trøndelag Health study
PLoS One, 13 (9), e0203925
DOI [10.1371/journal.pone.0203925](#), PubMed [30265708](#), WoS [000446005500013](#) Cristin [1617523 \(Details\)](#)

Eldholm RS, [Barca ML](#), [Persson K](#), [Knapskog AB](#), [Kersten H](#), [Engedal K](#), [Selbæk G](#), [Brækhus A](#), [Skovlund E](#), Saltvedt I (2018)
Progression of Alzheimer's Disease: A Longitudinal Study in Norwegian Memory Clinics
J Alzheimers Dis, 61 (3), 1221-1232
DOI [10.3233/JAD-170436](#), PubMed [29254085](#), WoS [000422845200033](#) Cristin [1533856 \(Details\)](#)

Odin P, Chaudhuri KR, Volkmann J, Antonini A, Storch A, [Dietrichs E](#), Pirtošek Z, Henriksen T, Horne M, Devos D, Bergquist F (2018)
Viewpoint and practical recommendations from a movement disorder specialist panel on objective measurement in the clinical management of Parkinson's disease
NPJ Parkinsons Dis, 4, 14
DOI [10.1038/s41531-018-0051-7](#), PubMed [29761156](#), WoS [000431802100001](#) Cristin [1614203 \(Details\)](#)

[Meling TR](#) (2018)
Adenosine-Assisted Clipping of Intracranial Aneurysms
Acta Neurochir Suppl, 129, 11-18
DOI [10.1007/978-3-319-73739-3_2](#), PubMed [30171308](#), WoS [000455755700002 \(Details\)](#)





van Walsem MR, Piira A, Mikalsen G, Fossmo HL, Howe EI, Knutsen SF, Frich JC (2018)
Cognitive Performance After a One-Year Multidisciplinary Intensive Rehabilitation Program for Huntington's Disease: An Observational Study
J Huntingtons Dis, 7 (4), 379-389
DOI [10.3233/JHD-180294](https://doi.org/10.3233/JHD-180294), PubMed [30320595](https://pubmed.ncbi.nlm.nih.gov/30320595/), WoS [000456401300009](https://www.scopus.com/search/form.do?prerender=true&query=000456401300009) Cristin [1617719](https://www.cristin.no/en/works/1617719) ([Details](#))

Jakobsson JE, Riss PJ (2018)
Transition metal free, late-stage, regiospecific, aromatic fluorination on a preparative scale using a KF/crypt-222 complex
RSC Adv., 8 (38), 21288-21291
DOI [10.1039/c8ra03757d](https://doi.org/10.1039/c8ra03757d), WoS [000435576500024](https://www.scopus.com/search/form.do?prerender=true&query=000435576500024) Cristin [1597818](https://www.cristin.no/en/works/1597818) ([Details](#))

Helkala K, Knox BJ, Josok O, Lugo RG, Sutterlin S, Dyrkolbotn GO, Svendsen NK (2018)
Supporting the Human in Cyber Defence
LECT NOTES COMPUT SC, 10683, 147-162
DOI [10.1007/978-3-319-72817-9_10](https://doi.org/10.1007/978-3-319-72817-9_10), WoS [000442073700010](https://www.scopus.com/search/form.do?prerender=true&query=000442073700010) Cristin [1543522](https://www.cristin.no/en/works/1543522) ([Details](#))

Hikmat O, Tzoulis C, Klingenberg C, Rasmussen M, Tallaksen CME, Brodtkorb E, Fiskerstrand T, McFarland R, Rahman S, Bindoff LA (2018)
Erratum to: The presence of anaemia negatively influences survival in patients with POLG disease
J Inherit Metab Dis, 41 (1), 153
DOI [10.1007/s10545-017-0092-9](https://doi.org/10.1007/s10545-017-0092-9), PubMed [28952135](https://pubmed.ncbi.nlm.nih.gov/28952135/), WoS [000423366500018](https://www.scopus.com/search/form.do?prerender=true&query=000423366500018) ([Details](#))

Akhmadeev K, Houssein A, Moussaoui S, Hogestol EA, Tuttunen I, Harbo HF, Bos-Haugen SD, Graves J, Laplaud DA, Gourraud PA (2018)
SVM-based Tool to Detect Patients with Multiple Sclerosis Using a Commercial EMG Sensor
PR IEEE SEN ARRAY, 376-379
WoS [000450082400077](https://www.scopus.com/search/form.do?prerender=true&query=000450082400077) ([Details](#))

González A, Aurlien D, Haugaa KH, Taubøll E (2018)
Epilepsy in patients with long QT syndrome type 1: A Norwegian family
Epilepsy Behav Case Rep, 10, 118-121
DOI [10.1016/j.ebcr.2018.09.006](https://doi.org/10.1016/j.ebcr.2018.09.006), PubMed [30406014](https://pubmed.ncbi.nlm.nih.gov/30406014/), WoS [000450142400029](https://www.scopus.com/search/form.do?prerender=true&query=000450142400029) Cristin [1646517](https://www.cristin.no/en/works/1646517) ([Details](#))

Katsifaraki M, Nilsen KB, Waersted M, Knardahl S, Lie JAS, Bjorvatn B, Harma M, Matre D (2018)
The association of sleepiness, insomnia, sleep disturbance and pain: a study amongst shiftworking nurses
Sleep Biol. Rhythms, 16 (1), 133-140
DOI [10.1007/s41105-017-0135-5](https://doi.org/10.1007/s41105-017-0135-5), WoS [000425888800016](https://www.scopus.com/search/form.do?prerender=true&query=000425888800016) Cristin [1520796](https://www.cristin.no/en/works/1520796) ([Details](#))

Krogsrud SK, Fjell AM, Tamnes CK, Grydeland H, Due-Tønnessen P, Bjørnerud A, Sampaio-Baptista C, Andersson J, Johansen-Berg H, Walhovd KB (2018)
Development of white matter microstructure in relation to verbal and visuospatial working memory-A longitudinal study
PLoS One, 13 (4), e0195540
DOI [10.1371/journal.pone.0195540](https://doi.org/10.1371/journal.pone.0195540), PubMed [29689058](https://pubmed.ncbi.nlm.nih.gov/29689058/), WoS [000430678800009](https://www.scopus.com/search/form.do?prerender=true&query=000430678800009) Cristin [1599323](https://www.cristin.no/en/works/1599323) ([Details](#))





- Ask TF, Lugo RG, [Sütterlin S](#) (2018)
The Neuro-Immuno-Senescence Integrative Model (NISIM) on the Negative Association Between Parasympathetic Activity and Cellular Senescence
Front Neurosci, 12, 726
DOI [10.3389/fnins.2018.00726](#), PubMed [30369866](#), WoS [000446840900001](#) Cristin [1612490](#) ([Details](#))
- Herlin C, Kjaer P, Espeland A, Skouen JS, Leboeuf-Yde C, Karppinen J, Niinimäki J, Sørensen JS, [Storheim K](#), Jensen TS (2018)
Modic changes-Their associations with low back pain and activity limitation: A systematic literature review and meta-analysis
PLoS One, 13 (8), e0200677
DOI [10.1371/journal.pone.0200677](#), PubMed [30067777](#), WoS [000440415500043](#) Cristin [1603549](#) ([Details](#))
- Juel BE, [Romundstad L](#), Kolstad F, [Storm JF](#), [Larsson PG](#) (2018)
Distinguishing Anesthetized from Awake State in Patients: A New Approach Using One Second Segments of Raw EEG
Front Hum Neurosci, 12, 40
DOI [10.3389/fnhum.2018.00040](#), PubMed [29515381](#), WoS [000425544400001](#) Cristin [1566930](#) ([Details](#))
- Rhead B, Brorson IS, Berge T, Adams C, Quach H, [Moen SM](#), [Berg-Hansen P](#), [Celius EG](#), Sangurdekar DP, Bronson PG, Lea RA, Burnard S, Maltby VE, Scott RJ, Lechner-Scott J, [Harbo HF](#), [Bos SD](#), Barcellos LF (2018)
Increased DNA methylation of SLFN12 in CD4+ and CD8+ T cells from multiple sclerosis patients
PLoS One, 13 (10), e0206511
DOI [10.1371/journal.pone.0206511](#), PubMed [30379917](#), WoS [000448823700124](#) Cristin [1644797](#) ([Details](#))
- [Kleffelgaard I](#), Langhammer B, [Sandhaug M](#), [Pripp AH](#), [Soberg HL](#) (2018)
Measurement properties of the modified and total Balance Error Scoring System - the BESS, in a healthy adult sample
Eur. J. Physiother., 20 (1), 25-31
DOI [10.1080/21679169.2017.1352020](#), WoS [000432136500005](#) Cristin [1484955](#) ([Details](#))
- Howe EI, [Andelic N](#), Perrin PB, [Røe C](#), [Sigurdardottir S](#), Arango-Lasprilla JC, Lu J, Løvstad M, Forslund MV (2018)
Employment Probability Trajectories Up To 10 Years After Moderate-To-Severe Traumatic Brain Injury
Front Neurol, 9, 1051
DOI [10.3389/fneur.2018.01051](#), PubMed [30568630](#), WoS [000452147400001](#) Cristin [1639571](#) ([Details](#))
- Knox BJ, Josok O, Helkala K, Khooshabeh P, Odegaard T, Lugo RG, [Sutterlin S](#) (2018)
Socio-technical communication: The hybrid space and the OLB model for science-based cyber education
Milit. Psychol., 30 (4), 350-359
DOI [10.1080/08995605.2018.1478546](#), WoS [000441994900006](#) Cristin [1576707](#) ([Details](#))
- [Hellevik AJ](#), [Johnsen MB](#), Langhammer A, Baste V, Furnes O, [Storheim K](#), [Zwart JA](#), [Flugsrud GB](#), [Nordsletten L](#) (2018)
Metabolic syndrome as a risk factor for total hip or knee replacement due to primary osteoarthritis: a prospective cohort study (the HUNT study and the Norwegian Arthroplasty Register)
Clin Epidemiol, 10, 83-96
DOI [10.2147/CLEP.S145823](#), PubMed [29391831](#), WoS [000422663400001](#) Cristin [1588476](#) ([Details](#))





Salvanos P, [Moe MC](#), [Utheim TP](#), [Bragadóttir R](#), [Kerty E](#) (2018)
ULTRA-WIDE-FIELD FUNDUS IMAGING IN THE DIAGNOSIS AND FOLLOW-UP OF SUSAC SYNDROME
Retin Cases Brief Rep, 12 (3), 234-239
DOI [10.1097/ICB.0000000000000470](https://doi.org/10.1097/ICB.0000000000000470), PubMed [27828899](#) ([Details](#))

Solberg OK, Filkuková P, [Frich JC](#), [Feragen KJB](#) (2018)
Age at Death and Causes of Death in Patients with Huntington Disease in Norway in 1986-2015
J Huntingtons Dis, 7 (1), 77-86
DOI [10.3233/JHD-170270](https://doi.org/10.3233/JHD-170270), PubMed [29480207](#), WoS [000426043100006](#) Cristin [1568483](#) ([Details](#))

Lindstrøm EK, [Ringstad G](#), Mardal KA, [Eide PK](#) (2018)
Cerebrospinal fluid volumetric net flow rate and direction in idiopathic normal pressure hydrocephalus
Neuroimage Clin, 20, 731-741
DOI [10.1016/j.nicl.2018.09.006](https://doi.org/10.1016/j.nicl.2018.09.006), PubMed [30238917](#), WoS [000450799000079](#) Cristin [1607786](#) ([Details](#))

[Heuch I](#), Heuch I, Hagen K, Sørgerd EP, Åsvold BO, [Zwart JA](#) (2018)
Is chronic low back pain a risk factor for diabetes? The Nord-Trøndelag Health Study
BMJ Open Diabetes Res Care, 6 (1), e000569
DOI [10.1136/bmjdr-2018-000569](https://doi.org/10.1136/bmjdr-2018-000569), PubMed [30397493](#) Cristin [1625214](#) ([Details](#))

